



# FETTE

## REPLACEMENT PARTS



NATOLI ENGINEERING COMPANY, INC.

TABLET PRESS  
**PARTS** CATALOG

*Can't Find Your Part?*

View our Parts and Accessories  
catalogs online  
[www.natoli.com](http://www.natoli.com)  
or call customer service:  
**636-926-8900**

# You Get More From a Natoli Part

Natoli Engineering Company, Inc., manufactures tablet press replacement parts from the highest quality materials. Because we precision engineer them in-house, Natoli parts meet and often exceed the functionality and longevity of OEM parts.



## Same-Day Shipping

We maintain an on-site inventory of over 250,000 replacement parts, which means the vast majority of our orders ship out the same day. Order today, ship tomorrow.



## Parts Sample Program

Need a part not found in our catalog? We can custom make it and you may even receive it for free! Send us a sample part and Natoli will reverse engineer it and send you the first part produced complimentary. Some conditions do apply. Contact your Natoli representative for details.



## Custom Parts

Each year we custom make hundreds of parts engineered to our customer's exact specifications. This is a special service we offer to all of our customers because often times they cannot find the part anywhere else. If you're searching for that "hard-to-find" part and do not see it listed in the Custom Parts section of this catalog, call us and most probably we can make it for you.



## Accessories Catalog

We publish the most comprehensive accessories catalog in the industry which features everything you need to keep your tablet press running efficiently and trouble-free. View the catalog at: [Natoli.com](http://Natoli.com), or call us at +1 636-926-8900 and we'll ship it to you the same day.

## Table of Contents

1090i WiP	15
1200i	16
2090i	20
2090 WiP	23
2200i	24
3090i	25
3090 WiP	29
3102	31
3200i	32
P-1000	33
P-1200	34
P-2000	37
P-2100	39
P-2200	41
P-3000	44
P-3100	50
P-3102	51
PT-2090	52
PT-3090	56
PT-3200	66
PT-3200i	70



## 1090i WiP

Part	Category	Part #	OEM	Page
12MM FILL CAM - EU 1"	Lower Cam Tracks	F10-598	3105598	15
WEAR PLATE	Lower Cam Tracks	F10-915	3113915	15
12MM FILL CAM - IPT 19	Lower Cam Tracks	F-691		15
TOOTHED BELT FOR F-O-M	Product Control	F-305	3795305	15
PUNCH SEALS LOWER "B"	Turret Hardware	F-546	3115546	15
17 STATION TURRET	Turrets	F10-17T		15
OUTER SHANK FELT 66.3x26x5	Upper Cam Tracks	F-6487	3126487	15

## 1200i

Part	Category	Part #	OEM	Page
WEAR PLATE	Lower Cam Tracks	F10-915	3113915	16
THRUST PIECE (EJECTION RAMP)	Lower Cam Tracks	F12-765	3113765	16
TIGHT PUNCH CONTROL DOSING	Lower Cam Tracks	F12-816	3113816	16
COLLECTOR RAIL - EU 1	Lower Cam Tracks	F-335	3137335	16
TRANSITION CAM - MAIN COMPRESSION	Lower Cam Tracks	F-3723	3113723	16
BASE PLATE FOR EJECTOR	Lower Cam Tracks	F-3900	3113900	16
COLLECTOR RAIL - EU 1	Lower Cam Tracks	F-838	3114838	16
PRESSURE LEDGE	Lower Cam Tracks	F-888	3113888	16
12MM FILL CAM - EU-B	Lower Cam Tracks	F-746	3114746	16
14MM FILL CAM - EU 19	Lower Cam Tracks	F-809	3115809	16
6MM FILL CAM - EU 19	Lower Cam Tracks	F-744	3114744	16
8MM FILL CAM EU-B	Lower Cam Tracks	F-745	3114745	16
10MM FILL CAM EU 19	Lower Cam Tracks	F-807	3114807	16
SHIMS FOR EJECTOR PLATE	Lower Cam Tracks	F-59	3113959	16
TRANSFER CAM FOR PRE & MAIN PRESSURE STATION	Lower Cam Tracks	F-4691		16
DOSING HEAD EU1-441	Lower Cam Tracks	F-998		17
PRESSURE ROLL W/O BEARING	Pressure Components	F-89	3114089	17
PRESSURE ROLL W/BEARING	Pressure Components	F-89/WB	3114089	17
11MM SLIDE IN BRONZE SEAL	Product Control	F-191	3136191	17
16MM SLIDE IN BRONZE SEAL	Product Control	F-192	3136192	17
RECEIVER BLOCK	Product Control	F-3836		17
11MM SLIDE IN SEAL - PEEK	Product Control	F-61		17
25MM SLIDE IN SEAL - PEEK	Product Control	F-794	9178794	17
BASE PLATE FOR BRONZE SEAL	Product Control	F-90	3136190	17
COVER PLATE	Product Control	F-96	3117696	17
FILLING WHEEL - PLOW	Product Control	F-464/1		17
REVERSE DOSING WHEEL W/FLAT RODS - PLOW	Product Control	F-66/1		17
FEEDER PAN	Product Control	F-711	3113711	17
25MM SLIDE IN BRONZE SEAL	Product Control	F-93	3136193	17
25MM SLIDE IN SSEAL - TITANIUM	Product Control	F-93/T		17
16MM SLIDE IN PEEK SEAL	Product Control	F-765	9178765	18
24 STATION TURRET ASSEMBLY	Turrets	F12I-24T/A		18
24 STATION TURRET - EU B	Turrets	F12IE-24T		18
PUNCH RESTRAINER O-RING 165 X 3	Turret Hardware	F-106	3722106	18
HOLD DOWN LEDGE - EU 1	Turret Hardware	F-4836	3114836	18
PUNCH GUIDE SEAL - 1"	Turret Hardware	F-624	2214624	18
PUNCH RESTRAINER 19	Turret Hardware	F-406	3733406	18
PUNCH GUIDE SEAL - 3/4"/19 MM	Turret Hardware	F-667	2147667	18
CROSS ROLLER BEARING	Turret Hardware	F-606		18
PUSH DOWN RAIL PRE - MAIN COMPRESSION	Upper Cam Tracks	F-01		18
DWELL CAM FOR PUNCH	Upper Cam Tracks	F-06/1		18
UPPER LOWERING CAM WITH HEAD LUBE - EU 19	Upper Cam Tracks	F-2485	3112485	18
UPPER RAISING CAM - EU 1" - STEEL	Upper Cam Tracks	F-356	3118356	18
TRANSITION CAM - MAIN COMPRESSION	Upper Cam Tracks	F-3723	3113723	18
PRE-MAIN DWELL CAM - EU "1" - PLASTIC	Upper Cam Tracks	F-701	3117701	18
UPPER LOWERING CAM WITH HEAD LUBE - EU 1"	Upper Cam Tracks	F-84	3112484	19
LUBE FELT FOR PUNCH SHANK (WIPING FELT)	Upper Cam Tracks	F-612	3101612	19
PRESSURE LEDGE- DELRIN	Upper Cam Tracks	F-888-P	3113888P	19
UPPER LOWERING CAM W/HEAD LUBE-EU1-441 - PLASTIC	Upper Cam Tracks	F-825	3118825	19
UPPER RAISING CAM - EU1 - 441 - STEEL	Upper Cam Tracks	F-643	3118643	19
LOWER PRESSURE RAIL EU1-441	Upper Cam Tracks	F-21	3114521	19



## 2090i

Part	Category	Part #	OEM	Page
WEIGHT ADJUSTER	Lower Cam Tracks	F-086	3134086	20
LEAD PIECE - EJECTOR - 32 STATION	Lower Cam Tracks	F-374	3113374	20
12MM FILL CAM EU 19	Lower Cam Tracks	F-444	3111444	20
6MM FILL CAM EU 19	Lower Cam Tracks	F-898	3110898	20
16MM FILL CAM EU 19	Lower Cam Tracks	F-899	3110899	20
18MM FILL CAM - EU 19	Lower Cam Tracks	F-900	3110900	20
FILLING CAM 14MM IPT 1"	Lower Cam Tracks	F-4434	3114434	20
12MM FILL CAM IPT 1"	Lower Cam Tracks	F-4433	3114433	20
FILLING CAM 10MM IPT 1"	Lower Cam Tracks	F-432	3114432	20
FILLING CAM 6MM IPT-19	Lower Cam Tracks	F-410	3114410	20
HOLDING LEDGE FOR LOWER CAMS IPT 19	Lower Cam Tracks	F-919	3110919	20
HOLD DOWN LEDGE - IPT 19	Lower Cam Tracks	F-929	3110929	20
LOWER CAM BODY	Lower Cam Tracks	F-978	3111978	20
HOLD DOWN LEDGE IPT 1"	Lower Cam Tracks	F-017	3112017	20
FILLING CAM - 8MM - EU 19	Lower Cam Tracks	F-858	3110858	20
FILLING CAM - 12MM -EU1-441	Lower Cam Tracks	F-254		21
FILLING CAM - 10MM - EU 19	Lower Cam Tracks	F-614	3110614	21
FILL CAM 10MM FS12	Lower Cam Tracks	F-264		21
PRESSURE ROLL W/O BEARING	Pressure Components	F-89	3114089	21
PRESSURE ROLL W/BEARING	Pressure Components	F-89/WB	3114089	21
S.H. SET SCREW	Pressure Components	N-6833		21
SLIDE IN BRONZE SEAL FOR F-O-M TABLETS UP TO 11MM	Product Control	F-34	3127034	21
SLIDE IN BRONZE SEAL FOR F-O-M TABLETS UP TO 16MM	Product Control	F-35	3127035	21
SLIDE-IN BRONZE SEAL - 25MM	Product Control	F-36	3127036	21
SCRAPER BAR - BRONZE	Product Control	F-361	3106361C	21
FILLING PLATE FOR BRONZE SEALING SEGMENT	Product Control	F-7032	3127032	21
DRIVE SHAFT - F-O-M	Product Control	F-845		21
FILLING WHEEL - PLOW	Product Control	F-464/1		21
REVERSE DOSING WHEEL W/FLAT RODS - PLOW	Product Control	F-66/1		21
SLIDE IN PEEK SEAL FOR F-O-M TABLETS UP TO 25MM	Product Control	F-4636	3134636	21
SLIDE IN PEEK SEAL FOR F-O-M TABLETS UP TO 11MM	Product Control	F-4634	3134634	22
PUNCH RESTRAINER O-RING 400x8	Turret Hardware	F-1205	3761205	22
PUNCH GUIDE SEAL - 1"	Turret Hardware	F-624	2214624	22
PUNCH GUIDE SEAL - 3/4"/19MM	Turret Hardware	F-667	2147667	22
PUNCH GUIDE SEAL - 3/4 19MM -FDA	Turret Hardware	F-667/1	2147667	22
S.H. SET SCREW	Turret Hardware	N-6833		22
PUNCH RESTRAINER 19	Turret Hardware	F-705	3772705	22
29 STATION TURRET ASSEMBLY	Turrets	F29-29T/A		22
36 STATION TURRET ASSEMBLY	Turrets	F29-36T/A		22
LUBE FELT/HEAD IPT1" EU1"	Upper Cam Tracks	F-026	3133026	22
LUBE FELT FOR FLAT CAMS IPT19, EU19	Upper Cam Tracks	F-365	3115365	22
LUBE FELT FOR PUNCH SHANK (WIPING FELT)	Upper Cam Tracks	F-612	3101612	22
HEAD LUBE CAM - EU 19	Upper Cam Tracks	F-390	3118390	22

## 2090 WiP

Part	Category	Part #	OEM	Page
8MM FILL CAM - EU 19	Lower Cam Tracks	F-806	3778806	23
PUNCH RESTRAINER O-RING 400x8	Turret Hardware	F-1205	3761205	23
PUNCH SEALS LOWER "B"	Turret Hardware	F-546	3115546	23
PUNCH GUIDE SEAL 1" UNKEYED ALUMINUM CASING	Turret Hardware	F-549	3115549	23
PUNCH RESTRAINER 19	Turret Hardware	F-705	3772705	23
LUBE FELT/HEAD IPT1" EU1"	Upper Cam Tracks	F-026	3133026	23
LUBE FELT FOR FLAT CAMS IPT 19, EU 19	Upper Cam Tracks	F-463	3119463	23
HOLDING LEDGE PRE/MAIN COMPR. IPT 19	Upper Cam Tracks	F-723	3117723	23
PLASTIC PRESSURE LEDGE PRE/MAIN COMPR	Upper Cam Tracks	F-637	3117637	23
OUTER SHANK FELT 66.3x26x5	Upper Cam Tracks	F-6487	3126487	23

## 2200i

Part	Category	Part #	OEM	Page
20MM FILL CAM EU 1"-441 FOR MG STEARATE SYSTEM	Lower Cam Tracks	F-8706	3138706	24
18MM FILL CAM - EU 19	Lower Cam Tracks	F-900	3110900	24
FILLING CAM - 10MM - EU 19	Lower Cam Tracks	F-614	3110614	24
FILLING CAM - 12MM -EU1-441	Lower Cam Tracks	F-254		24
FILLING CAM - 6MM - EU1-441	Lower Cam Tracks	F-440	3114440	24
36 STATION TURRET	Turrets	F22-36T		24
LUBE FELT FOR PUNCH SHANK (WIPING FELT)	Upper Cam Tracks	F-612	310612	24

# 3090i

Part	Category	Part #	OEM	Page
WEAR PLATE - EJECTOR	Lower Cam Tracks	F-003	3109003	25
PULL DOWN CAM - DOSING	Lower Cam Tracks	F-034	3133034	25
GRIP LEDGE FOR DOSING	Lower Cam Tracks	F-29	3133029	25
PULL DOWN CAM	Lower Cam Tracks	F-30	3133030	25
EJECTION/DOSING RAMP	Lower Cam Tracks	F-387	3108387	25
WEAR PLATE	Lower Cam Tracks	F39I-002		25
14MM FILL CAM IPT 1"	Lower Cam Tracks	F-458	3113458	25
18MM FILL CAM IPT 1"	Lower Cam Tracks	F-895	3112895	25
8 MM FILL CAM - EU 19	Lower Cam Tracks	F-07		25
GUIDE PIECE	Lower Cam Tracks	F-353	9138353	25
GRIP LEDGE - EJECTOR - IPT19	Lower Cam Tracks	F-799	3109799	25
8 MM FILL CAM - EU 19	Lower Cam Tracks	F-806	3778806	25
18MM FILL CAM - EU 1"	Lower Cam Tracks	F-069		25
10MM FILL CAM - EU 1"	Lower Cam Tracks	F-065		25
14MM FILL CAM - EU 19	Lower Cam Tracks	F-566		25
PRESSURE ROLL	Pressure Components	F-89/1	3114089	26
PRESSURE ROLLER W/BEARING	Pressure Components	F-89/1WB	3114089	26
BEARING FOR PRESSURE ROLL	Pressure Components	SG-513-BRG		26
SNAP RING FOR PRESSURE ROLL BEARING	Pressure Components	SG-513-SR		26
ROTARY VANE	Product Control	F-096/1		26
ROTARY VANE	Product Control	F-096/2		26
OVAL PANE FOR FEEDING HOPPER 92MM	Product Control	F-292	3116292	26
16MM BRONZE INSERT	Product Control	F-39	3128639	26
STAINLESS STEEL DISTRIBUTING WHEEL	Product Control	F-459	3512495	26
FEEDER PAN	Product Control	F-5	3128805	26
SLIDE IN BRONZE SEAL 11MM	Product Control	F-636	3128636	26
STAINLESS STEEL FILLING WHEEL	Product Control	F-696	3510696	26
SCRAPER A 6X12X6/4	Product Control	F-907		26
TAIL OVER DIE	Product Control	F-940	3109940	26
F-O-M BASE PLATE	Product Control	F-803	3128036	26
BASE PLATE FOR BRONZE SEGMENT	Product Control	F-747	313747	27
SLIDE IN BRONZE SEAL 25MM	Product Control	F-40	3128640	27
FILLING WHEEL - PLOW	Product Control	F-464/1	3501464	27
REVERSE DOSING WHEEL W/FLAT RODS - PLOW	Product Control	F-66/1		27
FILLING PLATE FOR BRONZE SEALING SEGMENT	Product Control	F-474	3131474	27
SCRAPER BAR - BRONZE	Product Control	F-416	3110416	27
SLIDE IN TEFLON SEGMENT 11 MM OPEN	Product Control	F-9205	7009205	27
11 MM CLOSED SLIDE IN SEAL	Product Control	F-1462		27
TALBET TAKE OFF- VACUUM SCRAPER ASSEMBLY	Product Control	F-877-PF		27
49 STATION TURRET ASSEMBLY	Turret	F39I-49T/A		27
73 STATION TURRET ASSEMBLY	Turret	F39I-73T/A		27
O-RING D=600x8 NBR 70 SHORE A - PUNCH RETAINER	Turret Hardware	F-505	3752505	27
PUNCH RESTRAINER 19	Turret Hardware	F-605	3752605	27
PUNCH GUIDE SEAL - 1"	Turret Hardware	F-624	2214624	27
PUNCH GUIDE SEAL - 3/4"/19MM	Turret Hardware	F-667	2147667	27
LUBE FELT/HEAD IPT1" EU1" FLAT	Upper Cam Tracks	F-026	3133026	28
WIPING FELT	Upper Cam Tracks	F-28	3133028	28
LUBE FELT FOR FLAT CAMS IPT 19, EU 19	Upper Cam Tracks	F-463	3119463	28
PLASTIC HOLDING LEDGE - PUNCH REMOVAL	Upper Cam Tracks	F-714	3117714	28
OUTER SHANK FELT 66.3x26x5	Upper Cam Tracks	F-6487	3126487	28
LUBE FELT FOR PUNCH SHANK (WIPING FELT)	Upper Cam Tracks	F-612	3101612	28
UPPER RAISING CAM - STEEL- IPT 19	Upper Cam Tracks	F-218	3116218	28
PRESSURE LEDGE PRE & MAIN PRESSURE	Upper Cam Tracks	F-391	3108391	28
LUBE CAM COVER IPT 1"	Upper Cam Tracks	F-025	3133025	28
LUBE CAM FOR HEAD & OUTER SHANK EU1/441	Upper Cam Tracks	F-3023	3133023	28
LUBE CAM TOP-HEAD & SHAFT LUBE; INSIDE - EU1/441	Upper Cam Tracks	F-17	3133017	28
UPPER RAISING CAM - STEEL - EU1/441 - ET5	Upper Cam Tracks	F-446		28

# 3090 WiP

Part	Category	Part #	OEM	Page
8 MM FILL CAM - IPT 19	Lower Cam Tracks	F-113	3137113	29
STARTER PIECE FOR EJECTOR	Lower Cam Tracks	F-199	3126199	29
GRIP LEDGE FOR DOSING-IPT 19	Lower Cam Tracks	F-3	3137163	29
PULL DOWN LEDGE FOR DOSING-IPT 19	Lower Cam Tracks	F-4	3137164	29
PULL DOWN CAM FOR EJECTOR-IPT 19	Lower Cam Tracks	F-8	3136028	29
WEAR PLATE FOR EJECTOR	Lower Cam Tracks	F-164	3133164	29
8 MM FILL CAM - EU 19	Lower Cam Tracks	F-806	3778806	29
OVAL PANE FOR FEEDING HOPPER 92MM	Product Control	F-292	3116292	29
16 MM BRONZE INSERT	Product Control	F-39	3128639	29

## 3090 WiP (cont.)

Part	Category	Part #	OEM	Page
SLIDE IN BRONZE SEAL 11MM	Product Control	F-636	3128636	29
SLIDING SLEEVE FOR F-O-M	Product Control	F-308	3109308	29
DRIVE SHAFT FOR F-O-M	Product Control	F-307	3109307	29
O-RING - PUNCH RETAINER	Turret Hardware	F-505	3752505	29
PUNCH SEALS LOWER "B"	Turret Hardware	F-546	3115546	29
PUNCH RESTRAINER 19	Turret Hardware	F-605	3752605	29
LOWERING CAM - IPT 19	Upper Cam Tracks	F-27	3136027	30
LUBE FELT FOR FLAT CAMS IPT 19, EU 19	Upper Cam Tracks	F-463	3119463	30
PLASTIC HOLDING LEDGE - PUNCH REMOVAL	Upper Cam Tracks	F-714	3117714	30
HOLDING BAR FLAT PUNCH - IPT 19	Upper Cam Tracks	F-724	3117724	30
LUBE CAM COVER FOR PUNCH DIAMETER IPT 19	Upper Cam Tracks	F-024	3133024	30
LUBE CAM FOR HEAD AND OUTER SHANK IPT19	Upper Cam Tracks	F-020	3133020	30
OUTER SHANK FELT 66.3x26x5	Upper Cam Tracks	F-6487	3126487	30
PRESSURE LEDGE PRE & MAIN PRESSURE	Upper Cam Tracks	F-391	3108391	30

## 3102

Part	Category	Part #	OEM	Page
FEEDER PAN	Product Control	F-930	3500930	31
FEED FRAME BRACKET	Product Control	F-930-1		31
LARGE FEEDER INSERT	Product Control	F-930-2		31
SMALL FEEDER INSERT	Product Control	F-930-3		31
FEEDER PAN ASSEMBLY	Product Control	F-930/A		31

## 3200i

Part	Category	Part #	OEM	Page
14MM FILL CAM - EU 19	Lower Cam Tracks	F-566		32
18MM FILL CAM - EU 1"	Lower Cam Tracks	F-069		32
10MM FILL CAM - EU 1"	Lower Cam Tracks	F-065		32
SCRAPER A 6x12x6/4	Product Control	F-907		32
PLASTIC HOLDING LEDGE - PUNCH REMOVAL	Upper Cam Tracks	F-714	3117714	32
UPPER LOWERING CAM IPT 19	Upper Cam Tracks	F-692		32
LUBE FELT FOR PUNCH SHANK (WIPING FELT)	Upper Cam Tracks	F-612	3101612	32
LUBE CAM FOR HEAD & OUTER SHANK EU1/441	Upper Cam Tracks	F-3023	3133023	32
LUBE CAM TOP FOR HEAD & SHAFT LUBE; INSIDE-EU1/441	Upper Cam Tracks	F-17	3133017	32
UPPER RAISING CAM - STEEL - EU1/441 - ET5	Upper Cam Tracks	F-446		32

## P-1000

Part	Category	Part #	OEM	Page
14MM FILL CAM - EU 19	Lower Cam Tracks	F10-063	3100617	33
GRIP LEDGE DOSING D1 - EU 19	Lower Cam Tracks	F10-080		33
GUIDE PIECE	Lower Cam Tracks	F-103	3133103	33
12MM FILL CAM - EU 1"	Lower Cam Tracks	F10-598	3105598	33
WEAR PLATE	Lower Cam Tracks	F10-915	3113915	33
12MM FILL CAM - IPT 19	Lower Cam Tracks	F-691		33
10MM FILL CAM - EU19	Lower Cam Tracks	F10-061	3100615	33
12MM FILL CAM - EU19	Lower Cam Tracks	F10-062	3100616	33
TOOTHED BELT FOR F-O-M	Product Control	F-305	3795305	33
PUNCH SEALS LOWER "B"	Turret Hardware	F-546	3115546	33
PUNCH RESTRAINER 19	Turret Hardware	F-406	3733406	33
17 STATION TURRET ASSEMBLY	Turrets	F10-17T		33
OUTER SHANK FELT 66.3x26x5	Upper Cam Tracks	F-6487	3126487	33

## P-1200

Part	Category	Part #	OEM	Page
WEAR PLATE	Lower Cam Tracks	F10-915	3113915	34
TRANSITION CAM PRE-COMPRESSION	Lower Cam Tracks	F12-722	3113722	34
THRUST PIECE (EJECTION RAMP)	Lower Cam Tracks	F12-765	3113765	34
TIGHT PUNCH CONTROL DOSING	Lower Cam Tracks	F12-816	3113816	34
DOSING LEDGE	Lower Cam Tracks	F12-817	3113817	34
16MM FILL CAM - EU1"/441	Lower Cam Tracks	F-55	3114755	34

## P-1200 (cont.)

Part	Category	Part #	OEM	Page
16MM FILL CAM - EU 19	Lower Cam Tracks	F-748	3114748	34
18MM FILL CAM - EU 19	Lower Cam Tracks	F-749	3114749	34
14MM FILL CAM - EU1"/441	Lower Cam Tracks	F-754	3114754	34
18MM FILL CAM - EU 1"	Lower Cam Tracks	F-829		34
PRESSURE LEDGE	Lower Cam Tracks	F-888	3113888	34
12MM FILL CAM EU B	Lower Cam Tracks	F-748/12MM		34
16MM FILL CAM EU 1"	Lower Cam Tracks	F-828	3114828	34
12MM FILL CAM EU-1"	Lower Cam Tracks	F-26	3114826	34
20MM FILL CAM EU 1	Lower Cam Tracks	F-197		34
8MM FILL CAM - EU1-441	Lower Cam Tracks	F-751	3114751	35
PRESSURE ROLL W/O BEARING	Pressure Components	F-89	3114089	35
PRESSURE ROLL W/BEARING	Pressure Components	F-89/WB	3114089	35
SCRAPER BLADE	Product Control	F12-397		35
11MM SLIDE IN BRONZE SEAL	Product Control	F-191	3136191	35
16MM SLIDE IN BRONZE SEAL	Product Control	F-192	3136192	35
FEEDER PAN	Product Control	F-711	3113711	35
F-O-M BASE PLATE FOR BRONZE SEAL	Product Control	F-90	3136190	35
25MM SLIDE IN BRONZE SEAL	Product Control	F-93	3136193	35
SLIDING SLEEVE FOR F-O-M	Product Control	F-308	3109308	35
SCRAPER BAR - DELRIN	Product Control	F12-397/D		35
16MM SLIDE IN PEEK SEAL	Product Control	F-765	9178765	35
20 STATION TURRET ASSEMBLY	Turret	F12-20T/A		35
DIE LOCK SCREW	Turret Hardware	DL-12	1106012	35
DIE LOCK SCREW - EXTENDED TIP	Turret Hardware	DL-8	52411232002	35
PUNCH GUIDE SEAL - 1"	Turret Hardware	F-624	2214624	36
PUNCH GUIDE SEAL - 3/4"/19MM	Turret Hardware	F-667	2147667	36
WAVE SPRING	Turret Hardware	F-947	3101947	36
PUNCH RESTRAINER 1"	Turret Hardware	F-406/1	3733406	36
PUNCH RESTRAINER 19	Turret Hardware	F-406	3733406	36
PUNCH HEAD FELT HOLDER	Upper Cam Tracks	F-763		36
UPPER LOWERING CAM - EU 19	Upper Cam Tracks	F-812	3118812	36
LUBE FELT FOR PUNCH SHANK (WIPING FELT)	Upper Cam Tracks	F-612	3101612	36
PRESSURE LEDGE- DELRIN	Upper Cam Tracks	F-888-P	3113888P	36
LOWER PRESSURE RAIL EU1-441	Upper Cam Tracks	F-21	3114521	36
DWELL CAM FOR PUNCH REMOVAL - EU1-441 - PLASTIC	Upper Cam Tracks	F-827	3118827	36
PRE-MAIN DWELL CAM - EU1-441 - PLASTIC	Upper Cam Tracks	F-826	3118826	36

## P-2000

Part	Category	Part #	OEM	Page
DOSING WEAR PLATE	Lower Cam Tracks	F-155	3100155	37
WEAR PLATE FOR EJECTOR	Lower Cam Tracks	F2-2	1706017	37
TRANSITION CAM BETWEEN PRECOMP & MAIN ROLLER	Lower Cam Tracks	F-321	XX4321	37
LEDGE CAM - IPT 19	Lower Cam Tracks	F-687	3101687C	37
HOLDING LEDGE CAM - IPT 19	Lower Cam Tracks	F-689	3101689C	37
EJECTION PLATE	Lower Cam Tracks	F-81	3100181	37
BEARING RETAINER PLATE - TAMPING ROLLER ASSEMBLY	Pressure Components	F-299	3100299	37
WASHER - TAMPING ROLLER ASSEMBLY	Pressure Components	F-304	3100304	37
PRESSURE ROLL WITH BEARING	Pressure Components	F-6	3023006	37
BEARING FOR ROLL	Pressure Components	F-77	3023077	37
F-O-M BOTTOM PLATE	Product Control	F2-24	44-06-020	37
F-O-M BOTTOM PLATE - EARLY MODEL	Product Control	F2-24E		37
F-O-M BOTTOM PLATE-EARLY MODEL (DELTRIN)	Product Control	F2-24EP		37
43 STATION TURRET ASSEMBLY	Turret	F2-43T		37
36 STATION TURRET ASSEMBLY	Turret	F2-36T		37
DIE LOCK SCREW	Turret Hardware	DL-12	1106012	38
DIE LOCK SCREW - EXTENDED TIP	Turret Hardware	DL-8	52411232002	38
LOWER PUNCH RETAINER (BALL PLUNGER)	Turret Hardware	F-02		38
NYLOC LOWER PUNCH SPRING SCREW	Turret Hardware	F3-1N		38
PUNCH GUIDE SEAL - 1"	Turret Hardware	F-624	2214624	38
PUNCH GUIDE SEAL - 3/4"/19MM	Turret Hardware	F-667	2147667	38
LOWER PUNCH RETAINER	Turret Hardware	F-9		38
WAVE SPRING	Turret Hardware	F-947	3101947	38

# P-2100

Part	Category	Part #	OEM	Page
DOSING WEAR PLATE	Lower Cam Tracks	F-155	3100155	39
RAMP	Lower Cam Tracks	F21-429	3101429	39
12MM FILL CAM - IPT 19	Lower Cam Tracks	F21-816	3101816	39
14MM FILL CAM - IPT 19	Lower Cam Tracks	F21-817	3102817	39
8MM FILL CAM - IPT 19	Lower Cam Tracks	F21-814	3101814	39
16MM FILL CAM - IPT 19	Lower Cam Tracks	F21-818	3101818	39
TRANSITION CAM BETWEEN PRECOMP & MAIN ROLLER	Lower Cam Tracks	F-321	XX4321	39
LEDGE CAM - IPT 19	Lower Cam Tracks	F-687	3101687C	39
HOLDING LEDGE CAM - IPT 19	Lower Cam Tracks	F-689	3101689C	39
WEAR PLATE FOR EJECTOR	Lower Cam Tracks	F-80	3100180	39
EJECTION PLATE	Lower Cam Tracks	F-81	3100181	39
10MM FILL CAM - EU 1"	Lower Cam Tracks	F-821	3101821	39
14 MM FILL CAM - EU 1"	Lower Cam Tracks	F-823	3101823	39
12 MM FILL CAM - EU 19	Lower Cam Tracks	F-808		39
12MM FILL CAM - EU 1"	Lower Cam Tracks	F-822	3101822	39
8MM FILL CAM - EU 1"	Lower Cam Tracks	F-820	3101820	40
SCRAPER BLADE	Product Control	F21-11	3110411	40
43 STATION TURRET ASSEMBLY	Turret	F2-43T		40
PUNCH GUIDE SEAL - 1"	Turret Hardware	F-624	2214624	40
PUNCH GUIDE SEAL - 3/4"/19MM	Turret Hardware	F-667	2147667	40
WAVE SPRING	Turret Hardware	F-947	3101947	40
UPPER LIFTING CAM- EU19	Upper Cam Tracks	F21-431	3101431	40
FLIGHT CONTROL CAM "B"	Upper Cam Tracks	F21-689	3101689C	40

# P-2200

Part	Category	Part #	OEM	Page
TOOTHED BELT FOR F-O-M DRIVE	Drive Components	F-1605	3751605	41
EJECTION / DOSING RAMP	Lower Cam Tracks	F-387	3108387	41
12MM FILL CAM IPT 1"	Lower Cam Tracks	F-4433	3114433	41
TRANSITION CAM-LOWER PRECOMP. ROLL	Lower Cam Tracks	F-557	3110557	41
TRAP LEDGE FOR DOSING - IPT 19	Lower Cam Tracks	F-927	3110927	41
LOWER DOSING CAM - IPT 19	Lower Cam Tracks	F-928	3110928	41
FILLING CAM 14MM IPT 1'	Lower Cam Tracks	F-4434	3114434	41
FILLING CAM 16MM IPT 1"	Lower Cam Tracks	F-4435	3114435	41
HOLD DOWN LEDGE - IPT 19	Lower Cam Tracks	F-929	3110929	41
PRESSURE ROLL W/O BEARING	Pressure Components	F-89	3114089	41
PRESSURE ROLL W/BEARING	Pressure Components	F-89/WB	3114089	41
F-O-M BASE PLATE	Product Control	F-126	3112126C	41
SCRAPER BAR - BRONZE	Product Control	F-361	3106361C	41
BASE PLATE F-O-M	Product Control	F-283	3504283	41
F-O-M ASSEMBLY	Product Control	F-674/A		41
GEAR F-O-M	Product Control	F-674	3504674	42
SLIDING SLEEVE FOR F-O-M	Product Control	F-308	3109308	42
DRIVE SHAFT FOR F-O-M	Product Control	F-307	3109307	42
BAFFLE - DELRIN	Product Control	F-575-2-P		42
INTERMEDIATE PLATE - DELRIN	Product Control	F-575-P		42
INTERMEDIATE PLATE, F-O-M W/BENT	Product Control	F-575		42
SCRAPER - DELRIN	Product Control	F-575-1-P		42
FILLING WHEEL - BRONZE	Product Control	F-464	3501464, 3501464C	42
METERING WHEEL W/FLAT RODS	Product Control	F-465	3501465, 3501465C	42
REVERSE DOSING WHEEL W/FLAT RODS	Product Control	F-66	3501466C	42
SCRAPER ASSEMBLY	Product Control	F-3906		42
TAIL OVER DIE	Product Control	F-6362		42
COVER FOR SCRAPER	Product Control	F-363		42
PUNCH RESTRAINER O-RING 400x8	Turret Hardware	F-1205	3761205	42
PUNCH SEALS LOWER "B"	Turret Hardware	F-546	3115546	42
PUNCH GUIDE SEAL - 1" - UNKEYED	Turret Hardware	F-624	2214624	43
WAVE SPRING	Turret Hardware	F-947	3101947	43
PUNCH RESTRAINER 19	Turret Hardware	F-705	3772705	43
LUBE FELT FOR FLAT CAMS IPT19, EU19	Upper Cam Tracks	F-365	3115365	43
LUBE FELT / HEAD IPT1"EU1 FLAT	Upper Cam Tracks	F-426	3115426	43
ROTARY SHAFT SEAL	Upper Cam Tracks	F-996	2147996	43
LUBE FELT FOR PUNCH SHANK (WIPING FELT)	Upper Cam Tracks	F-612	3101612	43
HEAD LUBE CAM - EU 19	Upper Cam Tracks	F-390	3118390	43



# P-3000

Part	Category	Part #	OEM	Page
6MM BASE SECTION ONLY	Lower Cam Tracks	F3-6B		44
8MM BASE SECTION ONLY	Lower Cam Tracks	F3-8B		44
10MM BASE SECTION ONLY - ALL SERIES	Lower Cam Tracks	F3-10B		44
11MM BASE SECTION ONLY	Lower Cam Tracks	F3-11B		44
12MM BASE SECTION ONLY	Lower Cam Tracks	F3-12B		44
14MM BASE SECTION ONLY	Lower Cam Tracks	F3-14B		44
16MM BASE SECTION ONLY	Lower Cam Tracks	F3-16B		44
BASE SECTION ONLY	Lower Cam Tracks	F3-18B		44
20MM BASE SECTION ONLY	Lower Cam Tracks	F3-20B		44
6MM - TRACK SECTION ONLY - IPT 19	Lower Cam Tracks	FB3-6T		44
6MM - TRACK SECTION ONLY - IPT 1"	Lower Cam Tracks	FD3-6T		44
8MM - TRACK SECTION ONLY - IPT 1"	Lower Cam Tracks	FD3-8T		44
8MM - TRACK SECTION ONLY - IPT 19	Lower Cam Tracks	FB3-8T		44
10MM - TRACK SECTION ONLY - IPT 1"	Lower Cam Tracks	FD3-10T		45
10MM - TRACK SECTION ONLY - IPT 19	Lower Cam Tracks	FB3-10T		45
11MM - TRACK SECTION ONLY - EU1"	Lower Cam Tracks	FD3-11TE4		45
11MM - FILL CAM - COMPLETE - EU1"/441	Lower Cam Tracks	FD3-11CE4		45
12MM - TRACK SECTION ONLY - IPT 19	Lower Cam Tracks	FB3-12T		45
12MM - TRACK SECTION ONLY - IPT 1"	Lower Cam Tracks	FD3-12T		45
14MM - TRACK SECTION ONLY - IPT 19	Lower Cam Tracks	FB3-14T		45
14MM - TRACK SECTION - IPT 1"	Lower Cam Tracks	FD3-14T		45
16MM - TRACK SECTION ONLY - IPT 1"	Lower Cam Tracks	FD3-16T		45
16MM - TRACK SECTION ONLY - IPT 19	Lower Cam Tracks	FB3-16T		45
16MM - TRACK SECTION ONLY - EU1"	Lower Cam Tracks	FD3-16TE4		45
18MM - TRACK SECTION ONLY - IPT 19	Lower Cam Tracks	FB3-18T		45
20MM - TRACK SECTION ONLY - IPT 19	Lower Cam Tracks	FB3-20T		45
20MM - TRACK SECTION ONLY - IPT 1"	Lower Cam Tracks	FD3-20T		45
6MM FILL CAM - COMPLETE - IPT 19	Lower Cam Tracks	FB3-6C		45
8MM FILL CAM - COMPLETE - IPT 1"	Lower Cam Tracks	FD3-8C		46
8MM FILL CAM - COMPLETE - IPT 19	Lower Cam Tracks	FB3-8C		46
10MM FILL CAM - COMPLETE - IPT 1"	Lower Cam Tracks	FD3-10C		46
10MM FILL CAM - COMPLETE - IPT 19	Lower Cam Tracks	FB3-10C		46
12MM FILL CAM - COMPLETE - IPT 1"	Lower Cam Tracks	FD3-12C		46
12MM FILL CAM - COMPLETE - IPT 19	Lower Cam Tracks	FB3-12C		46
6MM FILL CAM - COMPLETE - IPT 1"	Lower Cam Tracks	FD3-6C		46
14MM FILL CAM - COMPLETE - IPT 1"	Lower Cam Tracks	FD3-14C		46
14MM FILL CAM - COMPLETE - IPT 19	Lower Cam Tracks	FB3-14C		46
16MM FILL CAM - COMPLETE - IPT 1"	Lower Cam Tracks	FD3-16C		46
16MM - FILL CAM - COMPLETE - EU1"	Lower Cam Tracks	FD3-16CE4		46
16MM FILL CAM - COMPLETE - IPT 19	Lower Cam Tracks	FB3-16C		46
18MM FILL CAM - COMPLETE - IPT 1"	Lower Cam Tracks	FD3-18C		46
18MM FILL CAM - COMPLETE - IPT 19	Lower Cam Tracks	FB3-18C		46
20MM FILL CAM - COMPLETE - IPT 19	Lower Cam Tracks	FB3-20C		46
20MM FILL CAM - COMPLETE - IPT 1"	Lower Cam Tracks	FD3-20C		47
WEAR PLATE	Lower Cam Tracks	F3-04	1723004	47
LOWER PRESSURE CAM - IPT 1"	Lower Cam Tracks	FD3-10	1423016	47
LOWER PRESSURE CAM - IPT 19	Lower Cam Tracks	FB3-52	1423017	47
LOWER PRESSURE CAM - IPT 19	Lower Cam Tracks	FB3-60	1423016	47
LOWER PRESSURE CAM - IPT 1"	Lower Cam Tracks	FD3-54	1423017	47
LOWER GRIP LEDGE - IPT 19	Lower Cam Tracks	FB3-100	1423015	47
LOWER GRIP LEDGE - IPT 1"	Lower Cam Tracks	FD3-180	1423015	47
EJECTION PLATE	Lower Cam Tracks	F3-2	1723014	47
LOWER PRESSURE CAM - IPT 19	Lower Cam Tracks	FB3-110	1723003	47
LOWER PRESSURE CAM - IPT 1"	Lower Cam Tracks	FD3-20	1723003	47
PRE-COMPRESSION ROLL	Pressure Components	F3-004	31-23-004	47
BEARING FOR PRE-COMPRESSION ROLL	Pressure Components	F3-46	31-23-046	47
SNAP RING FOR ROLL PIN	Pressure Components	F3-9A		47
ROLL PIN	Pressure Components	F3-87	3023010	47
ROLL PIN LOCKNUT	Pressure Components	F3-87-1		48
SHAFT FOR PRE-COMPRESSION ROLL	Pressure Components	F3-9	31-23-009	48
PRESSURE ROLL WITH BEARING	Pressure Components	F-6	3023006	48
BEARING FOR ROLL	Pressure Components	F-77	3023077	48
THRUST COLLAR PLASTIC	Product Control	F3-038	3100038	48
TAKE-OFF BAR	Product Control	F3-01	44-23-001	48
TAKE-OFF BAR WITH FAST GATE	Product Control	F3-01/F	44-23-001	48
TAIL OVER DIE	Product Control	F3-11	45-23-011	48
F-O-M BOTTOM PLATE	Product Control	F3-14	44-23-014	48
F-O-M BOTTOM PLATE W/ GASKET	Product Control	F3-14/1		48
FEEDER BASE PAN	Product Control	F-534	3101534	48
SEALING GASKET - BRONZE (2 HOLE)	Product Control	F3-14/1-1		48

## P-3000 (cont.)

Part	Category	Part #	OEM	Page
SEALING GASKET - DELRIN (2 HOLE)	Product Control	F3-14/1-1P		48
SEALING GASKET - BRONZE (3 HOLE)	Product Control	F3-14/1-2		48
SEALING GASKET - DELRIN (3 HOLE)	Product Control	F3-14/1-2P		48
SCRAPER BLADE (DELRIN)	Product Control	F3-4/1		49
SCRAPER BLADE	Product Control	F3-4	45-23-004	49
SCRAPER BLADE COVER	Product Control	F3-5		49
37 STATION TURRET ASSEMBLY	Turret	F3-37T		49
37 STATION TURRET ASSEMBLY (STAINLESS DIETABLE)	Turret	F3-37T/SS		49
45 STATION TURRET ASSEMBLY	Turret	F3-45T		49
55 STATION TURRET ASSEMBLY	Turret	F3-55T		49
DIE LOCK SCREW	Turret Hardware	DL-12	1106012	49
DIE LOCK SCREW - EXTENDED TIP	Turret Hardware	DL-8	52411232002	49
LOWER PUNCH RETAINER (BALL PLUNGER)	Turret Hardware	F-02		49
LOWER PUNCH RETAINER	Turret Hardware	F-114		49
NYLOC LOWER PUNCH SCREW	Turret Hardware	F3-1N		49
PUNCH GUIDE SEAL - 3/4"/19MM	Turret Hardware	F-667	2147667	49
LOWER PUNCH RETAINER	Turret Hardware	F-9		49
WAVE SPRING	Turret Hardware	F-947	3101947	49

## P-3100

Part	Category	Part #	OEM	Page
11MM BASE SECTION ONLY	Lower Cam Tracks	F3-11B		50
11MM - TRACK SECTION ONLY - EU1"	Lower Cam Tracks	FD3-11TE4		50
16MM - TRACK SECTION ONLY - EU1"	Lower Cam Tracks	FD3-16TE4		50
11MM - FILL CAM - COMPLETE - EU1"/441	Lower Cam Tracks	FD3-11CE4		50
16MM - FILL CAM - COMPLETE - EU1"	Lower Cam Tracks	FD3-16CE4		50
THRUST COLLAR PLASTIC	Pressure Components	F3-038	3100038	50
DIE LOCK SCREW	Turret Hardware	DL-12	1106012	50
DIE LOCK SCREW - EXTENDED TIP	Turret Hardware	DL-8	52411232002	50

## P-3102

Part	Category	Part #	OEM	Page
11MM BASE SECTION ONLY	Lower Cam Tracks	F3-11B		51
11MM - TRACK SECTION ONLY - EU1"	Lower Cam Tracks	FD3-11TE4		51
16MM - TRACK SECTION ONLY - EU1"	Lower Cam Tracks	FD3-16TE4		51
11MM FILL CAM - EU 1"/441	Lower Cam Tracks	F-56212	531-67-22-18-253	51
11MM - FILL CAM - COMPLETE - EU1"/441	Lower Cam Tracks	FD3-11CE4		51
16MM - FILL CAM - COMPLETE - EU1"	Lower Cam Tracks	FD3-16CE4		51

## PT-2090

Part	Category	Part #	OEM	Page
TOOTHED BELT FOR F-O-M DRIVE	Drive Components	F-1605	3751605	52
WEIGHT ADJUSTER	Lower Cam Tracks	F-086	3134086	52
EJECTION / DOSING RAMP	Lower Cam Tracks	F-387	3108387	52
8 MM FILL CAM IPT 19	Lower Cam Tracks	F-411	3114411	52
12MM FILL CAM IPT 19	Lower Cam Tracks	F-413	3114413	52
12MM FILL CAM IPT 1"	Lower Cam Tracks	F-4433	3114433	52
10 MM FILL CAM EU 1"	Lower Cam Tracks	F-422	3114422	52
14MM FILL CAM IPT 1"	Lower Cam Tracks	F-4434	3114434	52
18M FILL CAM IPT 1"	Lower Cam Tracks	F-4436	3114436	52
HOLDING LEDGE LOWER CAMS IPT 19	Lower Cam Tracks	F-918	3110918	52
TRAP LEDGE FOR DOSING - IPT19	Lower Cam Tracks	F-927	3110927	52
LOWER DOSING CAM - IPT 19	Lower Cam Tracks	F-928	3110928	52
HOLD DOWN LEDGE - IPT 19	Lower Cam Tracks	F-929	3110929	52
GRIP LEDGE	Lower Cam Tracks	F-95		52
TRANSITION CAM-LOWER PRECOMP. ROLL	Lower Cam Tracks	F-557	3110557	52
FILLING CAM - 6MM - EU1-441	Lower Cam Tracks	F-440	3114440	53
PRESSURE ROLL W/O BEARING	Pressure Components	F-89	3114089	53
PRESSURE ROLL W/BEARING	Pressure Components	F-89/WB	3114089	53
BEARING FOR PRESSURE ROLL	Pressure Components	SG-513-BRG		53
SNAP RING FOR PRESSURE ROLL BEARING	Pressure Components	SG-513-SR		53
FEEDER BASE PAN	Product Control	F-126	3112126C	53
SLIDE-IN BRONZE SEAL - 16MM	Product Control	F-32	3128632	53
SEGMENT LEFT STOPPER	Product Control	F-33	3111033	53

## PT-2090 (cont.)

Part	Category	Part #	OEM	Page
SCRAPER BAR - BRONZE	Product Control	F-361	3106361C	53
SEGMENT CENTRAL STOPPER	Product Control	F-370	3110370	53
SEGMENT RIGHT STOPPER	Product Control	F-541	3114541	53
SLIDE- IN BRONZE SEAL 25MM	Product Control	F-633	3128633	53
SCRAPER	Product Control	F-640	3114640	53
SLIDING SLEEVE FOR F-O-M	Product Control	F-308	3109308	53
DRIVE SHAFT FOR F-O-M	Product Control	F-307	3109307	53
BAFFLE - DELRIN	Product Control	F-575-2-P		54
43 STATION TURRET ASSEMBLY	Turret	F29-43T		54
29 STATION TURRET ASSEMBLY	Turret	F29-29T		54
36 STATION TURRET ASSEMBLY	Turret	F29-36T		54
PUNCH RESTRAINER O-RING 400x8	Turret Hardware	F-1205	3761205	54
SPRING COVER	Turret Hardware	F-187	3108187	54
SPRING BOLT	Turret Hardware	F-188	3108188	54
PUNCH SEALS LOWER "B"	Turret Hardware	F-546	3115546	54
GUIDE KEY	Turret Hardware	F-588	3109588, 3115597	54
GUIDE BLOCK - LARGE PRESSURE SCREW ON DIE TABLE	Turret Hardware	F-597	3115597	54
PUNCH GUIDE SEAL - 1"	Turret Hardware	F-624	2214624	54
PUNCH GUIDE SEAL - 3/4"/19MM	Turret Hardware	F-667	2147667	54
FINDER THREADED PIN FOR ROTOR SHAFT	Turret Hardware	F-936	3119936	54
PUNCH RESTRAINER 19	Turret Hardware	F-705	3772705	54
SCREW COMPRESSION SPRING (length=125mm)	Turret Hardware	F-905	3751905	54
LUBE FELT FOR FLAT CAMS IPT19, EU19	Upper Cam Tracks	F-365	3115365	55
LUBE FELT / HEAD IPT1" EU1 FLAT	Upper Cam Tracks	F-426	3115426	55
ROTARY SHAFT SEAL	Upper Cam Tracks	F-996	2147996	55
LUBE FELT FOR PUNCH SHANK (WIPING FELT)	Upper Cam Tracks	F-612	3101612	55

## PT-3090

Part	Category	Part #	OEM	Page
TOOTHED BELT FOR F-O-M DRIVE	Drive Components	F-1605	3751605	56
BASE PLATE FOR EJECTOR	Lower Cam Tracks	F-002	3109002	56
WEAR PLATE - EJECTOR	Lower Cam Tracks	F-003	3109003	56
LEDGE CAM FOR EJECTION - IPT 1"	Lower Cam Tracks	F-036	407036	56
FEATHER KEY	Lower Cam Tracks	F-05	3781905	56
FASTENING FOR GUIDE COLUMNS	Lower Cam Tracks	F-061	3114061	56
8MM FILL CAM - IPT 19	Lower Cam Tracks	F-482	3113482	56
10MM FILL CAM - IPT 19	Lower Cam Tracks	F-483	3113483	56
10MM FILL CAM - IPT 1"	Lower Cam Tracks	F-110	3211040110	56
12MM FILL CAM - IPT 19	Lower Cam Tracks	F-484	3113484	56
14MM FILL CAM EU 1"	Lower Cam Tracks	F-067	3132067	56
16MM FILL CAM - IPT 19	Lower Cam Tracks	F-485	3111040116	56
25MM FILL CAM - IPT 1"	Lower Cam Tracks	F39-25		56
GRIP LEDGE - IPT 1"	Lower Cam Tracks	F-303	3133033	56
GRUB SCREW FOR MOMENT SUPPORT	Lower Cam Tracks	F-323	3112323	56
LOCK TENSION JACK COUNTER BEARING	Lower Cam Tracks	F-205		57
GUIDE COLUMN	Lower Cam Tracks	F-375	3108375	57
EJECTION / DOSING RAMP	Lower Cam Tracks	F-387	3108387	57
SHIM FOR INJECTOR IPT	Lower Cam Tracks	F-367	3106367	57
SQUARE STEEL	Lower Cam Tracks	F-537	3110537	57
WEAR PLATE- EJECTOR	Lower Cam Tracks	F-567	3111567	57
DOSING LEDGE METERING INSERT	Lower Cam Tracks	F-580	3110580	57
LOWERING CAM - OUTSIDE - IPT 19	Lower Cam Tracks	F-586	3110586	57
DOSING LEDGE METERING INSERT	Lower Cam Tracks	F-594	3105940	57
GUIDE - METERING HEAD	Lower Cam Tracks	F-730	3109730	57
INSIDE GRIP LEDGE - IPT 19	Lower Cam Tracks	F-733	3109733	57
INLET GRIP LEDGE - IPT 1"	Lower Cam Tracks	F-755	3109755	57
SCRAPER A 10x18x8 / 5	Lower Cam Tracks	F-759	2148759	57
UPPER LOWERING CAM - IPT 19	Lower Cam Tracks	F-762	3109762	57
GRIP LEDGE - EJECTOR - IPT19	Lower Cam Tracks	F-799	3109799	57
HUB FLANGE	Lower Cam Tracks	F-873	3109873	58
GRIP LEDGE - EU 19	Lower Cam Tracks	F-904	3100904	58
SPRING WASHER	Lower Cam Tracks	F-950	2142950	58
RETAINING PIECE - HOLDING LEDGE - SHORT	Lower Cam Tracks	F-956	3108956	58
RETAINING PIECE - HOLDING LEDGE - LONG	Lower Cam Tracks	F-957	3108957	58
TRANSITION CAM - MAIN COMPRESSION	Lower Cam Tracks	F-967	3108967	58
TRANSITION CAM - PRECOMPRESSION	Lower Cam Tracks	F-968	3108968	58
6MM FILL CAM - IPT 1"	Lower Cam Tracks	F-3541	3123541	58

# PT-3090 (cont.)

Part	Category	Part #	OEM	Page
12MM FILL CAM - IPT 1"	Lower Cam Tracks	FD39-554		58
12MM FILL CAM - EU 1	Lower Cam Tracks	F-066		58
14MM FILL CAM - IPT 19	Lower Cam Tracks	F-457	3113457	58
LUBE TUBE FOR CAM BRACKET BOTTOM	Lower Cam Tracks	F-805	3108805	58
16MM FILL CAM EU 1"	Lower Cam Tracks	F-068		58
18MM FILL CAM - IPT 19	Lower Cam Tracks	F-486	3113486	58
20MM FILL CAM - IPT 1	Lower Cam Tracks	F-556	3113556	58
LOWER CAM BODY	Lower Cam Tracks	F-979	3107979	59
PRESSING RAIL - METERING HEAD- IPT 1"	Lower Cam Tracks	F-951	32110401951	59
LOWER CAMS - IPT 19	Lower Cam Tracks	F-419	3502419	59
DOSING HEAD - IPT 19	Lower Cam Tracks	F-378	3502378	59
EJECTION CAM - IPT 19	Lower Cam Tracks	F-385	3502385	59
BOTTOM CAM CARRIER	Lower Cam Tracks	F-238	3503238	59
PRESSURE ROLL W/O BEARING	Pressure Components	F-89	3114089	59
PRESSURE ROLL W/BEARING	Pressure Components	F-89/WB	3114089	59
BEARING FOR PRESSURE ROLL	Pressure Components	SG-513-BRG		59
SNAP RING FOR PRESSURE ROLL BEARING	Pressure Components	SG-513-SR		59
SLIDE IN BRONZE SEGMENT - 16MM	Product Control	F-1464		59
SLIDE IN BRASS SEGMENTS - 25MM	Product Control	F-1465		59
SEGMENT STOPPER	Product Control	F-466	3131466	59
TABLET SCRAPER AIR REJECT	Product Control	F-479	3123479	59
F-O-M BASE PAN - SPRING LOADED INSERT DESIGN	Product Control	F-735-1		59
FEEDER PAN ASSEMBLY - SPRING LOADED	Product Control	F-735/1		60
FEEDER PAN INSERT	Product Control	F-735-2		60
F-O-M SCRAPER	Product Control	F-889	3112889	60
TAIL OVER DIE	Product Control	F-940	3109940	60
F-O-M BASE PLATE FOR BRONZE SEGMENT	Product Control	F-747	313747	60
FILLING WHEEL W/FLAT RODS - BRONZE	Product Control	F-464	3501464, 3501464C	60
METERING WHEEL W/FLAT RODS	Product Control	F-465	3501465, 3501465C	60
REVERSE DOSING WHEEL W/FLAT RODS	Product Control	F-66	3501466C	60
1/4TURN PIN FOR FEEDER PAN	Product Control	F-735-3		60
F-O-M BASE PAN	Product Control	F-735	3109735	60
SPRING FOR FEEDER PAN	Product Control	F-735-4		60
SCRAPER BAR - BRONZE	Product Control	F-416	3110416	60
49 STATION TURRET ASSEMBLY	Turret	F39-49T/A		60
61 STATION TURRET ASSEMBLY	Turret	F39-61T/A	3505719	60
61 STATION TURRET ASSEMBLY & ALL CAMS - IPT 19	Turret	F39-61T-CA		60
73 STATION TURRET ASSEMBLY	Turret	F39-73T/A		61
73 STATION TURRET ASSEMBLY AND ALL CAMS - IPT 19	Turret	F39-73T-CA		61
DIE LOCK SCREW	Turret Hardware	DL-12	1106012	61
DIE LOCK SCREW - EXTENDED TIP	Turret Hardware	DL-8	52411232002	61
ROTOR SHAFT	Turret Hardware	F-027	407027	61
COMPRESSION SPRING - TURRET BOLT	Turret Hardware	F-028	F407028	61
ROTOR SHAFT MUSHROOM HEAD	Turret Hardware	F-029	407029	61
SPRING COVER	Turret Hardware	F-187	3108187	61
SPRING BOLT	Turret Hardware	F-188	3108188	61
O-RING - PUNCH RETAINER	Turret Hardware	F-505	3752505	61
PUNCH GUIDE SEAL 1" UNKEYED ALUMINUM CASING	Turret Hardware	F-549	3115549	61
GUIDE KEY	Turret Hardware	F-588	3109588, 3115597	61
GUIDE BLOCK FOR LARGE PRESSURE SCREW	Turret Hardware	F-597	3115597	61
PUNCH RESTRAINER 19	Turret Hardware	F-605	3752605	61
PUNCH GUIDE SEAL - 1"	Turret Hardware	F-624	2214624	61
SCREW COMPRESSION SPRING (length=125mm)	Turret Hardware	F-905	3751905	62
FINDER THREADED PIN FOR ROTOR SHAFT	Turret Hardware	F-936	3119936	62
CLAMP FOR PUNCH RESTRAINER 19MM	Turret Hardware	F-86	3115486	62
STRAIGHT PIN	Turret Hardware	F-294	2143294	62
DOSING ELEMENT ASSEMBLY, 10 CMM	Upper Cam Tracks	F-030	3700332	62
DOSING ELEMENT - ASSEMBLY 20 CMM	Upper Cam Tracks	F-031	3700334	62
DOSING ELEMENT - ASSEMBLY 50 CMM	Upper Cam Tracks	F-032	3700335	62
HINGE PIN 4MMx50MM	Upper Cam Tracks	F-421	3104421	62
HOLDING RAIL FOR LUBRICATION AREA IPT 19	Upper Cam Tracks	F-044-P	3111044-P	62
COVER PLATE	Upper Cam Tracks	F-099		62
HOLDING BAR W/O SHAFT LUBE - DELRIN - IPT 1"	Upper Cam Tracks	F-162-P	32310401621	62
HOLDING BAR FOR PUNCH REMOVAL - DELRIN - IPT 1"	Upper Cam Tracks	F-163-P	32310401631	62
HOLDING BAR FLAT PUNCH - DELRIN - IPT 1"	Upper Cam Tracks	F-165-P	32310401651	62
HOLDING BAR FOR SHAFT LUBE - DELRIN - IPT 1"	Upper Cam Tracks	F-168-P	32310401681	62
HOLDING BAR FOR PUNCH HEAD - DELRIN - IPT 1"	Upper Cam Tracks	F-169-P	32310401691	62
COVER FOR HOLDING LEDGE - DELRIN - IPT 19 OR IPT 1"	Upper Cam Tracks	F-171-P	33330401713	63
COVER PLATE - PUNCH REMOVAL - DELRIN	Upper Cam Tracks	F-172-P	33330401723	63
UPPER LIFTING CAM IPT 1"	Upper Cam Tracks	F-180	32110401801	63



## PT-3090 (cont.)

Part	Category	Part #	OEM	Page
UPPER LOWERING CAM - DELRIN - IPT 1"	Upper Cam Tracks	F-190-P	32310401901	63
UPPER PUNCH LIFTING CAM IPT 19	Upper Cam Tracks	F-193	3116193	63
LUBE FELT FOR FLAT CAMS IPT19, EU19	Upper Cam Tracks	F-365	3115365	63
LUBE FELT / HEAD IPT1"EU1 FLAT	Upper Cam Tracks	F-426	3115426	63
UPPER PUNCH LIFTING CAM IPT 19	Upper Cam Tracks	F-520	3109520	63
PUNCH SHAFT FELT HOLDER	Upper Cam Tracks	F-753		63
SILICON PLUG FOR TOP CAM	Upper Cam Tracks	F-533	3109533	63
ROTOR BEARING	Upper Cam Tracks	F-589	3100589	63
FELT HOLDER FOR SHAFT LUBRICATION	Upper Cam Tracks	F-673	31430401673	63
PLASTIC HOLDING LEDGE - PUNCH REMOVAL	Upper Cam Tracks	F-714	3117714	63
HOLDING LEDGE - IPT 19	Upper Cam Tracks	F-728	3109728	63
HOLDING LEDGE- IPT 1"	Upper Cam Tracks	F-035	407035	63
PUNCH HEAD FELT HOLDER	Upper Cam Tracks	F-763		64
HOLDING RAIL - PRE&MAIN PRESSURE - IPT 19	Upper Cam Tracks	F-763-P	3109763-P	64
O-RING	Upper Cam Tracks	F-793	2147793	64
SHIM RING FOR CAM CARRIER TOP	Upper Cam Tracks	F-819	3108819	64
ADJUSTABLE CLAMPING LEVER	Upper Cam Tracks	F-835	2143835	64
ROTARY SHAFT SEAL	Upper Cam Tracks	F-996	2147996	64
FELT HOLDER/HEAD LUBE DIA 19 FLAT CAMS	Upper Cam Tracks	F-364	3115364	64
KNURLED SCREW - M6x10	Upper Cam Tracks	F-408	2143408	64
SET SCREW - CAMBODY	Upper Cam Tracks	F-570		64
TOP CAM CARRIER FOR DIETABLE	Upper Cam Tracks	F-319	3503319	64
UPPER CAM ASMBLY-INNER/OUTER SHAFT & HEAD-IPT 19	Upper Cam Tracks	F-142		64
LUBE FELT FOR PUNCH SHANK (WIPING FELT)	Upper Cam Tracks	F-612	3101612	64
UPPER RAISING CAM - STEEL- IPT 19	Upper Cam Tracks	F-218	3116218	64
DOWEL PIN 12 M6x0	Upper Cam Tracks	F-739	2142739	64
SCREW M10x40	Upper Cam Tracks	F-579	2143579	64
HOLDING BAR FOR PUNCH REMOVAL IPT 19	Upper Cam Tracks	F-530-P	3109530-P	65
HOLDING RAIL FOR PUNCH HEAD LUBRICATION - IPT 19	Upper Cam Tracks	F-768-P	3109768-P	65
PUNCH HEAD LUBE FELT - IPT 1"	Upper Cam Tracks	F-761	32710401761	65
UPPER CAM BODY	Upper Cam Tracks	F-217	3110217	65
PRESSURE LEDGE PRE & MAIN PRESSURE	Upper Cam Tracks	F-391	3108391	65

## PT-3200

Part	Category	Part #	OEM	Page
TOOTHED BELT FOR F-O-M DRIVE	Drive Components	F-1605	3751605	66
BASE PLATE FOR EJECTOR	Lower Cam Tracks	F-002	3109002	66
WEAR PLATE - EJECTOR	Lower Cam Tracks	F-003	3109003	66
LEDGE CAM FOR EJECTION - IPT 1"	Lower Cam Tracks	F-036	407036	66
FASTENING FOR GUIDE COLUMNS	Lower Cam Tracks	F-061	3114061	66
10MM FILL CAM - IPT 1"	Lower Cam Tracks	F-110	3211040110	66
10MM FILL CAM - IPT 19	Lower Cam Tracks	F-483	3113483	66
12MM FILL CAM - IPT 19	Lower Cam Tracks	F-484	3113484	66
12MM FILL CAM - IPT 1"	Lower Cam Tracks	FD39-554		66
14MM FILL CAM - IPT 19	Lower Cam Tracks	F-457	3113457	66
16MM FILL CAM - IPT 19	Lower Cam Tracks	F-485	3111040116	66
GRUB SCREW FOR MOMENT SUPPORT	Lower Cam Tracks	F-323	3112323	66
WEAR PLATE- EJECTOR	Lower Cam Tracks	F-567	3111567	66
LOWERING CAM - OUTSIDE - IPT 19	Lower Cam Tracks	F-586	3110586	66
DOSING LEDGE METERING INSERT	Lower Cam Tracks	F-594	3105940	66
SHIM FOR INJECTOR IPT	Lower Cam Tracks	F-367	3106367	67
EJECTION / DOSING RAMP	Lower Cam Tracks	F-387	3108387	67
GUIDE - METERING HEAD	Lower Cam Tracks	F-730	3109730	67
INSIDE GRIP LEDGE - IPT 19	Lower Cam Tracks	F-733	3109733	67
INLET GRIP LEDGE - IPT 1"	Lower Cam Tracks	F-755	3109755	67
GRIP LEDGE - EJECTOR - IPT19	Lower Cam Tracks	F-799	3109799	67
HUB FLANGE	Lower Cam Tracks	F-873	3109873	67
LOWER CAM BODY	Lower Cam Tracks	F-979	3107979	67
PRESSING RAIL - METERING HEAD- IPT 1"	Lower Cam Tracks	F-951	32110401951	67
PRESSURE ROLL W/O BEARING	Pressure Components	F-89	3114089	67
PRESSURE ROLL W/BEARING	Pressure Components	F-89/WB	3114089	67
SCRAPER BAR - BRONZE	Product Control	F-416	3110416	67
F-O-M BASE PAN - SPRING LOADED INSERT DESIGN	Product Control	F-735-1		67
FEEDER PAN INSERT	Product Control	F-735-2		67
TAIL OVER DIE	Product Control	F-940	3109940	67
1/4 TURN PIN FOR FEEDER PAN	Product Control	F-735-3		68
F-O-M BASE PAN	Product Control	F-735	3109735	68

## PT-3200 (cont.)

Part	Category	Part #	OEM	Page
SPRING FOR FEEDER PAN	Product Control	F-735-4		68
O-RING - PUNCH RETAINER	Turret Hardware	F-505	3752505	68
PUNCH RESTRAINER 19	Turret Hardware	F-605	3752605	68
PUNCH GUIDE SEAL - 1"	Turret Hardware	F-624	2214624	68
DOWEL PIN 12 M6x40	Turret Hardware	F-739	2142739	68
SCREW M10x40	Turret Hardware	F-579	2143579	68
HOLDING LEDGE- IPT 1"	Upper Cam Tracks	F-035	407035	68
HOLDING RAIL FOR LUBRICATION AREA IPT 19	Upper Cam Tracks	F-044-P	3111044-P	68
UPPER PUNCH LIFTING CAM IPT 19	Upper Cam Tracks	F-193	3116193	68
LUBE FELT FOR FLAT CAMS IPT19 ,EU19	Upper Cam Tracks	F-365	3115365	68
PRESSURE LEDGE PRE & MAIN PRESSURE	Upper Cam Tracks	F-391	3108391	68
LUBE FELT / HEAD IPT1"EU1	Upper Cam Tracks	F-426	3115426	68
UPPER PUNCH LIFTING CAM IPT 19	Upper Cam Tracks	F-520	3109520	68
PLASTIC HOLDING LEDGE - PUNCH REMOVAL	Upper Cam Tracks	F-714	3117714	69
HOLDING LEDGE - IPT 19	Upper Cam Tracks	F-728	3109728	69
UPPER LOWERING CAM - IPT 19	Upper Cam Tracks	F-762	3109762	69
HOLDING RAIL - PRE&MAIN PRESSURE - IPT 19	Upper Cam Tracks	F-763-P	3109763-P	69
TRANSITION CAM - MAIN COMPRESSION	Upper Cam Tracks	F-967	3108967	69
TRANSITION CAM - PRECOMPRESSION	Upper Cam Tracks	F-968	3108968	69
ROTARY SHAFT SEAL	Upper Cam Tracks	F-996	2147996	69
LUBE FELT FOR PUNCH SHANK (WIPING FELT)	Upper Cam Tracks	F-612	3101612	69
UPPER RAISING CAM - STEEL- IPT 19	Upper Cam Tracks	F-218	3116218	69
HOLDING BAR FOR PUNCH REMOVAL IPT 19	Upper Cam Tracks	F-530-P	3109530-P	69
HOLDING RAIL FOR PUNCH HEAD LUBRICATION - IPT 19	Upper Cam Tracks	F-768-P	3109768-P	69
PUNCH HEAD LUBE FELT - IPT 1"	Upper Cam Tracks	F-761	32710401761	69
UPPER CAM BODY	Upper Cam Tracks	F-217	3110217	69

## PT-3200i

Part	Category	Part #	OEM	Page
EJECTION / DOSING RAMP	Lower Cam Tracks	F-387	3108387	70
SLIDE IN BRONZE SEAL 16MM	Product Control	F-39	3128639	70
FEEDER PAN	Product Control	F-5	3128805	70
SLIDE IN BRONZE SEAL 11MM	Product Control	F-636	3128636	70
SLIDE IN BRONZE SEAL 25MM	Product Control	F-40	3128640	70

### Lower Cam Tracks



12MM FILL CAM - EU 1"  
F10-598 | OEM: 3105598

### Lower Cam Tracks



WEAR PLATE  
F10-915 | OEM: 3113915

### Lower Cam Tracks



12MM FILL CAM - IPT 19  
F-691 | OEM: N/A

### Product Control



TOOTHED BELT FOR F-O-M  
F-305 | OEM: 3795305

### Turret Hardware



PUNCH SEALS LOWER "B"  
F-546 | OEM: 3115546

### Turrets



17 STATION TURRET ASSEMBLY\*  
F10-17T | OEM: N/A

### Upper Cam Tracks



OUTER SHANK FELT 66.3x26x5  
F-6487 | OEM: 3126487

\*Turret Assemblies come with Die Locks, Seals, Retainers with hardware, Die Driving Rod, Die Seat Cleaner, Die Insertion Ring, and Cleaning Brush.

Lower Cam Tracks



WEAR PLATE  
F10-915 | OEM: 3113915

Lower Cam Tracks



THRUST PIECE (EJECTION RAMP)  
F12-765 | OEM: 3113765

Lower Cam Tracks



TIGHT PUNCH CONTROL DOSING  
F12-816 | OEM: 3113816

Lower Cam Tracks



COLLECTOR RAIL - EU 1  
F-335 | OEM: 3113735

Lower Cam Tracks



TRANSITION CAM - MAIN COMPRESSION  
F-3723 | OEM: 3113723

Lower Cam Tracks



BASE PLATE FOR EJECTOR  
F-3900 | OEM: 3113900

Lower Cam Tracks



COLLECTOR RAIL - EU 1  
F-838 | OEM: 3114838

Lower Cam Tracks



PRESSURE LEDGE  
F-888 | OEM: 3113888

Lower Cam Tracks



12MM FILL CAM - EU-B  
F-746 | OEM: 3114746

Lower Cam Tracks



14MM FILL CAM - EU 19  
F-809 | OEM: 3115809

Lower Cam Tracks



6MM FILL CAM - EU-19  
F-744 | OEM: 3114744

Lower Cam Tracks



8MM FILL CAM EU-B  
F-745 | OEM: 3114745

Lower Cam Tracks



10MM FILL CAM EU19  
F-807 | OEM: 3114807

Lower Cam Tracks



SHIMS FOR EJECTOR PLATE  
F-59 | OEM: 3113959

Lower Cam Tracks

PHOTO NOT AVAILABLE

TRANSFER CAM FOR PRE & MAIN  
PRESSURE STATIONS  
F-4691 | OEM: N/A



Lower Cam Tracks

PHOTO NOT AVAILABLE

DOSING HEAD EU1-441  
F-998 | OEM: N/A

Pressure Components



PRESSURE ROLL W/O BEARING  
F-89 | OEM: 3114089

Pressure Components



PRESSURE ROLL W/BEARING  
F-89/WB | OEM: 3114089

Product Control



11MM SLIDE IN BRONZE SEAL  
F-191 | OEM: 3136191

Product Control



16MM SLIDE IN BRONZE SEAL  
F-192 | OEM: 3136192

Product Control



RECEIVER BLOCK  
F-3836 | OEM: N/A

Product Control



11MM SLIDE IN SEAL - PEEK  
F-61 | OEM: N/A

Product Control



25MM SLIDE IN SEAL - PEEK  
F-794 | OEM: 9178794

Product Control



F-O-M BASE PLATE FOR BRONZE SEAL  
F-90 | OEM: 3136190

Product Control



COVER PLATE  
F-96 | OEM: 3117696

Product Control



FILLING WHEEL - PLOW  
F-464/1 | OEM: N/A

Product Control



REVERSE DOSING WHEEL W/FLAT RODS  
- PLOW  
F-66/1 | OEM: N/A

Product Control



F-O-M BASE PLATE FOR BRONZE SEAL  
F-711 | OEM: 3113711

Product Control



25MM SLIDE IN BRONZE SEAL  
F-93 | OEM: 3136193

Product Control



25MM SLIDE IN SEAL - TITANIUM  
F-93/T | OEM: N/A

Product Control



16 MM SLIDE IN PEEK SEAL  
F-765 | OEM: 9178765

Turrets



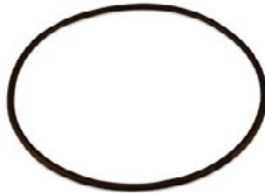
24 STATION TURRET ASSEMBLY\*  
F12I-24T/A | OEM: N/A  
\*See page 19

Turrets



24 STATION TURRET - EU B  
F12IE-24T | OEM: N/A

Turret Hardware



PUNCH RESTRAINER O-RING 165X3  
F-106 | OEM: 3722106

Turret Hardware



HOLD DOWN LEDGE - EU 1  
F-4836 | OEM: 3114836

Turret Hardware



PUNCH GUIDE SEAL - 1" - UNKEYED  
F-624 | OEM: 2214624

Turret Hardware



PUNCH RESTRAINER 19  
F-406 | OEM: 3733406

Turret Hardware



PUNCH GUIDE SEAL - 3/4"/19 MM  
F-667 | OEM: 2147667

Turret Hardware

PHOTO NOT AVAILABLE

CROSS ROLLER BEARING  
F-606 | OEM: N/A

Upper Cam Tracks



PUSH DOWN RAIL PRE-MAIN COMPRESSION  
F-01 | OEM: N/A

Upper Cam Tracks



DWELL CAM FOR PUNCH  
F-06/1 | OEM: 3117707

Upper Cam Tracks



UPPER LOWERING CAM WITH HEAD LUBE - EU 19  
F-2485 | OEM: 3112485

Upper Cam Tracks



UPPER RAISING CAM - EU 1" - STEEL  
F-356 | OEM: 3118356

Upper Cam Tracks



TRANSITION CAM - MAIN COMPRESSION  
F-3723 | OEM: 3113723

Upper Cam Tracks



PRE-MAIN DWELL CAM - EU 1"  
F-701 | OEM: 3117701

Upper Cam Tracks



UPPER LOWERING CAM WITH HEAD LUBE  
- EU 1" - PLASTIC  
F-84 | OEM: 3112484

Upper Cam Tracks



LUBE FELT FOR PUNCH SHANK  
(WIPING FELT)  
F-612 | OEM: 3101612

Upper Cam Tracks



PRESSURE LEDGE- DELRIN  
F-888-P | OEM: 3113888P

Upper Cam Tracks

PHOTO NOT AVAILABLE

UPPER LOWERING CAM WITH HEAD LUBE  
- EU1-441-PLASTIC  
F-825 | OEM: 3118825

Upper Cam Tracks

PHOTO NOT AVAILABLE

UPPER RAISING CAM - EU1-441-STEEL  
F-643 | OEM: 3118643

Upper Cam Tracks

PHOTO NOT AVAILABLE

LOWER PRESSURE RAIL EU1-441  
F-21 | OEM: 3114521

\*Turret Assemblies come with Die Locks, Seals, Retainers with hardware, Die Driving Rod, Die Seat Cleaner, Die Insertion Ring, and Cleaning Brush.

Lower Cam Tracks



WEIGHT ADJUSTER  
F-086 | OEM: 3134086

Lower Cam Tracks



LEAD PIECE - EJECTOR - 32 STATION  
F-374 | OEM: 3113374

Lower Cam Tracks



12MM FILL CAM EU 19  
F-444 | OEM: 3111444

Lower Cam Tracks



6MM FILL CAM EU 19  
F-898 | OEM: 3110898

Lower Cam Tracks



16MM FILL CAM EU 19  
F-899 | OEM: 3110899

Lower Cam Tracks



18MM FILL CAM - EU 19  
F-900 | OEM: 3110900

Lower Cam Tracks



14MM FILL CAM IPT 1"  
F-4434 | OEM: 3114434

Lower Cam Tracks



12MM FILL CAM IPT 1"  
F-4433 | OEM: 3114433

Lower Cam Tracks



10MM FILL CAM IPT 1"  
F-432 | OEM: 3114432

Lower Cam Tracks



8MM FILL CAM IPT-19  
F-410 | OEM: 3114410

Lower Cam Tracks



HOLDING LEDGE FOR LOWER CAMS IPT 19  
F-919 | OEM: 3110919

Lower Cam Tracks



HOLD DOWN LEDGE - IPT 19  
F-929 | OEM: 3110929

Lower Cam Tracks

PHOTO NOT  
AVAILABLE

LOWER CAM BODY  
F-978 | OEM: 3111978

Lower Cam Tracks



HOLD DOWN LEDGE IPT 1"  
F-017 | OEM: 3112017

Lower Cam Tracks



FILLING CAM - 8MM - EU19  
F-858 | OEM: 3110858



Lower Cam Tracks

PHOTO NOT AVAILABLE

FILLING CAM - 12MM - EU1-441  
F-254 | OEM: N/A

Lower Cam Tracks



FILLING CAM - 10MM - EU19  
F-614 | OEM: 3110614

Lower Cam Tracks

PHOTO NOT AVAILABLE

FILL CAM 10MM FS12  
F-264 | OEM: N/A

Pressure Components



PRESSURE ROLL W/O BEARING  
F-89 | OEM: 3114089

Pressure Components



PRESSURE ROLL W/BEARING  
F-89/WB | OEM: 3114089

Pressure Rolls & Components



S.H. SET SCREW  
N-6833 | OEM: N/A

Product Control



SLIDE IN BRONZE SEAL FOR STANDARD  
F-O-M TABLETS UP TO 11MM  
F-34 | OEM: 3127034

Product Control



SLIDE IN BRONZE SEAL FOR STANDARD  
F-O-M TABLETS UP TO 16MM  
F-35 | OEM: 3127035

Product Control



SLIDE-IN BRONZE SEAL FOR STANDARD  
F-O-M TABLETS UP TO 25MM  
F-36 | OEM: 3127036

Product Control



SCRAPER BAR - BRONZE  
F-361 | OEM: 3106361C

Product Control



F-O-M BASE PLATE FOR BRONZE SEAL  
F-7032 | OEM: 3127032

Product Control

PHOTO NOT AVAILABLE

DRIVE SHAFT - F-O-M  
F-845 | OEM: N/A

Product Control



FILLING WHEEL - PLOW  
F-464/1 | OEM: 3501464

Product Control



REVERSE DOSING WHEEL W/FLAT RODS  
- PLOW  
F-66/1 | OEM: N/A

Product Control



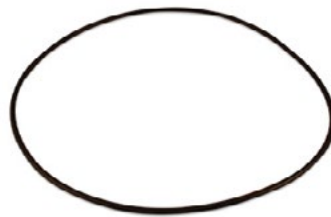
SLIDE IN PEEK SEAL FOR STANDARD  
F-O-M TABLETS UP TO 25MM  
F-4636 | OEM: 3134636

Product Control



SLIDE IN PEEK SEAL FOR STANDARD F-O-M TABLETS UP TO 11MM  
F-4634 | OEM: 3134634

Turret Hardware



PUNCH RESTRAINER O-RING 400X8  
F-1205 | OEM: 3761205

Turret Hardware



PUNCH GUIDE SEAL - 1"  
F-624 | OEM: 2214624

Turret Hardware



PUNCH GUIDE SEAL - 3/4"/19MM  
F-667 | OEM: 2147667

Turret Hardware



PUNCH GUIDE SEAL - 3/4"/19MM-FDA  
F-667/1 | OEM: 2147667

Turret Hardware



SOCKET HEAD SET SCREW  
N-6833 | OEM: N/A

Turret Hardware



PUNCH RESTRAINER 19  
F-705 | OEM: 3772705

Turrets



29 STATION TURRET ASSEMBLY\*  
F29-29T/A | OEM: N/A

Turrets



36 STATION TURRET ASSEMBLY\*  
F29-36T/A | OEM: N/A

Upper Cam Tracks



LUBE FELT/HEAD IPT 1" EU 1" FLAT  
F-026 | OEM: 3133026

Upper Cam Tracks



LUBE FELT FOR FLAT CAMS IPT19, EU19  
F-365 | OEM: 3115365

Upper Cam Tracks



LUBE FELT FOR PUNCH SHANK  
F-612 | OEM: 3101612

Upper Cam Tracks



HEAD LUBE CAM - EU 19  
F-390 | OEM: 3118390

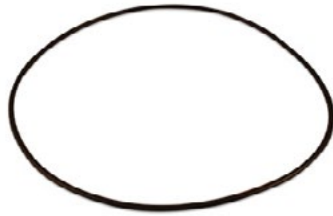
\*Turret Assemblies come with Die Locks, Seals, Retainers with hardware, Die Driving Rod, Die Seat Cleaner, Die Insertion Ring, and Cleaning Brush.

Lower Cam Tracks



8MM FILL CAM - EU 19  
F-806 | OEM: 3778806

Turret Hardware



PUNCH RESTRAINER O-RING 400 X 8  
F-1205 | OEM: 3761205

Turret Hardware



PUNCH SEALS LOWER "B"  
F-546 | OEM: 3115546

Turret Hardware



PUNCH GUIDE SEAL 1" UNKEYED  
ALUMINUM CASING  
F-549 | OEM: 3115549

Turret Hardware



PUNCH RESTRAINER 19  
F-705 | OEM: 3772705

Upper Cam Tracks



LUBE FELT/HEAD IPT1" EU1" FLAT  
F-026 | OEM: 3133026

Upper Cam Tracks



LUBE FELT FOR FLAT CAMS IPT 19, EU 19  
F-463 | OEM: 3119463

Upper Cam Tracks



HOLDING LEDGE PRE/MAIN COMPR.  
IPT 19  
F-723 | OEM: 3117723

Upper Cam Tracks



PLASTIC PRESSURE LEDGE PRE-MAIN  
COMPRESSION  
F-637 | OEM: 3117637

Upper Cam Tracks



OUTER SHANK FELT 66.3X26X5  
F-6487 | OEM: 3126487

Lower Cam Tracks



20MM FILL CAM EU 1"-441 FOR  
MAGNESIUM STEARATE SYSTEM  
F-8706 | OEM: 3138706

Lower Cam Tracks



18MM FILL CAM - EU 19  
F-900 | OEM: 3110900

Lower Cam Tracks



10 MM FILL CAM - EU 19  
F-614 | OEM: 3110614

Lower Cam Tracks



12MM FILL CAM - EU1-441  
F-254 | OEM: N/A

Lower Cam Tracks



6MM FILL CAM - EU1-441  
F-440 | OEM: 3114440

Turrets



36 STATION TURRET  
F22-36T | OEM: N/A

Upper Cam Tracks



LUBE FELT FOR PUNCH SHANK  
(WIPING FELT)  
F-612 | OEM: 3101612



Lower Cam Tracks



WEAR PLATE - EJECTOR  
F-003 | OEM: 3109003

Lower Cam Tracks



PULL DOWN CAM - DOSING  
F-034 | OEM: 3133034

Lower Cam Tracks



GRIP LEDGE FOR DOSING  
F-29 | OEM: 3133029

Lower Cam Tracks



PULL DOWN CAM  
F-30 | OEM: 3133030

Lower Cam Tracks



EJECTION/DOSING RAMP  
F-387 | OEM: 3108387

Lower Cam Tracks



WEAR PLATE  
F39I-002 | OEM: N/A

Lower Cam Tracks



14MM FILL CAM IPT 1"  
F-458 | OEM: 3113458

Lower Cam Tracks



18MM FILL CAM IPT 1"  
F-895 | OEM: 3112895

Lower Cam Tracks



8MM FILL CAM - EU 19  
F-07 | OEM: N/A

Lower Cam Tracks



GUIDE PIECE  
F-353 | OEM: 9138353

Lower Cam Tracks



GRIP LEDGE - EJECTOR - IPT19  
F-799 | OEM: 3109799

Lower Cam Tracks



8MM FILL CAM - EU 19  
F-806 | OEM: 3778806

Lower Cam Tracks



18MM FILL CAM - EU 1"  
F-069 | OEM: N/A

Lower Cam Tracks



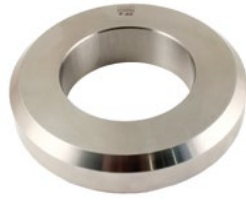
10MM FILL CAM - EU 1"  
F-065 | OEM: N/A

Lower Cam Tracks



14MM FILL CAM - EU 19  
F-566 | OEM: N/A

Pressure Components



PRESSURE ROLL  
F-89/1 | OEM: 3114089

Pressure Components



PRESSURE ROLLER W/BEARING  
F-89/1WB | OEM: 3114089

Pressure Components



BEARING FOR PRESSURE ROLL  
SG-513-BRG | OEM: N/A

Pressure Components



SNAP RING FOR PRESSURE ROLL BEARING  
SG-513-SR | OEM: N/A

Product Control



ROTARY VANE  
F-096/1 | OEM: N/A

Product Control



ROTARY VANE  
F-096/2 | OEM: N/A

Product Control



OVAL PANE FOR FEEDING HOPPER 92 MM  
F-292 | OEM: 3116292

Product Control



16MM BRONZE INSERT  
F-39 | OEM: 3128639

Product Control



STAINLESS STEEL DISTRIBUTING WHEEL  
F-459 | OEM: 3512495

Product Control



FEEDER PAN  
F-5 | OEM: 3128805

Product Control



SLIDE IN BRONZE SEAL (OPEN) 11MM  
F-636 | OEM: 3128636

Product Control



STAINLESS STEEL FILLING WHEEL  
F-696 | OEM: 3510696

Product Control



SCRAPER A 6X12X6/4  
F-907 | OEM: N/A

Product Control



TAIL OVER DIE  
F-940 | OEM: 3109940

Product Control



F-0-M BASE PLATE  
F-803 | OEM: 3128036

Product Control



F-O-M BASE PLATE FOR BRONZE SEGMENT  
F-747 | OEM: 313747

Product Control



SLIDE IN BRONZE SEAL (OPEN) 25MM  
F-40 | OEM: 3128640

Product Control



FILLING WHEEL - PLOW  
F-464/1 | OEM: 3501464

Product Control



REVERSE DOSING WHEEL W/FLAT RODS - PLOW  
F-66/1 | OEM: N/A

Product Control



FILLING PLATE FOR BRONZE SEALING SEGMENT  
F-474 | OEM: 3131474

Product Control



SCRAPER BAR - BRONZE  
F-416 | OEM: 3110416

Product Control

PHOTO NOT AVAILABLE

11MM OPEN SLIDE IN TEFLON SEGMENT  
F-9205 | OEM: 7009205

Product Control



11MM CLOSED SLIDE IN SEAL  
F-1462 | OEM: N/A

Product Control

PHOTO NOT AVAILABLE

TABLET TAKE OFF - VACUUM SCRAPER ASSEMBLY  
F-877-PF | OEM: N/A

Turret



FETTE 49 STATION TURRET ASSEMBLY\*  
F391-49T/A | OEM: N/A  
\*See page 28

Turret



FETTE 73 STATION TURRET ASSEMBLY\*  
F391-73T/A | OEM: N/A  
\*See page 28

Turret Hardware



O-RING D - PUNCH RETAINER  
F-505 | OEM: 3752505

Turret Hardware



PUNCH RESTRAINER 19  
F-605 | OEM: 3752605

Turret Hardware



PUNCH GUIDE SEAL - 1"  
F-624 | OEM: 2214624

Turret Hardware



PUNCH GUIDE SEAL - 3/4"/19MM  
F-667 | OEM: 2147667

Upper Cam Tracks



LUBE FELT/HEAD IPT 1" EU 1" FLAT  
F-026 | OEM: 3133026

Upper Cam Tracks



WIPING FELT  
F-28 | OEM: 3133028

Upper Cam Tracks



LUBE FELT FOR FLAT CAMS IPT 19, EU 19  
F-463 | OEM: 3119463

Upper Cam Tracks



PLASTIC HOLDING LEDGE - PUNCH  
REMOVAL  
F-714 | OEM: 3117714

Upper Cam Tracks



OUTER SHANK FELT 66.3X26X5  
F-6487 | OEM: 3126487

Upper Cam Tracks



LUBE FELT FOR PUNCH SHANK (WIPING  
FELT)  
F-612 | OEM: 3101612

Upper Cam Tracks



UPPER RAISING CAM - STEEL- IPT 19  
F-218 | OEM: 3116218

Upper Cam Tracks



PRESSURE LEDGE PRE & MAIN PRESSURE  
F-391 | OEM: 3108391

Upper Cam Tracks

PHOTO NOT  
AVAILABLE

LUBE CAM COVER IPT 1"  
F-025 | OEM: 3133025

Upper Cam Tracks



LUBE CAM FOR HEAD & OUTER SHANK  
EU1-441  
F-3023 | OEM: 3133023

Upper Cam Tracks



LUBE CAM TOP-FOR HEAD & SHAFT LUBE-  
INSIDE-EU1-441  
F-17 | OEM: 3133017

Upper Cam Tracks



UPPER RAISING CAM - STEEL - EU1/441-  
ETS  
F-446 | OEM: N/A

\*Turret Assemblies come with Die Locks, Seals, Retainers with hardware, Die Driving Rod, Die Seat Cleaner, Die Insertion Ring, and Cleaning Brush.



Lower Cam Tracks



8 MM FILL CAM - IPT 19  
F-113 | OEM: 3137113

Lower Cam Tracks



STARTER PIECE FOR EJECTOR  
F-199 | OEM: 3126199

Lower Cam Tracks



GRIP LEDGE FOR DOSING-IPT 19  
F-3 | OEM: 3137163

Lower Cam Tracks



PULL DOWN LEDGE FOR DOSING-IPT 19  
F-4 | OEM: 3137164

Lower Cam Tracks



PULL DOWN CAM FOR EJECTOR-IPT 19  
F-8 | OEM: 3136028

Lower Cam Tracks



WEAR PLATE FOR EJECTOR  
F-164 | OEM: 3133164

Lower Cam Tracks



8MM FILL CAM - EU 19  
F-806 | OEM: 3778806

Product Control



OVAL PANE FOR FEEDING HOPPER 92MM  
F-292 | OEM: 3116292

Product Control



16MM BRONZE INSERT  
F-39 | OEM: 3128639

Product Control



SLIDE IN BRONZE SEAL (OPEN) 11MM  
F-636 | OEM: 3128636

Product Control



SLIDING SLEEVE FOR F-O-M  
F-308 | OEM: 3109308

Product Control



DRIVE SHAFT FOR F-O-M  
F-307 | OEM: 3109307

Turret Hardware



O-RING D=600X8 NBR 70 SHORE A -  
PUNCH RETAINER  
F-505 | OEM: 3752505

Turret Hardware



PUNCH SEALS LOWER "B"  
F-546 | OEM: 3115546

Turret Hardware



PUNCH RESTRAINER 19  
F-605 | OEM: 3752605

Upper Cam Tracks



LOWERING CAM - IPT 19 - DELRIN  
F-27 | OEM: 3136027

Upper Cam Tracks



LUBE FELT FOR FLAT CAMS IPT 19, EU 19  
F-463 | OEM: 3119463

Upper Cam Tracks



PLASTIC HOLDING LEDGE - PUNCH  
REMOVAL - DELRIN  
F-714 | OEM: 3117714

Upper Cam Tracks



HOLDING BAR FLAT PUNCH - IPT 19  
F-724 | OEM: 3117724

Upper Cam Tracks



LUBE CAM COVER IPT 19 - DELRIN  
F-024 | OEM: 3133024

Upper Cam Tracks



LUBE CAM FOR HEAD AND OUTER SHANK  
IPT 19 - DELRIN  
F-020 | OEM: 3133020

Upper Cam Tracks



OUTER SHANK FELT 66.3X26X5  
F-6487 | OEM: 3126487

Upper Cam Tracks



PRESSURE LEDGE PRE & MAIN PRESSURE  
F-391 | OEM: 3108391

Product Control



FEEDER PAN  
F-930 | OEM: 3500930

Product Control



FEED FRAME BRACKET  
F-930-1 | OEM: N/A

Product Control



LARGE FEEDER INSERT  
F-930-2 | OEM: N/A

Product Control



SMALL FEEDER INSERT  
F-930-3 | OEM: N/A

Product Control



FEEDER PAN ASSEMBLY  
F-930/A | OEM: N/A

Lower Cam Tracks



14MM FILL CAM - EU 19  
F-566 | OEM: N/A

Lower Cam Tracks

PHOTO NOT AVAILABLE

18MM FILL CAM - EU 1"  
F-069 | OEM: N/A

Lower Cam Tracks



10MM FILL CAM - EU 1"  
F-065 | OEM: N/A

Product Control



SCRAPER A 6X12X6/4  
F-907 | OEM: N/A

Upper Cam Tracks



HOLDING LEDGE - PUNCH REMOVAL  
F-714 | OEM: 3117714

Upper Cam Tracks



UPPER LOWERING CAM IPT 19  
F-692 | OEM: N/A

Upper Cam Tracks



LUBE FELT FOR PUNCH SHANK  
(WIPING FELT)  
F-612 | OEM: 3101612

Upper Cam Tracks



LUBE CAM FOR HEAD & OUTER SHANK -  
EU1/441  
F-3023 | OEM: 3133023

Upper Cam Tracks



LUBE CAM TOP - FOR HEAD & SHAFT LUBE  
- INSIDE - EU1/441  
F-17 | OEM: 3133017

Upper Cam Tracks



SCUPPER RAISING CAM - STEEL -  
EU1/441 - ETS  
F-446 | OEM: N/A



### Lower Cam Tracks



14MM FILL CAM - EU 19  
F10-063 | OEM: 3100617

### Lower Cam Tracks



GRIP LEDGE DOSING D1 - EU 19  
F10-080 | OEM: N/A

### Lower Cam Tracks



GUIDE PIECE  
F-103 | OEM: 3133103

### Lower Cam Tracks



12MM FILL CAM - EU 1"  
F10-598 | OEM: 3105598

### Lower Cam Tracks



WEAR PLATE  
F10-915 | OEM: 3113915

### Lower Cam Tracks



12MM FILL CAM - IPT 19  
F-691 | OEM: N/A

### Lower Cam Tracks



10MM FILL CAM - EU19  
F10-061 | OEM: 3100615

### Lower Cam Tracks



12MM FILL CAM - EU19  
F10-062 | OEM: 3100616

### Product Control



TOOTHED BELT FOR F-O-M  
F-305 | OEM: 3795305

### Turret Hardware



PUNCH SEALS LOWER "B"  
F-546 | OEM: 3115546

### Turret Hardware



PUNCH RESTRAINER 19  
F-406 | OEM: 3733406

### Turrets



17 STATION TURRET ASSEMBLY\*  
F10-17T | OEM: N/A

### Upper Cam Tracks



OUTER SHANK FELT 66.3X26X5  
F-6487 | OEM: 3126487

\*Turret Assemblies come with Die Locks, Seals, Retainers with hardware, Die Driving Rod, Die Seat Cleaner, Die Insertion Ring, and Cleaning Brush.

Lower Cam Tracks



**WEAR PLATE**  
F10-915 | OEM: 3113915

Lower Cam Tracks



**TRANSITION CAM PRE-COMPRESSION**  
F12-722 | OEM: 3113722

Lower Cam Tracks



**THRUST PIECE (EJECTION RAMP)**  
F12-765 | OEM: 3113765

Lower Cam Tracks



**TIGHT PUNCH CONTROL DOSING**  
F12-816 | OEM: 3113816

Lower Cam Tracks



**DOSING LEDGE**  
F12-817 | OEM: 3113817

Lower Cam Tracks



**16MM FILL CAM - EU1"/441**  
F-55 | OEM: 3114755

Lower Cam Tracks



**16MM FILL CAM - EU 19**  
F-748 | OEM: 3114748

Lower Cam Tracks



**18MM FILL CAM - EU 19**  
F-749 | OEM: 3114749

Lower Cam Tracks



**14MM FILL CAM - EU1"/441**  
F-754 | OEM: 3114754

Lower Cam Tracks



**18MM FILL CAM - EU 1"**  
F-829 | OEM: N/A

Lower Cam Tracks



**PRESSURE LEDGE**  
F-888 | OEM: 3113888

Lower Cam Tracks



**12MM FILL CAM EU B**  
F-748/12MM | OEM: N/A

Lower Cam Tracks



**16MM FILL CAM - EU 1"**  
F-828 | OEM: 3114828

Lower Cam Tracks



**12MM FILL CAM EU-1"**  
F-26 | OEM: 3114826

Lower Cam Tracks



**20MM FILL CAM EU 1"**  
F-197 | OEM: N/A

Lower Cam Tracks



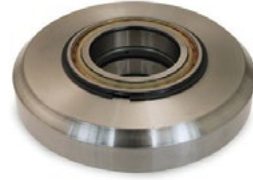
8MM FILL CAM EU 1-441  
F-751 | OEM: 3114751

Pressure Components



PRESSURE ROLL W/O BEARING  
F-89 | OEM: 3114089

Pressure Components



PRESSURE ROLL W/BEARING  
F-89/WB | OEM: 3114089

Product Control



SCRAPER BLADE  
F12-397 | OEM: N/A

Product Control



11MM SLIDE IN BRONZE SEAL  
F-191 | OEM: 3136191

Product Control



16MM SLIDE IN BRONZE SEAL  
F-192 | OEM: 3136192

Product Control



FEEDER PAN  
F-711 | OEM: 3113711

Product Control



F-O-M BASE PLATE FOR BRONZE SEAL  
F-90 | OEM: 3136190

Product Control



25MM SLIDE IN BRONZE SEAL  
F-93 | OEM: 3136193

Product Control



SLIDING SLEEVE FOR F-O-M  
F-308 | OEM: 3109308

Product Control



SCRAPER BAR - DELRIN  
F12-397/D | OEM: N/A

Product Control



16MM SLIDE IN PEEK SEAL  
F-765 | OEM: 9178765

Turret



20 STATION TURRET ASSEMBLY\*  
F12-20T/A | OEM: N/A  
\*See page 36

Turret Hardware



DIE LOCK SCREW  
DL-12 | OEM: 1106012

Turret Hardware



DIE LOCK SCREW - EXTENDED TIP  
DL-8 | OEM: 52411232002

Turret Hardware



PUNCH GUIDE SEAL - 1" - UNKEYED  
F-624 | OEM: 2214624

Turret Hardware



PUNCH GUIDE SEAL - 3/4"/19 MM  
F-667 | OEM: 2147667

Turret Hardware



WAVE SPRING  
F-947 | OEM: 3101947

Turret Hardware



PUNCH RESTRAINER 1"  
F-406/1 | OEM: 3733406

Turret Hardware



PUNCH RESTRAINER 19  
F-406 | OEM: 3733406

Upper Cam Tracks



PUNCH HEAD FELT HOLDER  
F-763 | OEM: N/A

Upper Cam Tracks



UPPER LOWERING CAM - EU 19  
F-812 | OEM: 3118812

Upper Cam Tracks



LUBE FELT FOR PUNCH SHANK (WIPING  
FELT)  
F-612 | OEM: 3101612

Upper Cam Tracks

PHOTO NOT  
AVAILABLE

PRESSURE LEDGE- DELRIN  
F-888-P | OEM: 3113888P

Upper Cam Tracks

PHOTO NOT  
AVAILABLE

LOWER PRESSURE RAIL EU1-441  
F-21 | OEM: 3114521

Upper Cam Tracks

PHOTO NOT  
AVAILABLE

DWELL CAM FOR PUNCH REMOVAL - EU1-  
441 - PLASTIC  
F-827 | OEM: 3118827

Upper Cam Tracks



PRE-MAIN DWELL CAM - EU1-441 -  
PLASTIC  
F-826 | OEM: 3118826

\*Turret Assemblies come with Die Locks, Seals, Retainers with hardware, Die Driving Rod, Die Seat Cleaner, Die Insertion Ring, and Cleaning Brush.



Lower Cam Tracks



DOSING WEAR PLATE  
F-155 | OEM: 3100155

Lower Cam Tracks



WEAR PLATE FOR EJECTOR  
F2-2 | OEM: 1706017

Lower Cam Tracks



TRANSITION CAM BETWEEN PRECOMP & MAIN ROLLER  
F-321 | OEM: XX4321

Lower Cam Tracks



LEDGE CAM - IPT 19  
F-687 | OEM: 3101687C

Lower Cam Tracks



HOLDING LEDGE CAM - IPT 19  
F-689 | OEM: 3101689C

Lower Cam Tracks



EJECTION PLATE  
F-81 | OEM: 3100181

Pressure Components



BEARING RETAINER PLATE-TAMPING ROLLER ASSEMBLY  
F-299 | OEM: 3100299

Pressure Components



WASHER - TAMPING ROLLER ASSEMBLY  
F-304 | OEM: 3100304

Pressure Components



PRESSURE ROLL WITH BEARING  
F-6 | OEM: 3023006

Pressure Components|Parts



BEARING FOR ROLL  
F-77 | OEM: 3023077

Product Control



F-0-M BOTTOM PLATE  
F2-24 | OEM: 44-06-020

Product Control



F-0-M BOTTOM PLATE - EARLY MODEL  
F2-24E | OEM: N/A

Product Control

PHOTO NOT AVAILABLE

F-0-M BOTTOM PLATE-EARLY MODEL (DELFIN)  
F2-24EP | OEM: N/A

Turret



43 STATION TURRET  
F2-43T | OEM: N/A

Turret



36 STATION TURRET ASSEMBLY\*  
F2-36T | OEM: N/A

\*See page 38

Turret Hardware



DIE LOCK SCREW  
DL-12 | OEM: 1106012

Turret Hardware



DIE LOCK SCREW - EXTENDED TIP  
DL-8 | OEM: 52411232002

Turret Hardware



LOWER PUNCH RETAINER (BALL PLUNGER)  
F-02 | OEM: N/A

Turret Hardware



NYLOC LOWER PUNCH SPRING SCREW  
F3-1N | OEM: N/A

Turret Hardware



PUNCH GUIDE SEAL - 1" - UNKEYED  
F-624 | OEM: 2214624

Turret Hardware



PUNCH GUIDE SEAL - 3/4" / 19 MM  
F-667 | OEM: 2147667

Turret Hardware



LOWER PUNCH RETAINER  
F-9 | OEM: N/A

Turret Hardware



WAVE SPRING  
F-947 | OEM: 3101947

\*Turret Assemblies come with Die Locks, Seals, Retainers with hardware, Die Driving Rod, Die Seat Cleaner, Die Insertion Ring, and Cleaning Brush.

Lower Cam Tracks



DOSING WEAR PLATE  
F-155 | OEM: 3100155

Lower Cam Tracks



RAMP  
F21-429 | OEM: 3101429

Lower Cam Tracks



12MM FILL CAM - IPT 19  
F21-816 | OEM: 3101816

Lower Cam Tracks



14MM FILL CAM - IPT 19  
F21-817 | OEM: 3102817

Lower Cam Tracks



8MM FILL CAM - IPT 19  
F21-814 | OEM: 3101814

Lower Cam Tracks



16MM FILL CAM - IPT 19  
F21-818 | OEM: 3101818

Lower Cam Tracks



TRANSITION CAM BETWEEN PRECOMP & MAIN ROLLER  
F-321 | OEM: XX4321

Lower Cam Tracks



LEDGE CAM - IPT 19  
F-687 | OEM: 3101687C

Lower Cam Tracks



HOLDING LEDGE CAM - IPT 19  
F-689 | OEM: 3101689C

Lower Cam Tracks



WEAR PLATE FOR EJECTOR  
F-80 | OEM: 3100180

Lower Cam Tracks



EJECTION PLATE  
F-81 | OEM: 3100181

Lower Cam Tracks



10MM FILL CAM - EU 1"  
F-821 | OEM: 3101821

Lower Cam Tracks



14MM FILL CAM - EU 1"  
F-823 | OEM: 3101823

Lower Cam Tracks



12MM FILL CAM - EU 19  
F-808 | OEM: N/A

Lower Cam Tracks



12MM FILL CAM - EU 1"  
F-822 | OEM: 3101822

Lower Cam Tracks



8MM FILL CAM - EU 1"  
F-820 | OEM: 3101820

Product Control



SCRAPER BLADE  
F21-11 | OEM: 3110411

Turret



43 STATION TURRET ASSEMBLY\*  
F2-43T | OEM: N/A

Turret Hardware



PUNCH GUIDE SEAL - 1" - UNKEYED  
F-624 | OEM: 2214624

Turret Hardware



PUNCH GUIDE SEAL - 3/4"/19 MM  
F-667 | OEM: 2147667

Turret Hardware



WAVE SPRING  
F-947 | OEM: 3101947

Upper Cam Tracks



UPPER LIFTING CAM - EU19  
F21-431 | OEM: 3101431

Upper Cam Tracks

PHOTO NOT AVAILABLE

FLIGHT CONTROL CAM "B"  
F21-689 | OEM: 3101689C

\*Turret Assemblies come with Die Locks, Seals, Retainers with hardware, Die Driving Rod, Die Seat Cleaner, Die Insertion Ring, and Cleaning Brush.

Drive Components



TOOTHED BELT FOR F-O-M DRIVE  
F-1605 | OEM: 3751605

Lower Cam Tracks



EJECTION / DOSING RAMP  
F-387 | OEM: 3108387

Lower Cam Tracks



12MM FILL CAM IPT 1"  
F-4433 | OEM: 3114433

Lower Cam Tracks



TRANSITION CAM-LOWER PRECOMP. ROLL  
F-557 | OEM: 3110557

Lower Cam Tracks



TRAP LEDGE FOR DOSING - IPT19  
F-927 | OEM: 3110927

Lower Cam Tracks



LOWER DOSING CAM - IPT 19  
F-928 | OEM: 3110928

Lower Cam Tracks



FILLING CAM 14MM IPT 1"  
F-4434 | OEM: 3114434

Lower Cam Tracks



FILLING CAM 16MM IPT 1"  
F-4435 | OEM: 3114435

Lower Cam Tracks



HOLD DOWN LEDGE - IPT 19  
F-929 | OEM: 3110929

Pressure Components



PRESSURE ROLL W/O BEARING  
F-89 | OEM: 3114089

Pressure Components



PRESSURE ROLL W/BEARING  
F-89/WB | OEM: 3114089

Product Control



FEEDER BASE PAN  
F-126 | OEM: 3112126C

Product Control



SCRAPER BAR - BRONZE  
F-361 | OEM: 3106361C

Product Control



F-O-M BASE PLATE  
F-283 | OEM: 3504283

Product Control

PHOTO NOT AVAILABLE

F-O-M ASSEMBLY  
F-674/A | OEM: N/A



Product Control

PHOTO NOT AVAILABLE

GEAR F-O-M  
F-674 | OEM: 3504674

Product Control



SLIDING SLEEVE FOR F-O-M  
F-308 | OEM: 3109308

Product Control



DRIVE SHAFT FOR F-O-M  
F-307 | OEM: 3109307

Product Control

PHOTO NOT AVAILABLE

BAFFLE - DELRIN  
F-575-2-P | OEM: N/A

Product Control

PHOTO NOT AVAILABLE

INTERMEDIATE PLATE - DELRIN  
F-575-P | OEM: N/A

Product Control

PHOTO NOT AVAILABLE

INTERMEDIATE PLATE, F-O-M W/BENT  
F-575 | OEM: N/A

Product Control

PHOTO NOT AVAILABLE

SCRAPER - DELRIN  
F-575-1-P | OEM: N/A

Product Control



FILLING WHEEL - BRONZE  
F-464 | OEM: 3501464, 3501464C

Product Control



METERING WHEEL W/FLAT RODS  
F-465 | OEM: 3501465, 3501465C

Product Control



REVERSE DOSING WHEEL W/FLAT RODS  
F-66 | OEM: 3501466C

Product Control

PHOTO NOT AVAILABLE

SCRAPER ASSEMBLY  
F-3906 | OEM: N/A

Product Control

PHOTO NOT AVAILABLE

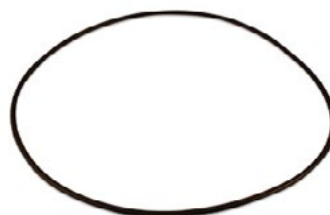
TAIL OVER DIE  
F-6362 | OEM: N/A

Product Control



COVER FOR SCRAPER  
F-363 | OEM: N/A

Turret Hardware



PUNCH RESTRAINER O-RING 400 X 8  
F-1205 | OEM: 3761205

Turret Hardware



PUNCH SEALS LOWER "B"  
F-546 | OEM: 3115546

Turret Hardware



PUNCH GUIDE SEAL - 1" - UNKEYED  
F-624 | OEM: 2214624

Turret Hardware



WAVE SPRING  
F-947 | OEM: 3101947

Turret Hardware



PUNCH RESTRAINER 19  
F-705 | OEM: 3772705

Upper Cam Tracks



LUBE FELT FOR FLAT CAMS IPT19, EU19  
F-365 | OEM: 3115365

Upper Cam Tracks



LUBE FELT / HEAD IPT 1" EU1 FLAT  
F-426 | OEM: 3115426

Upper Cam Tracks



ROTARY SHAFT SEAL  
F-996 | OEM: 2147996

Upper Cam Tracks



LUBE FELT FOR PUNCH SHANK  
F-612 | OEM: 3101612

Upper Cam Tracks



HEAD LUBE CAM - EU 19  
F-390 | OEM: 3118390

Natoli offers two lower cam track options: one piece or our innovative two-piece design. Often times the two-piece design can be dramatically less expensive than purchasing a full bronze part. Contact us for more information +1 636.926.8900.

Lower Cam Tracks



6MM BASE SECTION ONLY  
F3-6B | OEM: N/A

Lower Cam Tracks



8MM BASE SECTION ONLY  
F3-8B | OEM: N/A

Lower Cam Tracks



10MM BASE SECTION ONLY - ALL SERIES  
F3-10B | OEM: N/A

Lower Cam Tracks



11MM BASE SECTION ONLY  
F3-11B | OEM: N/A

Lower Cam Tracks



12MM BASE SECTION ONLY  
F3-12B | OEM: N/A

Lower Cam Tracks



14MM BASE SECTION ONLY  
F3-14B | OEM: N/A

Lower Cam Tracks



16MM BASE SECTION ONLY  
F3-16B | OEM: N/A

Lower Cam Tracks



18MM BASE SECTION ONLY  
F3-18B | OEM: N/A

Lower Cam Tracks



20MM BASE SECTION ONLY  
F3-20B | OEM: N/A

Lower Cam Tracks



6MM - TRACK SECTION ONLY - IPT 19  
FB3-6T | OEM: N/A

Lower Cam Tracks



6MM - TRACK SECTION ONLY - IPT 1"  
FD3-6T | OEM: N/A

Lower Cam Tracks



8MM - TRACK SECTION ONLY - IPT 1"  
FD3-8T | OEM: N/A

Lower Cam Tracks



8MM - TRACK SECTION ONLY - IPT 19  
FB3-8T | OEM: N/A

Lower Cam Tracks



10MM - TRACK SECTION ONLY - IPT 1"  
FD3-10T | OEM: N/A

Lower Cam Tracks



10MM - TRACK SECTION ONLY - IPT 19  
FB3-10T | OEM: N/A

Lower Cam Tracks



11MM - TRACK SECTION ONLY - EU1"  
FD3-11TE4 | OEM: N/A

Lower Cam Tracks



11MM - FILL CAM - COMPLETE - EU1"/441  
FD3-11CE4 | OEM: N/A

Lower Cam Tracks



12MM - TRACK SECTION ONLY - IPT 19  
FB3-12T | OEM: N/A

Lower Cam Tracks



12MM - TRACK SECTION ONLY - IPT 1"  
FD3-12T | OEM: N/A

Lower Cam Tracks



14MM - TRACK SECTION ONLY - IPT 19  
FB3-14T | OEM: N/A

Lower Cam Tracks



14MM - TRACK SECTION - IPT 1"  
FD3-14T | OEM: N/A

Lower Cam Tracks



16MM - TRACK SECTION ONLY - IPT 1"  
FD3-16T | OEM: N/A

Lower Cam Tracks



16MM - TRACK SECTION ONLY - IPT 19  
FB3-16T | OEM: N/A

Lower Cam Tracks



16MM - TRACK SECTION ONLY - EU1"  
FD3-16TE4 | OEM: N/A

Lower Cam Tracks



18MM - TRACK SECTION ONLY - IPT 19  
FB3-18T | OEM: N/A

Lower Cam Tracks



20MM - TRACK SECTION ONLY - IPT 19  
FB3-20T | OEM: N/A

Lower Cam Tracks



20MM - TRACK SECTION ONLY - IPT 1"  
FD3-20T | OEM: N/A

Lower Cam Tracks



6MM FILL CAM - COMPLETE - IPT 19  
FB3-6C | OEM: N/A

Lower Cam Tracks



8MM FILL CAM - COMPLETE - IPT 1"  
FD3-8C | OEM: N/A

Lower Cam Tracks



8MM FILL CAM - COMPLETE - IPT 19  
FB3-8C | OEM: N/A

Lower Cam Tracks



10MM FILL CAM - COMPLETE - IPT 1"  
FD3-10C | OEM: N/A

Lower Cam Tracks



10MM FILL CAM - COMPLETE - IPT 19  
FB3-10C | OEM: N/A

Lower Cam Tracks



12MM FILL CAM - COMPLETE - IPT 1"  
FD3-12C | OEM: N/A

Lower Cam Tracks



12MM FILL CAM - COMPLETE - IPT 19  
FB3-12C | OEM: N/A

Lower Cam Tracks



6MM FILL CAM - COMPLETE - IPT 1"  
FD3-6C | OEM: N/A

Lower Cam Tracks



14MM FILL CAM - COMPLETE - IPT 1"  
FD3-14C | OEM: N/A

Lower Cam Tracks



14MM FILL CAM - COMPLETE - IPT 19  
FB3-14C | OEM: N/A

Lower Cam Tracks



16MM FILL CAM - COMPLETE - IPT 1"  
FD3-16C | OEM: N/A

Lower Cam Tracks



16MM FILL CAM - COMPLETE - EU1"  
FD3-16CE4 | OEM: N/A

Lower Cam Tracks



16MM FILL CAM - COMPLETE - IPT 19  
FB3-16C | OEM: N/A

Lower Cam Tracks



18MM FILL CAM - COMPLETE - IPT 1"  
FD3-18C | OEM: N/A

Lower Cam Tracks



18MM FILL CAM - COMPLETE - IPT 19  
FB3-18C | OEM: N/A

Lower Cam Tracks



20MM FILL CAM - COMPLETE - IPT 19  
FB3-20C | OEM: N/A



Lower Cam Tracks



20MM FILL CAM - COMPLETE - IPT 1"  
FD3-20C | OEM: N/A

Lower Cam Tracks



WEAR PLATE  
F3-04 | OEM: 1723004

Lower Cam Tracks



LOWER PRESSURE CAM - IPT 1"  
FD3-10 | OEM: 1423016

Lower Cam Tracks



LOWER PRESSURE CAM - IPT 19  
FB3-52 | OEM: 1423017

Lower Cam Tracks



LOWER PRESSURE CAM - IPT 19  
FB3-60 | OEM: 1423016

Lower Cam Tracks



LOWER PRESSURE CAM - IPT 1"  
FD3-54 | OEM: 1423017

Lower Cam Tracks



LOWER GRIP LEDGE - IPT 19  
FB3-100 | OEM: 1423015

Lower Cam Tracks



LOWER GRIP LEDGE - IPT 1"  
FD3-180 | OEM: 1423015

Lower Cam Tracks



EJECTION PLATE  
F3-2 | OEM: 1723014

Lower Cam Tracks



LOWER PRESSURE CAM - IPT 19  
FB3-110 | OEM: 1723003

Lower Cam Tracks



LOWER PRESSURE CAM - IPT 1"  
FD3-20 | OEM: 1723003

Pressure Components



PRE-COMPRESSION ROLL  
F3-004 | OEM: 31-23-004

Pressure Components



BEARING FOR PRE-COMPRESSION ROLL  
F3-46 | OEM: 31-23-046

Pressure Components



SNAP RING FOR ROLL PIN  
F3-9A | OEM: N/A

Pressure Components



ROLL PIN  
F3-87 | OEM: 3023010

Pressure Components



ROLL PIN LOCKNUT  
F3-87-1 | OEM: N/A

Pressure Components



SHAFT FOR PRE-COMPRESSION ROLL  
F3-9 | OEM: 31-23-009

Pressure Components



PRESSURE ROLL WITH BEARING  
F-6 | OEM: 3023006

Pressure Components



BEARING FOR ROLL  
F-77 | OEM: 3023077

Product Control



THRUST COLLAR PLASTIC  
F3-038 | OEM: 3100038

Product Control



TAKE-OFF BAR  
F3-01 | OEM: 44-23-001

Product Control



TAKE-OFF BAR FOR FAST GATE  
F3-01/F | OEM: 44-23-001

Product Control



TAIL OVER DIE  
F3-11 | OEM: 45-23-011

Product Control



F-O-M BOTTOM PLATE  
F3-14 | OEM: 44-23-014

Product Control



F-O-M BOTTOM PLATE W/ GASKET  
F3-14/1 | OEM: N/A

Product Control



FEEDER BASE PAN  
F-534 | OEM: 3101534

Product Control



SEALING GASKET - BRONZE (2 HOLE)  
F3-14/1-1 | OEM: N/A

Product Control



SEALING GASKET - DELRIN (2 HOLE)  
F3-14/1-1P | OEM: N/A

Product Control



SEALING GASKET - BRONZE (3 HOLE)  
F3-14/1-2 | OEM: N/A

Product Control



SEALING GASKET - DELRIN (3 HOLE)  
F3-14/1-2P | OEM: N/A

Product Control



SCRAPER BLADE (DELRIN)  
F3-4/1 | OEM: N/A

Product Control



SCRAPER BLADE  
F3-4 | OEM: 45-23-004

Product Control



SCRAPER BLADE COVER  
F3-5 | OEM: N/A

Turret



37 STATION TURRET ASSEMBLY\*  
F3-37T | OEM: N/A  
*\*See page 55*

Turret



37 STATION TURRET ASSEMBLY\* -  
STAINLESS STEEL  
F3-37T/SS | OEM: N/A  
*\*See page 55*

Turret



45 STATION TURRET ASSEMBLY\*  
F3-45T | OEM: N/A  
*\*See page 55*

Turret



55 STATION TURRET ASSEMBLY\*  
F3-55T | OEM: N/A  
*\*See page 55*

Turret Hardware



DIE LOCK SCREW  
DL-12 | OEM: 1106012

Turret Hardware



DIE LOCK SCREW - EXTENDED TIP  
DL-8 | OEM: 52411232002

Turret Hardware



LOWER PUNCH RETAINER (BALL PLUNGER)  
F-02 | OEM: N/A

Turret Hardware



LOWER PUNCH RETAINER  
F-114 | OEM: N/A

Turret Hardware



NYLOC LOWER PUNCH SPRING SCREW  
F3-1N | OEM: N/A

Turret Hardware



PUNCH GUIDE SEAL - 3/4"/19 MM  
F-667 | OEM: 2147667

Turret Hardware



LOWER PUNCH RETAINER  
F-9 | OEM: N/A

Turret Hardware



WAVE SPRING  
F-947 | OEM: 3101947

Natoli offers two lower cam track options: one piece or our innovative two-piece design. Often times the two-piece design can be dramatically less expensive than purchasing a full bronze part. Contact us for more information +1 636.926.8900.

Lower Cam Tracks



11MM BASE SECTION ONLY  
F3-11B | OEM: N/A

Lower Cam Tracks

Lower Cam Tracks

Lower Cam Tracks



11MM - TRACK SECTION ONLY - EU1"  
FD3-11TE4 | OEM: N/A



16MM - TRACK SECTION ONLY - EU1"  
FD3-16TE4 | OEM: N/A



11MM - FILL CAM - COMPLETE - EU1"/441  
FD3-11CE4 | OEM: N/A

Lower Cam Tracks

Pressure Components

Turret Hardware



16MM - FILL CAM - COMPLETE - EU1"  
FD3-16CE4 | OEM: N/A



THRUST COLLAR PLASTIC  
F3-038 | OEM: 3100038



DIE LOCK SCREW  
DL-12 | OEM: 1106012

Turret Hardware



DIE LOCK SCREW - EXTENDED TIP  
DL-8 | OEM: 52411232002

Lower Cam Tracks



11MM BASE SECTION ONLY  
F3-11B | OEM: N/A

Lower Cam Tracks



11MM - TRACK SECTION ONLY - EU1"  
FD3-11TE4 | OEM: N/A

Lower Cam Tracks



16MM - TRACK SECTION ONLY - EU1"  
FD3-16TE4 | OEM: N/A

Lower Cam Tracks



11MM FILL CAM - EU 1"/441  
F-56212 | OEM: 531-67-22-18-253

Lower Cam Tracks



11MM - FILL CAM - COMPLETE - EU1"/441  
FD3-11CE4 | OEM: N/A

Lower Cam Tracks



16MM - FILL CAM - COMPLETE - EU1"  
FD3-16CE4 | OEM: N/A



Drive Components



TOOTHED BELT FOR F-O-M DRIVE  
F-1605 | OEM: 3751605

Lower Cam Tracks



WEIGHT ADJUSTER  
F-086 | OEM: 3134086

Lower Cam Tracks



EJECTION / DOSING RAMP  
F-387 | OEM: 3108387

Lower Cam Tracks



8MM FILL CAM IPT 19  
F-411 | OEM: 3114411

Lower Cam Tracks



12MM FILL CAM IPT 19  
F-413 | OEM: 3114413

Lower Cam Tracks



12MM FILL CAM IPT 1"  
F-4433 | OEM: 3114433

Lower Cam Tracks



10MM FILL CAM EU 1"  
F-422 | OEM: 3114422

Lower Cam Tracks



14MM FILL CAM IPT 1"  
F-4434 | OEM: 3114434

Lower Cam Tracks



18MM FILL CAM IPT 1"  
F-4436 | OEM: 3114436

Lower Cam Tracks



HOLDING LEDGE LOWER CAMS IPT 19  
F-918 | OEM: 3110918

Lower Cam Tracks



TRAP LEDGE FOR DOSING - IPT19  
F-927 | OEM: 3110927

Lower Cam Tracks



LOWER DOSING CAM - IPT 19  
F-928 | OEM: 3110928

Lower Cam Tracks



HOLD DOWN LEDGE - IPT 19  
F-929 | OEM: 3110929

Lower Cam Tracks



GRIP LEDGE  
F-95 | OEM: N/A

Lower Cam Tracks



TRANSITION CAM-LOWER  
PRECOMPRESSION ROLL  
F-557 | OEM: 3110557

Lower Cam Tracks

PHOTO NOT AVAILABLE

FILLING CAM - 6MM - EU1-441  
F-440 | OEM: 3114440

Pressure Components



PRESSURE ROLL W/O BEARING  
F-89 | OEM: 3114089

Pressure Components



PRESSURE ROLL W/BEARING  
F-89/WB | OEM: 3114089

Pressure Components



BEARING FOR PRESSURE ROLL  
SG-513-BRG | OEM: N/A

Pressure Components



SNAP RING FOR PRESSURE ROLL BEARING  
SG-513-SR | OEM: N/A

Product Control



FEEDER BASE PAN  
F-126 | OEM: 3112126C

Product Control



SLIDE-IN BRONZE SEAL - 16MM  
F-32 | OEM: 3128632

Product Control



SEGMENT LEFT STOPPER  
F-33 | OEM: 3111033

Product Control



SCRAPER BAR - BRONZE  
F-361 | OEM: 3106361C

Product Control



SEGMENT CENTRAL STOPPER  
F-370 | OEM: 3110370

Product Control



SEGMENT RIGHT STOPPER  
F-541 | OEM: 3114541

Product Control



SLIDE- IN BRONZE SEAL 25MM  
F-633 | OEM: 3128633

Product Control



SCRAPER  
F-640 | OEM: 3114640

Product Control



SLIDING SLEEVE FOR F-O-M  
F-308 | OEM: 3109308

Product Control



DRIVE SHAFT FOR F-O-M  
F-307 | OEM: 3109307

Product Control

PHOTO NOT AVAILABLE

BAFFLE - DELRIN  
F-575-2-P | OEM: N/A

Turret



43 STATION TURRET ASSEMBLY\*  
F29-43T | OEM: N/A \*See page 55

Turret



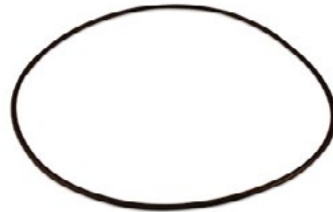
29 STATION TURRET ASSEMBLY\*  
F29-29T | OEM: N/A \*See page 55

Turret



36 STATION TURRET ASSEMBLY\*  
F29-36T | OEM: N/A \*See page 55

Turret Hardware



PUNCH RESTRAINER O-RING 400 X 8  
F-1205 | OEM: 3761205

Turret Hardware



SPRING COVER  
F-187 | OEM: 3108187

Turret Hardware



SPRING BOLT  
F-188 | OEM: 3108188

Turret Hardware



PUNCH SEALS LOWER "B"  
F-546 | OEM: 3115546

Turret Hardware



GUIDE KEY  
F-588 | OEM: 3109588, 3115597

Turret Hardware



GUIDE BLOCK FOR LARGE PRESSURE  
SCREW ON THE DIE TABLE  
F-597 | OEM: 3115597

Turret Hardware



PUNCH GUIDE SEAL - 1"  
F-624 | OEM: 2214624

Turret Hardware



PUNCH GUIDE SEAL - 3/4"/19 MM  
F-667 | OEM: 2147667

Turret Hardware



FINDER THREADED PIN FOR ROTOR SHAFT  
F-936 | OEM: 3119936

Turret Hardware



PUNCH RESTRAINER 19  
F-705 | OEM: 3772705

Turret Hardware|Parts



SCREW COMPRESSION SPRING  
(LENGTH=125 MM)  
F-905 | OEM: 3751905

Upper Cam Tracks



LUBE FELT FOR FLAT CAMS IPT19, EU19  
F-365 | OEM: 3115365

Upper Cam Tracks



LUBE FELT / HEAD IPT 1" EU1 FLAT  
F-426 | OEM: 3115426

Upper Cam Tracks



ROTARY SHAFT SEAL  
F-996 | OEM: 2147996

Upper Cam Tracks



LUBE FELT FOR PUNCH SHANK  
(WIPING FELT)  
F-612 | OEM: 3101612

\*Turret Assemblies come with Die Locks, Seals, Retainers with hardware, Die Driving Rod, Die Seat Cleaner, Die Insertion Ring, and Cleaning Brush.

Drive Components



TOOTHED BELT FOR F-O-M DRIVE  
F-1605 | OEM: 3751605

Lower Cam Tracks



BASE PLATE FOR EJECTOR  
F-002 | OEM: 3109002

Lower Cam Tracks



WEAR PLATE - EJECTOR  
F-003 | OEM: 3109003

Lower Cam Tracks



LEDGE CAM FOR EJECTION - IPT 1"  
F-036 | OEM: 407036

Lower Cam Tracks



FEATHER KEY DIN6885  
F-05 | OEM: 3781905

Lower Cam Tracks



FASTENING FOR GUIDE COLUMNS  
F-061 | OEM: 3114061

Lower Cam Tracks



8MM FILL CAM IPT 19  
F-482 | OEM: 3113482

Lower Cam Tracks



10MM FILL CAM - IPT 19  
F-483 | OEM: 3113483

Lower Cam Tracks



10MM FILL CAM - IPT 1"  
F-110 | OEM: 3211040110

Lower Cam Tracks



12MM FILL CAM - IPT 19  
F-484 | OEM: 3113484

Lower Cam Tracks



14MM FILL CAM EU 1"  
F-067 | OEM: 3132067

Lower Cam Tracks



16MM FILL CAM - IPT 19  
F-485 | OEM: 3111040116, 3113485

Lower Cam Tracks



25MM FILL CAM - IPT 1"  
F39-25 | OEM: N/A

Lower Cam Tracks



GRIP LEDGE - IPT 1"  
F-303 | OEM: 3133033

Lower Cam Tracks



GRUB SCREW FOR MOMENT SUPPORT  
F-323 | OEM: 3112323



Lower Cam Tracks



LOCK TENSION JACK COUNTER BEARING  
F-205 | OEM: N/A

Lower Cam Tracks



GUIDE COLUMN  
F-375 | OEM: 3108375

Lower Cam Tracks



EJECTION / DOSING RAMP  
F-387 | OEM: 3108387

Lower Cam Tracks



SHIM FOR INJECTOR IPT  
F-367 | OEM: 3106367

Lower Cam Tracks



SQUARE STEEL  
F-537 | OEM: 3110537

Lower Cam Tracks



WEAR PLATE- EJECTOR  
F-567 | OEM: 3111567

Lower Cam Tracks



DOSING LEDGE METERING INSERT  
F-580 | OEM: 3110580

Lower Cam Tracks



LOWERING CAM - OUTSIDE - IPT 19  
F-586 | OEM: 3110586

Lower Cam Tracks



DOSING LEDGE METERING INSERT  
F-594 | OEM: 3105940

Lower Cam Tracks



GUIDE - METERING HEAD  
F-730 | OEM: 3109730

Lower Cam Tracks



INSIDE GRIP LEDGE - IPT 19  
F-733 | OEM: 3109733

Lower Cam Tracks



INSIDE GRIP LEDGE - IPT 1"  
F-755 | OEM: 3109755

Lower Cam Tracks



SCRAPER A 10 X 18 X 8/5  
F-759 | OEM: 2148759

Lower Cam Tracks



UPPER LOWERING CAM - IPT 19  
F-762 | OEM: 3109762

Lower Cam Tracks



GRIP LEDGE - EJECTOR - IPT19  
F-799 | OEM: 3109799

Lower Cam Tracks



HUB FLANGE  
F-873 | OEM: 3109873

Lower Cam Tracks



GRIP LEDGE - EU 19  
F-904 | OEM: 3100904

Lower Cam Tracks



SPRING WASHER DIN2090-B16  
F-950 | OEM: 2142950

Lower Cam Tracks



RETAINING PIECE - HOLDING LEDGE - SHORT  
F-956 | OEM: 3108956

Lower Cam Tracks



RETAINING PIECE - HOLDING LEDGE - LONG  
F-957 | OEM: 3108957

Lower Cam Tracks



TRANSITION CAM - MAIN COMPRESSION  
F-967 | OEM: 3108967

Lower Cam Tracks



TRANSITION CAM - PRECOMPRESSION  
F-968 | OEM: 3108968

Lower Cam Tracks



6MM FILL CAM - IPT 1"  
F-3541 | OEM: 3123541

Lower Cam Tracks



12MM FILL CAM - IPT 1"  
FD39-554 | OEM: N/A

Lower Cam Tracks



12MM FILL CAM - EU 1  
F-066 | OEM: N/A

Lower Cam Tracks



14MM FILL CAM - IPT 19  
F-457 | OEM: 3113457

Lower Cam Tracks



LUBE TUBE FOR CAM BRACKET BOTTOM  
F-805 | OEM: 3108805

Lower Cam Tracks



16MM FILL CAM EU 1"  
F-068 | OEM: N/A

Lower Cam Tracks



18MM FILL CAM - IPT 19  
F-486 | OEM: 3113486

Lower Cam Tracks



20MM FILL CAM - IPT 1"  
F-556 | OEM: 3113556

Lower Cam Tracks

PHOTO NOT AVAILABLE

LOWER CAM BODY  
F-979 | OEM: 3107979

Lower Cam Tracks



PRESSING RAIL - METERING HEAD- IPT 1"  
F-951 | OEM: 32110401951

Lower Cam Tracks

PHOTO NOT AVAILABLE

LOWER CAMS - IPT 19  
F-419 | OEM: 3502419

Lower Cam Tracks

PHOTO NOT AVAILABLE

DOSING HEAD - IPT 19  
F-378 | OEM: 3502378

Lower Cam Tracks

PHOTO NOT AVAILABLE

EJECTION CAM - IPT 19  
F-385 | OEM: 3502385

Lower Cam Tracks

PHOTO NOT AVAILABLE

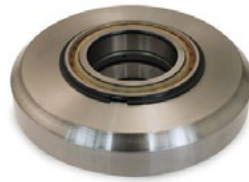
BOTTOM CAM CARRIER  
F-238 | OEM: 3503238

Pressure Components



PRESSURE ROLL W/O BEARING  
F-89 | OEM: 3114089

Pressure Components



PRESSURE ROLL W/BEARING  
F-89/WB | OEM: 3114089

Pressure Components



BEARING FOR PRESSURE ROLL  
SG-513-BRG | OEM: N/A

Pressure Components



SNAP RING FOR PRESSURE ROLL BEARING  
SG-513-SR | OEM: N/A

Product Control



SLIDE IN BRONZE SEGMENT, 16MM  
F-1464 | OEM: N/A

Product Control



SLIDE IN BRASS SEGMENTS - 25MM  
F-1465 | OEM: N/A

Product Control



SEGMENT STOPPER  
F-466 | OEM: 3131466

Product Control



TABLET SCRAPER AIR REJECT  
F-479 | OEM: 3123479

Product Control



FEEDER BASE PAN - SPRING LOADED  
INSERT DESIGN  
F-735-1 | OEM: N/A

Product Control



FEEDER PAN ASSEMBLY - SPRING LOADED  
F-735/1 | OEM: N/A

Product Control



FEEDER PAN INSERT  
F-735-2 | OEM: N/A

Product Control



F-O-M SCRAPER  
F-889 | OEM: 3112889

Product Control



TAIL OVER DIE  
F-940 | OEM: 3109940

Product Control

PHOTO NOT AVAILABLE

BASE PLATE FOR BRONZE SEGMENT  
F-747 | OEM: 313747

Product Control



FILLING WHEEL W/FLAT RODS - BRONZE  
F-464 | OEM: 3501464, 3501464C

Product Control



METERING WHEEL W/FLAT RODS  
F-465 | OEM: 3501465, 3501465C

Product Control



REVERSE DOSING WHEEL W/FLAT RODS  
F-66 | OEM: 3501466C

Product Control

PHOTO NOT AVAILABLE

1/4 TURN PIN FOR FEEDER PAN  
F-735-3 | OEM: N/A

Product Control



FEEDER BASE PAN  
F-735 | OEM: 3109735

Product Control

PHOTO NOT AVAILABLE

SPRING FOR FEEDER PAN  
F-735-4 | OEM: N/A

Product Control



SCRAPER BAR - BRONZE  
F-416 | OEM: 3110416

Turret



49 STATION TURRET ASSEMBLY\*  
F39-49T/A | OEM: N/A

Turret



61 STATION TURRET ASSEMBLY\*  
F39-61T/A | OEM: 3505719

Turret



61 STATION TURRET ASSEMBLY\* &  
ALL CAMS - IPT 19  
F39-61T-CA | OEM: N/A

\*See page 65

\*See page 65

\*See page 65

Turret



73 STATION TURRET ASSEMBLY\*  
F39-73T/A | OEM: N/A  
*\*See page 65*

Turret



73 STATION TURRET ASSEMBLY\* & ALL  
CAMS - IPT 19  
F39-73T-CA | OEM: N/A *\*See page 65*

Turret Hardware



DIE LOCK SCREW  
DL-12 | OEM: 1106012

Turret Hardware



DIE LOCK SCREW - EXTENDED TIP  
DL-8 | OEM: 52411232002

Turret Hardware



ROTOR SHAFT  
F-027 | OEM: 4070247

Turret Hardware



COMPRESSION SPRING - TURRET BOLT  
F-028 | OEM: F407028

Turret Hardware



ROTOR SHAFT MUSHROOM HEAD  
F-029 | OEM: 407029

Turret Hardware



SPRING COVER  
F-187 | OEM: 3108187

Turret Hardware



SPRING BOLT  
F-188 | OEM: 3108188

Turret Hardware



O-RING - PUNCH RETAINER  
F-505 | OEM: 3752505

Turret Hardware



PUNCH GUIDE SEAL 1" ALUMINUM  
CASING  
F-549 | OEM: 3115549

Turret Hardware



GUIDE KEY  
F-588 | OEM: 3109588, 3115597

Turret Hardware



GUIDE BLOCK FOR LARGE PRESSURE  
SCREW ON THE DIE TABLE  
F-597 | OEM: 3115597

Turret Hardware



PUNCH RESTRAINER 19  
F-605 | OEM: 3752605

Turret Hardware



PUNCH GUIDE SEAL - 1"  
F-624 | OEM: 2214624



Turret Hardware



SCREW COMPRESSION SPRING  
(LENGTH=125MM)  
F-905 | OEM: 3751905

Turret Hardware



FINDER THREADED PIN FOR ROTOR SHAFT  
F-936 | OEM: 3119936

Turret Hardware



CLAMP FOR PUNCH RESTRAINER 19 MM  
F-86 | OEM: 3115486

Turret Hardware

PHOTO NOT AVAILABLE

STRAIGHT PIN-M6x20-A26  
F-294 | OEM: 2143294

Upper Cam Tracks



DOSING ELEMENT ASSEMBLY 10 CMM  
F-030 | OEM: 3700332

Upper Cam Tracks



DOSING ELEMENT - ASSEMBLY 20 CMM  
F-031 | OEM: 3700334

Upper Cam Tracks



DOSING ELEMENT - ASSEMBLY 50 CMM  
F-032 | OEM: 3700335

Upper Cam Tracks



HINGE PIN 4MMx50MM  
F-421 | OEM: 3104421

Upper Cam Tracks



HOLDING RAIL FOR LUBRICATION AREA  
IPT 19  
F-044-P | OEM: 3111044-P

Upper Cam Tracks



COVER PLATE  
F-099 | OEM: N/A

Upper Cam Tracks



HOLDING BAR W/O SHAFT LUBE - DELRIN  
- IPT 1"  
F-162-P | OEM: 32310401621

Upper Cam Tracks



HOLDING BAR FOR PUNCH REMOVAL -  
DELRIN - IPT 1"  
F-163-P | OEM: 32310401631

Upper Cam Tracks



HOLDING BAR FLAT PUNCH -  
DELRIN - IPT 1"  
F-165-P | OEM: 32310401651

Upper Cam Tracks



HOLDING BAR FOR SHAFT LUBE -  
DELRIN - IPT 1"  
F-168-P | OEM: 32310401681

Upper Cam Tracks



HOLDING BAR FOR PUNCH HEAD -  
DELRIN - IPT 1"  
F-169-P | OEM: 32310401691

Upper Cam Tracks



COVER FOR HOLDING LEDGE - DELRIN - IPT 19 OR IPT 1"  
F-171-P | OEM: 33330401713

Upper Cam Tracks



COVER PLATE - PUNCH REMOVAL - DELRIN  
F-172-P | OEM: 33330401723

Upper Cam Tracks



UPPER LIFTING CAM IPT 1"  
F-180 | OEM: 32110401801

Upper Cam Tracks



UPPER LOWERING CAM - DELRIN - IPT 1"  
F-190-P | OEM: 32310401901

Upper Cam Tracks



UPPER PUNCH LIFTING CAM IPT 19  
F-193 | OEM: 3116193

Upper Cam Tracks



LUBE FELT FOR FLAT CAMS IPT19, EU19  
F-365 | OEM: 3115365

Upper Cam Tracks



LUBE FELT / HEAD IPT1 EU1  
F-426 | OEM: 3115426

Upper Cam Tracks



UPPER PUNCH LIFTING CAM IPT 19  
F-520 | OEM: 3109520

Upper Cam Tracks



PUNCH SHAFT FELT HOLDER  
F-753 | OEM: N/A

Upper Cam Tracks



SILICON PLUG FOR TOP CAM  
F-533 | OEM: 3109533

Upper Cam Tracks



ROTOR BEARING  
F-589 | OEM: 3100589

Upper Cam Tracks



FELT HOLDER FOR SHAFT LUBRICATION  
F-673 | OEM: 31430401673

Upper Cam Tracks



PLASTIC HOLDING LEDGE - PUNCH REMOVAL  
F-714 | OEM: 3117714

Upper Cam Tracks



HOLDING LEDGE - IPT 19  
F-728 | OEM: 3109728

Upper Cam Tracks



HOLDING LEDGE - IPT 1"  
F-035 | OEM: 407035

Upper Cam Tracks



PUNCH HEAD FELT HOLDER  
F-763 | OEM: N/A

Upper Cam Tracks



HOLDING RAIL - PRE & MAIN PRESSURE  
- IPT 19  
F-763-P | OEM: 3109763-P

Upper Cam Tracks



O-RING  
F-793 | OEM: 2147793

Upper Cam Tracks



SHIM RING FOR CAM CARRIER TOP  
F-819 | OEM: 3108819

Upper Cam Tracks



ADJUSTABLE CLAMPING LEVER  
F-835 | OEM: 2143835

Upper Cam Tracks



ROTARY SHAFT SEAL  
F-996 | OEM: 2147996

Upper Cam Tracks



FELT HOLDER/HEAD LUBE DIA 19 FLAT  
CAMS  
F-364 | OEM: 3115364

Upper Cam Tracks



KNURLED SCREW - M6x10  
F-408 | OEM: 2143408

Upper Cam Tracks



SET SCREW - CAMBODY  
F-570 | OEM: N/A

Upper Cam Tracks

PHOTO NOT AVAILABLE

TOP CAM CARRIER FOR DIE TABLE  
F-319 | OEM: 3503319

Upper Cam Tracks

PHOTO NOT AVAILABLE

UPPER CAMS ASSEMBLY - INNER &  
OUTER SHAFT & HEAD - IPT 19  
F-142 | OEM: N/A

Upper Cam Tracks



LUBE FELT FOR PUNCH SHANK  
(WIPING FELT)  
F-612 | OEM: 3101612

Upper Cam Tracks



UPPER RAISING CAM - STEEL- IPT 19  
F-218 | OEM: 3116218

Upper Cam Tracks

PHOTO NOT AVAILABLE

DOWEL PIN 12 M6x40  
F-739 | OEM: 2142739

Upper Cam Tracks

PHOTO NOT AVAILABLE

SCREW M10x40  
F-579 | OEM: 2143579

Upper Cam Tracks



HOLDING BAR FOR PUNCH REMOVAL IPT 19  
F-530-P | OEM: 3109530-P

Upper Cam Tracks



HOLDING RAIL FOR PUNCH HEAD  
LUBRICATION - IPT 19  
F-768-P | OEM: 3109768-P

Upper Cam Tracks

PHOTO NOT  
AVAILABLE

PUNCH HEAD LUBE FELT - IPT 1"  
F-761 | OEM: 32710401761

Upper Cam Tracks

PHOTO NOT  
AVAILABLE

UPPER CAM BODY  
F-217 | OEM: 3110217

Upper Cam Tracks



PRESSURE LEDGE PRE & MAIN PRESSURE  
F-391 | OEM: 3108391

\*Turret Assemblies come with Die Locks, Seals, Retainers with hardware, Die Driving Rod, Die Seat Cleaner, Die Insertion Ring, and Cleaning Brush.

Drive Components



TOOTHED BELT FOR F-O-M DRIVE  
F-1605 | OEM: 3751605

Lower Cam Tracks



BASE PLATE FOR EJECTOR  
F-002 | OEM: 3109002

Lower Cam Tracks



WEAR PLATE - EJECTOR  
F-003 | OEM: 3109003

Lower Cam Tracks



LEDGE CAM FOR EJECTION - IPT 1"  
F-036 | OEM: 407036

Lower Cam Tracks



FASTENING FOR GUIDE COLUMNS  
F-061 | OEM: 3114061

Lower Cam Tracks



10MM FILL CAM - IPT 1"  
F-110 | OEM: 3211040110

Lower Cam Tracks



10MM FILL CAM - IPT 19  
F-483 | OEM: 3113483

Lower Cam Tracks



12MM FILL CAM - IPT 19  
F-484 | OEM: 3113484

Lower Cam Tracks



12MM FILL CAM - IPT 1"  
FD39-554 | OEM: N/A

Lower Cam Tracks



14MM FILL CAM - IPT 19  
F-457 | OEM: 3113457

Lower Cam Tracks



16MM FILL CAM - IPT 19  
F-485 | OEM: 3111040116, 3113485

Lower Cam Tracks



GRUB SCREW FOR MOMENT SUPPORT  
F-323 | OEM: 3112323

Lower Cam Tracks



WEAR PLATE- EJECTOR  
F-567 | OEM: 3111567

Lower Cam Tracks



LOWERING CAM - OUTSIDE - IPT 19  
F-586 | OEM: 3110586

Lower Cam Tracks



DOSING LEDGE METERING INSERT  
F-594 | OEM: 3105940



Lower Cam Tracks



SHIM FOR EJECTOR IPT  
F-367 | OEM: 3106367

Lower Cam Tracks



EJECTION / DOSING RAMP  
F-387 | OEM: 3108387

Lower Cam Tracks



GUIDE - METERING HEAD  
F-730 | OEM: 3109730

Lower Cam Tracks



INSIDE GRIP LEDGE - IPT 19  
F-733 | OEM: 3109733

Lower Cam Tracks



INSIDE GRIP LEDGE - IPT 1"  
F-755 | OEM: 3109755

Lower Cam Tracks



GRIP LEDGE - EJECTOR - IPT 19  
F-799 | OEM: 3109799

Lower Cam Tracks



HUB FLANGE  
F-873 | OEM: 3109873

Lower Cam Tracks

PHOTO NOT AVAILABLE

LOWER CAM BODY  
F-979 | OEM: 3107979

Lower Cam Tracks



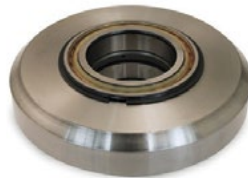
PRESSING RAIL - METERING HEAD- IPT 1"  
F-951 | OEM: 32110401951

Pressure Components



PRESSURE ROLL W/O BEARING  
F-89 | OEM: 3114089

Pressure Components



PRESSURE ROLL W/BEARING  
F-89/WB | OEM: 3114089

Product Control



SCRAPER BAR - BRONZE  
F-416 | OEM: 3110416

Product Control



F-O-M BASE PAN - SPRING LOADED  
INSERT DESIGN  
F-735-1 | OEM: N/A

Product Control



FEEDER PAN INSERT  
F-735-2 | OEM: N/A

Product Control



TAIL OVER DIE  
F-940 | OEM: 3109940

Product Control

PHOTO NOT AVAILABLE

1/4 TURN PIN FOR FEEDER PAN  
F-735-3 | OEM: N/A

Product Control



F-0-M BASE PAN  
F-735 | OEM: 3109735

Product Control

PHOTO NOT AVAILABLE

SPRING FOR FEEDER PAN  
F-735-4 | OEM: N/A

Turret Hardware



O-RING - PUNCH RETAINER  
F-505 | OEM: 3752505

Turret Hardware



PUNCH RESTRAINER 19  
F-605 | OEM: 3752605

Turret Hardware



PUNCH GUIDE SEAL - 1"  
F-624 | OEM: 2214624

Turret Hardware

PHOTO NOT AVAILABLE

DOWEL PIN 12 M6x40  
F-739 | OEM: 2142739

Turret Hardware

PHOTO NOT AVAILABLE

SCREW M10x40  
F-579 | OEM: 2143579

Upper Cam Tracks



HOLDING LEDGE- IPT 1"  
F-035 | OEM: 407035

Upper Cam Tracks



HOLDING RAIL FOR LUBRICATION AREA  
IPT 19  
F-044-P | OEM: 3111044-P

Upper Cam Tracks



UPPER PUNCH LIFTING CAM IPT 19  
F-193 | OEM: 3116193

Upper Cam Tracks



LUBE FELT FOR FLAT CAMS IPT19, EU19  
F-365 | OEM: 3115365

Upper Cam Tracks



PRESSURE LEDGE PRE & MAIN PRESSURE  
F-391 | OEM: 3108391

Upper Cam Tracks



LUBE FELT / HEAD IPT1" EU1  
F-426 | OEM: 3115426

Upper Cam Tracks



UPPER PUNCH LIFTING CAM IPT 19  
F-520 | OEM: 3109520

Upper Cam Tracks



PLASTIC HOLDING LEDGE - PUNCH REMOVAL  
F-714 | OEM: 3117714

Upper Cam Tracks



HOLDING LEDGE - IPT 19  
F-728 | OEM: 3109728

Upper Cam Tracks



UPPER LOWERING CAM - IPT 19  
F-762 | OEM: 3109762

Upper Cam Tracks



HOLDING RAIL - PRE & MAIN PRESSURE - IPT 19  
F-763-P | OEM: 3109763-P

Upper Cam Tracks



TRANSITION CAM - MAIN COMPRESSION  
F-967 | OEM: 3108967

Upper Cam Tracks



TRANSITION CAM - PRECOMPRESSION  
F-968 | OEM: 3108968

Upper Cam Tracks



ROTARY SHAFT SEAL  
F-996 | OEM: 2147996

Upper Cam Tracks



LUBE FELT FOR PUNCH SHANK (WIPING FELT)  
F-612 | OEM: 3101612

Upper Cam Tracks



UPPER RAISING CAM - STEEL- IPT 19  
F-218 | OEM: 3116218

Upper Cam Tracks



HOLDING BAR FOR PUNCH REMOVAL IPT 19  
F-530-P | OEM: 3109530-P

Upper Cam Tracks



HOLDING RAIL FOR PUNCH HEAD LUBRICATION - IPT 19  
F-768-P | OEM: 3109768-P

Upper Cam Tracks

PHOTO NOT AVAILABLE

PUNCH HEAD LUBE FELT - IPT 1"  
F-761 | OEM: 32710401761

Upper Cam Tracks

PHOTO NOT AVAILABLE

UPPER CAM BODY  
F-217 | OEM: 3110217

Lower Cam Tracks



EJECTION / DOSING RAMP  
F-387 | OEM: 3108387

Product Control



SLIDE IN BRONZE SEAL 16MM  
F-39 | OEM: 3128639

Product Control



FEEDER PAN  
F-5 | OEM: 3128805

Product Control



SLIDE IN BRONZE SEAL 11MM  
F-636 | OEM: 3128636

Product Control



SLIDE IN BRONZE SEAL 25MM  
F-40 | OEM: 3128640

# Get Our Latest Accessories Catalog



**The industry's most comprehensive accessories catalog.**

Our 6th edition catalog features everything you need to clean, polish, maintain, store and analyze your equipment to prolong tool life, support your investment and increase productivity.

Printed, digital and interactive online catalogs are available at no charge at [natoli.com](http://natoli.com).







[natoli.com](http://natoli.com)

**Natoli Engineering Company, Inc.**

28 Research Park Circle, St. Charles, MO 63304 • 636.926.8900 • [info@natoli.com](mailto:info@natoli.com)