



KILIAN

REPLACEMENT PARTS



NATOLI ENGINEERING COMPANY, INC.

TABLET PRESS PARTS CATALOG

Can't Find Your Part?

View our Parts and Accessories
catalogs online
www.natoli.com
or call customer service:
636-926-8900

You Get More From a Natoli Part

Natoli Engineering Company, Inc., manufactures tablet press replacement parts from the highest quality materials. Because we precision engineer them in-house, Natoli parts meet and often exceed the functionality and longevity of OEM parts.



Same-Day Shipping

We maintain an on-site inventory of over 250,000 replacement parts, which means the vast majority of our orders ship out the same day. Order today, ship tomorrow.



Parts Sample Program

Need a part not found in our catalog? We can custom make it and you may even receive it for free! Send us a sample part and Natoli will reverse engineer it and send you the first part produced complimentary. Some conditions do apply. Contact your Natoli representative for details.



Custom Parts

Each year we custom make hundreds of parts engineered to our customer's exact specifications. This is a special service we offer to all of our customers because often times they cannot find the part anywhere else. If you're searching for that "hard-to-find" part and do not see it listed in the Custom Parts section of this catalog, call us and most probably we can make it for you.



Accessories Catalog

We publish the most comprehensive accessories catalog in the industry which features everything you need to keep your tablet press running efficiently and trouble-free. View the catalog at: Natoli.com, or call us at +1 636-926-8900 and we'll ship it to you the same day.

Table of Contents

E150	9
KTS 700	11
KTS 1000	12
LX	13
NRD	14
RT	15
RTS	16
RUD	19
RX	20
RX B	23
RX D	24
RXZS	24
S 250	25
SYN 500	26
SYN 700	27
T 100	28
T 300	29
T 400	30
T 400B	31
TX	32



E150

Part	Category	Part #	OEM	Page
FILL CAM-OUTER 20MM FILL - EU D	Lower Cam Tracks	K14-519		9
FILL CAM OUTER 20MM FILL - IPT D	Lower Cam Tracks	K14-519/1		9
FILL CAM OUTER 20MM - IPT B	Lower Cam Tracks	KI-582	10249582	9
FILL CAM INNER 20MM FILL - EU D	Lower Cam Tracks	K14-520		9
FILL CAM INNER 20MM FILL - IPT D	Lower Cam Tracks	K14-520/1		9
FILL CAM INNER 20MM - IPT B	Lower Cam Tracks	KI-583	10249583	9
FILLING CAM - IPT D	Lower Cam Tracks	K14-517/1		9
FILLING CAM - IPT B	Lower Cam Tracks	KI-585	10249585	9
EJECTION PLATE - NOTCHED	Lower Cam Tracks	K14-309/3		9
TRANSITION CAM	Lower Cam Tracks	KI-248		9
CATCH RAIL IPT B - EJECTION	Lower Cam Tracks	KI-831	108831	9
CATCH RAIL EU B - EJECTION	Lower Cam Tracks	KI-831/1		9
CATCH RAIL IPT D - EJECTION	Lower Cam Tracks	KI-847	108847	9
CATCH RAIL EU D - EJECTION	Lower Cam Tracks	KI-847/1		9
MOTOR PULLEY BEARING	Lower Cam Tracks	KI-G203/1		9
FILL CAM - EU D	Lower Cam Tracks	K14-517	130517/EUD	10
PRE COMPRESSION CAM	Lower Cam Tracks	KI-924	10110924	10
BEARING FOR ECCENTRIC ROLL PIN	Pressure Rolls & Components	KI-48	22214E	10
UPPER OR LOWER PRESSURE ROLL	Pressure Rolls & Components	KI-054	109054	10
PRE-COMPRESSION ROLL	Pressure Rolls & Components	KI-233	108233, 10108233	10
21 STATION TURRET ASSEMBLY	Turrets	K14-21T		10
DIE LOCK SCREW	Turret Hardware	DL-15	108164	10
UNKEYED PUNCH GUIDE SEAL "D-TYPE"	Turret Hardware	KI-416	126416	10
KEYED PUNCH GUIDE SEAL "D-TYPE"	Turret Hardware	KI-417		10
UNKEYED PUNCH GUIDE SEAL "B-TYPE"	Turret Hardware	KI-418	126418	10
PUNCH GUIDE SEAL "B" - DOUBLE LIP	Turret Hardware	KI-418/1		10
KEYED PUNCH GUIDE SEAL "B-TYPE"	Turret Hardware	KI-419	126419	10
MAIN UPPER CAMTRACK - EU D	Upper Cam Tracks	KI-406	137406	10
PUSH DOWN RAIL	Upper Cam Tracks	KI-448		10

KTS 700

Part	Category	Part #	OEM	Page
PRESSURE ROLLER	Pressure Rolls & Components	KI-236	10242236	11
FILL SHOE FIII FS ALUMINUM	Product Control	KI-669	239669	11
SEALING SEGMENT	Product Control	KI-804	231804	11
FILL SHOE FII FS 316 SS	Product Control	KI-086	239086	11
FILL SHOE FII FS ALUMINUM	Product Control	KI-69	226369	11
FILL SHOE FIII FS 316 SS	Product Control	KI-322	243322	11
UPPER SECTION CONTROL RAIL - IPT B	Upper Cam Tracks	KI-696	250696	11
UPPER SECTION CONTROL CAM - IPT D	Upper Cam Tracks	KI-697	250697	11

KTS 1000

Part	Category	Part #	OEM	Page
PRESSURE ROLL	Pressure Rolls & Components	KI-611	211611	12
PRECOMPRESSION ROLLER	Pressure Rolls & Components	KI-247	10215247	12
PRESSURE ROLL EU "B"	Pressure Rolls & Components	KI-566	10233566	12
SCRAPER	Product Control	KI-93	213193	12

LX

Part	Category	Part #	OEM	Page
UPPER OR LOWER PRESSURE ROLL	Pressure Rolls & Components	KI-054	109054	13
DIE LOCK SCREW	Turret Hardware	DL-137	136137	13

NRD

Part	Category	Part #	OEM	Page
EJECTION CAM	Lower Cam Tracks	KNR-1		14
WEAR PLATE	Lower Cam Tracks	KNR-2		14
EJECTION RAMP	Lower Cam Tracks	KNR-3		14
PIVOT PLATE	Lower Cam Tracks	KNR-4		14
PULL DOWN CAM	Lower Cam Tracks	KNR-715	7-15/39-14	14

RT

Part	Category	Part #	OEM	Page
FEEDER COVER	Product Control	KI-091	108091/9	15
PUNCH GUIDE SEAL 30MM	Product Control	KI-4M43		15

RTS

Part	Category	Part #	OEM	Page
EJECTION PLATE - NOTCHED	Lower Cam Tracks	K14-309/3		16
EJECTION PLATE	Lower Cam Tracks	KI-308/3	107308/8	16
FILLING CAM - IPT D	Lower Cam Tracks	K14-517/1		16
FILL CAM SET 20MM - IPT B	Lower Cam Tracks	KI-77	10249577	16
FILL CAM - IPT B	Lower Cam Tracks	KI-585	10249585	16
FILLING CAM - EU D	Lower Cam Tracks	K14-517	130517/EUD	16
FILL CAM INNER 20MM FILL - EU D	Lower Cam Tracks	K14-520		16
FILL CAM INNER 20MM FILL - IPT D	Lower Cam Tracks	K14-520/1		16
FILL CAM INNER 20MM - IPT-B	Lower Cam Tracks	KI-583	10249583	16
FILL CAM OUTER 20MM FILL - IPT D	Lower Cam Tracks	K14-519/1		16
FILL CAM-OUTER 20MM FILL - EU D	Lower Cam Tracks	K14-519		16
FILL CAM OUTER 20MM - IPT B	Lower Cam Tracks	KI-582	10249582	16
CATCH RAIL IPT B - EJECTION	Lower Cam Tracks	KI-831	108831	16
CATCH RAIL EU B - EJECTION	Lower Cam Tracks	KI-831/1		16
CATCH RAIL IPT D - EJECTION	Lower Cam Tracks	KI-847	108847	16
CATCH RAIL EU D - EJECTION	Lower Cam Tracks	KI-847/1		17
MOTOR PULLEY BEARING	Lower Cam Tracks	KI-G203/1		17
EJECTION CAM GUIDE - EU-D	Lower Cam Tracks	K14-847	108847	17
PRE COMPRESSION CAM	Lower Cam Tracks	KI-924	10110924	17
UPPER OR LOWER PRESSURE ROLL	Pressure Rolls & Components	KI-054	109054	17
PRE-COMPRESSION ROLL	Pressure Rolls & Components	KI-233	108233, 10108233	17
BEARING FOR ECCENTRIC ROLL PIN	Pressure Rolls & Components	KI-48	22214E	17
LOWER ECCENTRIC ROLL PIN	Pressure Rolls & Components	KI-883	107883	17
SCRAPER BLADE	Product Control	KI-094	108094	17
TAIL OVER DIE	Product Control	KI-353	116353	17
SCRAPER	Product Control	KI-717	136717	17
DIE LOCK SCREW	Turret Hardware	DL-137	136137	17
DIE LOCK SCREW	Turret Hardware	DL-15	108164	17
BRAKE PIN	Turret Hardware	KI-048	108048	17
TILT LEVER	Turret Hardware	KI-301	108301	17
PUNCH GUIDE SEAL "D-TYPE"	Turret Hardware	KI-416	126416	18
PUNCH GUIDE SEAL - "D-TYPE"	Turret Hardware	KI-417		18
PUNCH GUIDE SEAL "B-TYPE"	Turret Hardware	KI-418	126418	18
PUNCH GUIDE SEAL "B" - DOUBLE LIP	Turret Hardware	KI-418/1		18
PUNCH GUIDE SEAL "B-TYPE"	Turret Hardware	KI-419	126419	18
TILT LEVER - BRAKE PIN	Turret Hardware	KI-940	107940	18
16 Station Turret	Turrets	K14-16T		18
26 STATION TURRET ASSEMBLY	Turrets	K14-26T		18
21 STATION TURRET ASSEMBLY	Turrets	K14-21T		18
PUSH DOWN RAIL	Upper Cam Tracks	KI-448		18
LOW PRESSURE RAIL	Upper Cam Tracks	KI-446	137446	18
MAIN UPPER CAMTRACK - EU D	Upper Cam Tracks	KI-406	137406	18
MAIN UPPER PUNCH OVERLOAD FLIGHT CAM - EU-D	Upper Cam Tracks	K14-448	137448	18

RUD

Part	Category	Part #	OEM	Page
INNER FILL CAM	Lower Cam Tracks	KI-512	148261	19
OUTER FILL CAM	Lower Cam Tracks	KI-612	148263	19
DIE LOCK SCREW	Turret Hardware	DL-592	10111592	19
BRAKE PIN	Turret Hardware	KI-28		19

RUD (cont.)

Part	Category	Part #	OEM	Page
UPPER LOWERING ROOF CAM COMPLETE	Upper Cam Tracks	KI-600		19
PULL DOWN CAM- INSERT	Upper Cam Tracks	KI-600-1		19

RX

Part	Category	Part #	OEM	Page
LOWERING CAM	Upper Cam Tracks	KI-188	171188	20
LOWERING CAM SEGMENT	Lower Cam Tracks	KI-164/2	171164	20
FILL CAM 12.5MM-20MM - IPT D	Lower Cam Tracks	KI-226	151226	20
DOSING CAM	Lower Cam Tracks	KI-229	108229	20
FILL CAM 12MM - BRONZE - IPT B	Lower Cam Tracks	KI-323	108323	20
FILL CAM 16 MM-BRONZE	Lower Cam Tracks	KI-324	108324	20
FILL CAM 16 MM - A2	Lower Cam Tracks	KI-324/1	108324	20
CATCH RAIL	Lower Cam Tracks	KI-343	108343	20
CONTROL CAM	Lower Cam Tracks	KI-348	108348	20
EJECTION CAM	Lower Cam Tracks	KI-459/6	108459/6	20
TRANSITION PIECE	Lower Cam Tracks	KI-572	108572	20
FILL CAM 20MM-BRONZE	Lower Cam Tracks	KI-797	130797	20
TRANSITION CAM	Lower Cam Tracks	KI-11/KI-248	C1-11	20
THRUST WASHER	Pressure Rolls & Components	KI-003	RXC2-031	20
PRESSURE ROLL	Pressure Rolls & Components	KI-225	108225	20
PRE-COMPRESSION ROLL	Pressure Rolls & Components	KI-233	108233, 10108233	21
LOWER ECCENTRIC BOLT	Pressure Rolls & Components	KI-24	108224	21
MAIN PRESSURE ROLL	Pressure Rolls & Components	KI-705/1	125705	21
LOWER ROLL PIN BUSH	Pressure Rolls & Components	KI-588	144558	21
BRONZE SEALING SEGMENT	Product Control	KI-75	167775	21
FILLSHOE	Product Control	KI-774	167774	21
SCRAPER RAIL	Product Control	KI-503	108503	21
SEAL SEGMENT FOR FILLING SHOE - PEEK	Product Control	KI-75/P		21
INNER WEARING WASHER	Turret Hardware	KI-252	108252	21
TILT LEVER	Turret Hardware	KI-301	108301	21
BELLOWS RETAINER	Turret Hardware	KI-3510		21
INNER BEARING BUSHING	Turret Hardware	KI-26	108226	21
OUTER BEARING BUSHING	Turret Hardware	KI-035	111035	21
LOWERING CAM SEGMENT	Upper Cam Tracks	KI-164/2	171164	21
LOWERING CAM	Upper Cam Tracks	KI-188	171188	21
RAISING CAM	Upper Cam Tracks	KI-875	169875/1	22

RX B

Part	Category	Part #	OEM	Page
STOP RAIL IPT-B	Lower Cam Tracks	KI-009	119009	23
FILL CAM 0.5-8MM - IPT-B	Lower Cam Tracks	KI-784	130784	23
FILL CAM 4.5-12MM - IPT-B	Lower Cam Tracks	KI-785	130785	23
FILL CAM 8.5-16MM - IPT-B	Lower Cam Tracks	KI-786	130786	23
PUNCH ASCENDING SEGMENT - IPT-B	Upper Cam Tracks	K11-861	169861	23
CAMTRACK SEGMENT - IPT-B	Upper Cam Tracks	K11-862	169862	23
PUNCH DESCENDING SEGMENT - IPT-B	Upper Cam Tracks	K11-863	169863	23
LOWERING CAM IPT	Upper Cam Tracks	KI-174	167174	23

RX D

Part	Category	Part #	OEM	Page
CONTROL CAM - IPT D	Lower Cam Tracks	KI-577	157577	24
CATCH RAIL - IPT D	Lower Cam Tracks	KI-576	157576	24
SAFETY CAM - IPT D	Lower Cam Tracks	KI-579	157579	24
FILL CAM .5-8MM - IPT D	Lower Cam Tracks	KI-682	157682	24
FILL CAM 4.5-12MM - IPT D	Lower Cam Tracks	KI-590	157590	24
FILL CAM 8.5-16MM - IPT D	Lower Cam Tracks	KI-685	157685	24

RXZS

Part	Category	Part #	OEM	Page
PUNCH DESCENDING SEGMENT - IPT-B	Upper Cam Tracks	K11-863	169863	24

S-250

Part	Category	Part #	OEM	Page
DOSING CAM	Lower Cam Tracks	KI-747	127747	25
FILL CAM 20MM - IPT B	Lower Cam Tracks	KI-962	10219962	25
WEAR CAM	Lower Cam Tracks	KI-975	10195975	25
MAIN PRESSURE ROLL	Pressure Rolls & Components	KI-705/1	125705	25
PRE-COMPRESSION ROLLER	Product Control	KI-120	195120	25
GRAVITY FILL SHOE INSERT - WHITE NYLATRON	Product Control	KI-183	206183	25
SIGHT GLASS	Product Control	KI-536	107536	25
PUSH DOWN SEGMENT - IPT B	Upper Cam Tracks	KI-331	221331/1	25
UPPER RAISING CAM - IPT B	Upper Cam Tracks	KI-567	219567-1	25

SYN-500

Part	Category	Part #	OEM	Page
FILL CAM SET 20MM - IPT D	Lower Cam Tracks	KI-238	225238	26
CATCH CAM - IPT B	Lower Cam Tracks	KI-928/2		26
CATCH CAM-IPT D	Lower Cam Tracks	KI-929/2	224929	26
CAM INNER HALF 20MM - IPT D	Lower Cam Tracks	KI-171	10221171	26
CAM OUTER HALF 20MM - IPT D	Lower Cam Tracks	KI-170	10221170	26
EJECTION CAM	Lower Cam Tracks	KI-919		26
PRESSURE ROLLER	Pressure Rolls & Components	KI-611	211611	26
SCRAPER	Product Control	KI-894	226894	26
PUNCH SCRAPER SEAL "B"	Turret Hardware	KI-193		26
CONTROL CAM IPT - B	Upper Cam Tracks	KI-751	250751	26
CONTROL CAM IPT - D	Upper Cam Tracks	KI-752	250752	26

SYN-700

Part	Category	Part #	OEM	Page
PRESSURE ROLL - NEW STYLE	Pressure Rolls & Components	KI-067	257067	27
PRESSURE ROLLER	Pressure Rolls & Components	KI-611	211611	27
SEALING SEGMENT	Product Control	KI-804	231804	27

T100

Part	Category	Part #	OEM	Page
EJECTION CAM	Lower Cams	KI-388	180388	28
PRESSURE ROLLER	Pressure Roll	KI-956	10190956	28
FEEDER ASSEMBLY	Product Control	KI-100/A		28

T300

Part	Category	Part #	OEM	Page
MAIN PRESSURE ROLL	Pressure Rolls & Components	KI-705/1	125705	29
ADJUSTING SCREW	Product Control	KI-529-2		29
FILL CAM 20MM TSMB	Lower Cam Tracks	KI-962	10219962	29
FILL CAM 0.5-8MM - IPT B LUBRICATED	Lower Cam Tracks	KI-660	153660	29
FILL CAM 4.5 - 12MM - IPT-B LUBRICATED	Lower Cam Tracks	KI-661	153661	29
FILL CAM 8.5 16MM - IPT B LUBRICATED	Lower Cam Tracks	KI-662	153662	29
CATCH RAIL - IPT D	Lower Cam Tracks	KI-6		29
CATCH RAIL - EU D	Lower Cams	KI-210	157210	29
CONTROL RAIL - EU D	Lower Cams	KI-212	157212	29
DRIVE RAIL	Lower Cams	KI-726	127726	29
HOPPER WINDOW	Product Control	KI-01	189001	29
PRE-COMPRESSION ROLLER	Product Control	KI-120	195120	29
BRONZE SEAL	Product Control	KI-249	168249	29

T400

Part	Category	Part #	OEM	Page
DOSING CAM	Lower Cams	K4-214	140214	30
CATCH CAM - IPT-B	Lower Cams	KI-083	163083	30
PRESSURE ROLL BEARING	Pressure Rolls & Components	K15-C2200	C2200, TXC2-200	30
PRESSURE ROLL	Pressure Rolls & Components	KI-286	183286	30

T400 (cont.)

Part	Category	Part #	OEM	Page
MAIN PRESSURE ROLLER	Pressure Rolls & Components	KI-705	125705	30
MAIN PRESSURE ROLL	Pressure Rolls & Components	KI-705/1	125705	30
COMPRESSION ROLLER (MINUS HARDWARE)	Pressure Rolls & Components	K4-543		30
FEED FRAME INSERT	Product Control	K4-167		30
DIE LOCK SCREW	Turret Hardware	DL-15	108164	30
PUNCH GUIDE SEAL "D-TYPE"	Turret Hardware	KI-416	126416	30
PUNCH GUIDE SEAL "B-TYPE"	Turret Hardware	KI-418	126418	30
PUNCH GUIDE SEAL "B" - DOUBLE LIP	Turret Hardware	KI-418/1		30
PUNCH GUIDE SEAL "B-TYPE"	Turret Hardware	KI-419	126419	30
67 STATION TURRET ASSEMBLY	Turrets	K4-67T		30
CONTROL CAM IPT-B	Upper Cams	KI-613	164613	30

T400 B

Part	Category	Part #	OEM	Page
FILL CAM 8MM - IPT-B	Lower Cams	KI-426	162426	31
FILL CAM 12MM - IPT-B	Lower Cams	KI-427	162427	31
FILL CAM 16MM - IPT B	Lower Cams	KI-428	162428	31

TX

Part	Category	Part #	OEM	Page
DRIVE PULLEY BEARING	Drive Components	K15-G2200	TXG2-200	32
OUTER STOP RING	Hydraulic & Components	K15-C2009	TXC2-009	32
UPPER CAM CARRIER SEAL	Hydraulic & Components	K15-F001/1	TXF-001/1	32
PRESSURE CYLINDER BUSHING	Hydraulic & Components	K15-H1001/2	TXH1-001/2	32
EXTENSION PIECE	Lower Cam Tracks	K15-B1011	TXB1-001	32
LINKTRACK	Lower Cam Tracks	K15-B1014	TXB1-014	32
INTERMEDIATE CAM	Lower Cam Tracks	K15-B1016	TXB1-016	32
TRANSFER CAM	Lower Cam Tracks	K15-B1017	TXB1-017	32
DOSING CAM CARRIER	Lower Cam Tracks	K15-B6001	TXB6-001	32
DOSING CAM	Lower Cam Tracks	K15-B6010	TXB6-010	32
DOSING CONTROL TRACK - IPT B	Lower Cam Tracks	K15-F003	TXF-003	32
0.5 - 8MM FILL LOWER PULLDOWN CAM EU B	Lower Cam Tracks	K15-S21001/EU	TX-S21-001	32
FILL CAM 12.5-20MM FILL - LUBRICATED IPT B	Lower Cam Tracks	KI-007	158007	32
FILL CAM 12.5MM - 20MM - EU B	Lower Cam Tracks	KI-099	145099	32
FILL CAM 12.5MM - 20MM - IPT B	Lower Cam Tracks	KI-099-1		32
FILL CAM 8.5-16MM - EU D	Lower Cam Tracks	KI-209/3	157209/3	33
FILL CAM 4.5-12MM - LUBRICATED - IPT D	Lower Cam Tracks	KI-223	157223	33
FILL CAM 8.5-16MM - LUBRICATED IPT D	Lower Cam Tracks	KI-224	157224	33
FILL CAM 0.5-8MM - LUBRICATED - IPT B	Lower Cam Tracks	KI-660	153660	33
FILL CAM 4.5 - 12MM LUBRICATED - IPT B	Lower Cam Tracks	KI-661	153661	33
FILL CAM 8.5 16MM LUBRICATED - IPT B	Lower Cam Tracks	KI-662	153662	33
FILL CAM 4.5-12MM - IPT B	Lower Cam Tracks	KI-712	130712	33
FILL CAM 8.5MM - 16MM - IPT B	Lower Cam Tracks	KI-713	130713	33
FILL CAM 4.5MM - 12MM - EU D	Lower Cam Tracks	KI-716	130716	33
DOSING CAM SAFETY RAIL IPT "B"	Lower Cam Tracks	KI-830	108830	33
CATCH RAIL IPT B - EJECTION	Lower Cam Tracks	KI-831	108831	33
CATCH RAIL EU B - EJECTION	Lower Cam Tracks	KI-831/1		33
CATCH RAIL IPT D - EJECTION	Lower Cam Tracks	KI-847	108847	33
CATCH RAIL EU D - EJECTION	Lower Cam Tracks	KI-847/1		33
EJECTION CAM "B"	Lower Cam Tracks	KI-931	108931	33
FILL CAM .5-8MM FILL - LUBRICATED IPT D	Lower Cam Tracks	KI-221	157221	34
EJECTION CAM - B TOOLING - STEEL	Lower Cam Tracks	KI-931/S	108931	34
LOWER PRECOMPRESSION PIN	Pressure Rolls & Components	K15-B5002	TXB5-002	34
LOWER PRECOMP CYLINDER SEAL	Pressure Rolls & Components	K15-B5202	TXB5-202	34
PRECOMPRESSION ROLL BEARING	Pressure Rolls & Components	K15-B5203	TXB5-203	34
UPPER YOKE SPINDLE BEARING	Pressure Rolls & Components	K15-C1200	TXC1-200	34
NEEDLE BEARING FOR UPPER ROLL PIN	Pressure Rolls & Components	K15-C1202	TXC1-202	34
NEEDLE BEARING	Pressure Rolls & Components	K15-C1203	TXC1-203	34
THRUST BEARING WASHER	Pressure Rolls & Components	K15-C2007	TXC2-007	34
PRESSURE ROLL BEARING	Pressure Rolls & Components	K15-C2200	C2200, TXC2-200	34
THRUST BEARING	Pressure Rolls & Components	K15-C2208	TXC2-208	34
UPPER PRE-COMP ROLL PIN BEARING	Pressure Rolls & Components	K15-C5212	TXC5-212	34
UPPER PRE COMP ROLL PIN NEEDLE BEARING	Pressure Rolls & Components	K15-C5213	TXC5-213	34
UPPER PRE COMP ROLL PIN SEAL	Pressure Rolls & Components	K15-C5215	TXC5-215	34
UPPER PRECOMPRESSION ROLL SEAL	Pressure Rolls & Components	K15-C5216	TXC5-216	34

TX (cont.)

Part	Category	Part #	OEM	Page
THRUST WASHER	Pressure Rolls & Components	KI-003	RXC2-031	35
PRESSURE ROLL	Pressure Rolls & Components	KI-225	108225	35
PRE-COMPRESSION ROLL	Pressure Rolls & Components	KI-233	108233, 10108233	35
ECCENTRIC BOLT - UPPER PRECOMP - EARLY MODEL	Pressure Rolls & Components	KI-369		35
ECCENTRIC BOLT - UPPER PRECOMP - LATE MOD. (HEX)	Pressure Rolls & Components	KI-369/1	144369	35
UPPER ECCENTRIC ROLL PIN	Pressure Rolls & Components	K15-B2002	TXB2-002	35
MAIN PRESSURE ROLL	Pressure Rolls & Components	KI-705/1	125705	35
UPPER ECCENTRIC ROLL PIN	Pressure Rolls & Components	K15-C2002	TXC2-002	35
LOWER ROLL PIN BUSH	Pressure Rolls & Components	KI-588	144558	35
TABLET STRIPPER	Product Control	K15-B1001	148169/1	35
COVERINA SEGMENT (TAIL OVER DIE) SERIES 32014	Product Control	K15-C440	TXFIIC-440	35
SCRAPER	Product Control	K15-C442	TXFIIC-442	35
TABLET CHUTE	Product Control	KI-184	158184	35
PUNCH GUIDE SEAL "B" - DOUBLE LIP	Product Control	KI-418/1		35
FILL SHOE HOUSING	Product Control	KI-C001	TX FIIC-001	35
FEEDER PAN COVER	Product Control	KI-C002	TX FIIC-002	36
LOWER GEAR HOUSING	Product Control	KI-C003	TX FIIC-003	36
UPPER GEAR HOUSING	Product Control	KI-C004	TX FIIC-004	36
SCRAPER RAIL - SERIES32010	Product Control	KI-C009	TXFIIC-009	36
DRIVE SHAFT - LONG	Product Control	KI-C020	TXFIIC-020	36
DRIVE SHAFT - SHORT	Product Control	KI-C021	TXFIIC-021	36
FEEDER GEAR	Product Control	KI-C023	TX-FIIC-023	36
VERTICAL SHAFT	Product Control	KI-C024	TXFIIC-024	36
FEEDER GEAR	Product Control	KI-C025	TX-FIIC-025	36
COUPLING BOX	Product Control	KI-C027	TXFIIC-027	36
LOWER ADJUSTER	Product Control	KI-C028	TXFIIC-028	36
LEVEL ADJUSTER	Product Control	KI-C029	TXFIIC-029	36
BEARING HOUSING	Product Control	KI-C030	TXFIIC-030	36
LARGE AGITATOR	Product Control	KI-C051	154232	36
SMALL AGITATOR	Product Control	KI-C052	154234	36
SEALING RING FOR FEEDER DRIVE SHAFT	Product Control	KI-C070		37
FILL SHOE BEARING	Product Control	KI-C071	TX-FIIC-071	37
BUSHING	Product Control	KI-C076	TXFIIC-076	37
MOTOR PULLEY BEARING	Product Control	KI-G203/1		37
TILT LEVER AT LOWER PUNCH BODY	Product Control	KI-NRDD81	NRD-D81	37
SEAL FOR BEARING HOUSING	Product Control	KI-C030/1	TXFIIC-030	37
DIE LOCK SCREW	Turret Hardware	DL-109	102109	37
DIE LOCK SCREW	Turret Hardware	DL-115	102115	37
DIE LOCK SCREW	Turret Hardware	DL-137	136137	37
DIE LOCK SCREW	Turret Hardware	DL-15	108164	37
SPRING FOR BRAKE LEVER PIN	Turret Hardware	KI-051	15030051	37
PUNCH BUSHING	Turret Hardware	KI-129		37
BRAKE PIN AT LOWER PUNCH BODY	Turret Hardware	KI-293	108293	37
BRAKE PIN - VIVIDUR PVC - U- GREY	Turret Hardware	KI-293-P	108293	37
TILT LEVER	Turret Hardware	KI-301	108301	37
PUNCH GUIDE SEAL "D-TYPE"	Turret Hardware	KI-416	126416	38
PUNCH GUIDE SEAL "B-TYPE"	Turret Hardware	KI-418	126418	38
PUNCH GUIDE SEAL "B-TYPE"	Turret Hardware	KI-419	126419	38
TILT LEVER AT LOWER PUNCH BODY	Turret Hardware	KI-623	110623	38
MAIN SPINDLE	Turret Hardware	KI-888	108888	38
21 STATION TURRET ASSEMBLY	Turrets	K15-21T		38
26 STATION TURRET ASSEMBLY	Turrets	K15-26T		38
32 STATION TURRET ASSEMBLY	Turrets	K15-32T		38
40 STATION TURRET ASSEMBLY	Turrets	K15-40T		38
UPPER CAM TRACK - BRONZE - IPT B	Upper Cam Tracks	K15-F17002	TXF-17002	38

Lower Cam Tracks



FILL CAM-OUTER 20MM FILL - EU D
K14-519 | OEM: N/A

Lower Cam Tracks



FILL CAM OUTER 20MM FILL - IPT D
K14-519/1 | OEM: N/A

Lower Cam Tracks



FILL CAM OUTER 20MM - IPT B
KI-582 | OEM: 10249582

Lower Cam Tracks



FILL CAM INNER 20MM FILL - EU D
K14-520 | OEM: N/A

Lower Cam Tracks



FILL CAM INNER 20MM FILL - IPT D
K14-520/1 | OEM: N/A

Lower Cam Tracks



FILL CAM INNER 20MM - IPT B
KI-583 | OEM: 10249583

Lower Cam Tracks



FILL CAM - IPT D
K14-517/1 | OEM: 130517/EUD

Lower Cam Tracks



FILL CAM IPT - B
KI-585 | OEM: 10249585

Lower Cam Tracks



EJECTION PLATE - NOTCHED
K14-309/3 | OEM: N/A

Lower Cam Tracks



TRANSITION CAM
KI-248 | OEM: N/A

Lower Cam Tracks



CATCH RAIL IPT B - EJECTION
KI-831 | OEM: 108831

Lower Cam Tracks



CATCH RAIL EU B - EJECTION
KI-831/1 | OEM: N/A

Lower Cam Tracks



CATCH RAIL IPT D - EJECTION
KI-847 | OEM: 108847

Lower Cam Tracks



CATCH RAIL EU D - EJECTION
KI-847/1 | OEM: N/A

Lower Cam Tracks



MOTOR PULLEY BEARING
KI-G203/1 | OEM: N/A

Lower Cam Tracks



FILL CAM - EU D
K14-517 | OEM: 130517/EUD

Lower Cam Tracks|Parts



PRE COMPRESSION CAM
KI-924 | OEM: 10110924

Pressure Rolls & Components



BEARING FOR ECCENTRIC ROLL PIN
KI-48 | OEM: 22214E

Pressure Rolls & Components



UPPER OR LOWER PRESSURE ROLL
KI-054 | OEM: 109054

Pressure Rolls & Components



PRE-COMPRESSION ROLL
KI-233 | OEM: 108233, 10108233

Turrets



21 STATION TURRET ASSEMBLY*
K14-21T | OEM: N/A
*See page 11

Turret Hardware



DIE LOCK SCREW
DL-15 | OEM: 108164

Turret Hardware



UNKEYED PUNCH GUIDE SEAL "D-TYPE"
KI-416 | OEM: 126416

Turret Hardware



KEYED PUNCH GUIDE SEAL - "D-TYPE"
KI-417 | OEM: N/A

Turret Hardware



UNKEYED PUNCH GUIDE SEAL "B-TYPE"
KI-418 | OEM: 126418

Turret Hardware



PUNCH GUIDE SEAL "B" - DOUBLE LIP
KI-418/1 | OEM: N/A

Turret Hardware



KEYED PUNCH GUIDE SEAL "B-TYPE"
KI-419 | OEM: 126419

Upper Cam Tracks

PHOTO NOT AVAILABLE

MAIN UPPER CAM TRACK - EU D
KI-406 | OEM: 137406

Upper Cam Tracks



PUSH DOWN RAIL
KI-448 | OEM: N/A

Pressure Rolls & Components

Product Control

Product Control

PHOTO NOT AVAILABLE

PRESSURE ROLLER
KI-236 | OEM: 10242236



FILL SHOE FIII FS ALUMINUM
KI-669 | OEM: 239669



SEALING SEGMENT
KI-804 | OEM: 231804

Product Control

Product Control

Product Control

PHOTO NOT AVAILABLE

FILL SHOE FII FS 316 SS
KI-086 | OEM: 239086

PHOTO NOT AVAILABLE

FILL SHOE FII FS ALUMINUM
KI-69 | OEM: 226369

PHOTO NOT AVAILABLE

FILL SHOE FIII FS 316 SS
KI-322 | OEM: 243322

Upper Cam Tracks

Upper Cam Tracks



UPPER SECTION CONTROL RAIL - IPT B
KI-696 | OEM: 250696



UPPER SECTION CONTROL CAM - IPT D
KI-697 | OEM: 250697

*Turret Assemblies come with Die Locks, Seals, Retainers with hardware, Die Driving Rod, Die Seat Cleaner, Die Insertion Ring, and Cleaning Brush

Pressure Rolls & Components



PRESSURE ROLLER
KI-611 | OEM: 211611

Pressure Rolls & Components

PHOTO NOT AVAILABLE

PRECOMPRESSION ROLLER
KI-247 | OEM: 10215247

Pressure Rolls & Components

PHOTO NOT AVAILABLE

PRESSURE ROLLER - EU B
KI-566 | OEM: 10233566

Product Control



SCRAPER
KI-93 | OEM: 213193



UPPER OR LOWER PRESSURE ROLL
KI-054 | OEM: 109054



DIE LOCK SCREW
DL-137 | OEM: 136137

Lower Cam Tracks



EJECTION CAM
KNR-1 | OEM: N/A

Lower Cam Tracks



WEAR PLATE
KNR-2 | OEM: N/A

Lower Cam Tracks



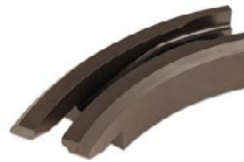
EJECTION RAMP
KNR-3 | OEM: N/A

Lower Cam Tracks



PIVOT PLATE
KNR-4 | OEM: N/A

Lower Cam Tracks



PULL DOWN CAM
KNR-715 | OEM: 7-15/39-14



FEEDER COVER FIIC-602
KI-091 | OEM: 108091/9



PUNCH GUIDE SEAL 30MM
KI-4M43 | OEM: N/A

Lower Cam Tracks



EJECTION PLATE - NOTCHED
K14-309/3 | OEM: N/A

Lower Cam Tracks



EJECTION PLATE
KI-308/3 | OEM: 107308/8

Lower Cam Tracks



FILL CAM - IPT D
K14-517/1 | OEM: N/A

Lower Cam Tracks

PHOTO NOT
AVAILABLE

FILL CAM 20MM IPT B
KI-77 | OEM: 10249577

Lower Cam Tracks



FILL CAM - IPT B
KI-585 | OEM: 10249585

Lower Cam Tracks



FILL CAM - EU D
K14-517 | OEM: 130517/EUD

Lower Cam Tracks



FILL CAM INNER 20MM FILL - EU D
K14-520 | OEM: N/A

Lower Cam Tracks



FILL CAM INNER 20MM FILL - IPT D
K14-520/1 | OEM: N/A

Lower Cam Tracks



FILL CAM INNER 20MM IPT-B
KI-583 | OEM: 10249583

Lower Cam Tracks



FILL CAM OUTER 20MM FILL - IPT D
K14-519/1 | OEM: N/A

Lower Cam Tracks



FILL CAM-OUTER 20MM FILL - EU D
K14-519 | OEM: N/A

Lower Cam Tracks



FILL CAM OUTER 20MM - IPT B
KI-582 | OEM: 10249582

Lower Cam Tracks



CATCH RAIL IPT B - EJECTION
KI-831 | OEM: 108831

Lower Cam Tracks



CATCH RAIL EU B - EJECTION
KI-831/1 | OEM: N/A

Lower Cam Tracks



CATCH RAIL IPT D - EJECTION
KI-847 | OEM: 108847

Lower Cam Tracks



CATCH RAIL EU "D" - EJECTION
KI-847/1 | OEM: N/A

Lower Cam Tracks



MOTOR PULLEY BEARING
KI-G203/1 | OEM: N/A

Lower Cam Tracks

PHOTO NOT AVAILABLE

EJECTION CAM GUIDE - EU D
K14-847 | OEM: 108847

Lower Cam Tracks



PRE COMPRESSION CAM
KI-924 | OEM: 10110924

Pressure Rolls & Components



UPPER OR LOWER PRESSURE ROLL
KI-054 | OEM: 109054

Pressure Rolls & Components



PRE-COMPRESSION ROLL
KI-233 | OEM: 108233, 10108233

Pressure Rolls & Components



BEARING FOR ECCENTRIC ROLL PIN
KI-48 | OEM: 22214E

Pressure Rolls & Components



LOWER ECCENTRIC ROLL PIN
KI-883 | OEM: 107883

Product Control



SCRAPER BLADE
KI-094 | OEM: 108094

Product Control



TAIL OVER DIE
KI-353 | OEM: 116353

Product Control



SCRAPER
KI-717 | OEM: 136717

Turret Hardware



DIE LOCK SCREW
DL-137 | OEM: 136137

Turret Hardware



DIE LOCK SCREW
DL-15 | OEM: 108164

Turret Hardware



BRAKE PIN
KI-048 | OEM: 108048

Turret Hardware



TILT LEVER
KI-301 | OEM: 108301

Turret Hardware



PUNCH GUIDE SEAL "D-TYPE"
KI-416 | OEM: 126416

Turret Hardware



PUNCH GUIDE SEAL - "D-TYPE"
KI-417 | OEM: N/A

Turret Hardware



PUNCH GUIDE SEAL "B-TYPE"
KI-418 | OEM: 126418

Turret Hardware



PUNCH GUIDE SEAL "B" - DOUBLE LIP
KI-418/1 | OEM: N/A

Turret Hardware



PUNCH GUIDE SEAL "B-TYPE"
KI-419 | OEM: 126419

Turret Hardware



TILT LEVER - BRAKE PIN
KI-940 | OEM: 107940

Turrets



16 STATION TURRET ASSEMBLY*
K14-16T | OEM: N/A

Turrets



26 STATION TURRET ASSEMBLY*
K14-26T | OEM: N/A

Turrets



21 STATION TURRET ASSEMBLY*
K14-21T | OEM: N/A

Upper Cam Tracks



PUSH DOWN RAIL
KI-448 | OEM: N/A

Upper Cam Tracks

PHOTO NOT AVAILABLE

LOW PRESSURE RAIL
KI-446 | OEM: 137446

Upper Cam Tracks

PHOTO NOT AVAILABLE

MAIN UPPER CAM TRACK - EU D
KI-406 | OEM: 137406

Upper Cam Tracks

PHOTO NOT AVAILABLE

MAIN UPPER PUNCH OVERLOAD FLIGHT
CAM - EU D
K14-448 | OEM: 137448

*Turret Assemblies come with Die Locks, Seals, Retainers with hardware, Die Driving Rod, Die Seat Cleaner, Die Insertion Ring, and Cleaning Brush

Lower Cam Tracks



INNER FILL CAM
KI-512 | OEM: 148261

Lower Cam Tracks



OUTER FILL CAM
KI-612 | OEM: 148263

Turret Hardware



DIE LOCK SCREW
DL-592 | OEM: 10111592

Turret Hardware



BRAKE PIN
KI-28 | OEM: N/A

Upper Cam Tracks



UPPER LOWERING ROOF CAM COMPLETE
KI-600 | OEM: N/A

Upper Cam Tracks



PULL DOWN CAM- INSERT
KI-600-1 | OEM: N/A

Upper Cam Tracks



LOWERING CAM
KI-188 | OEM: 171188

Lower Cam Tracks



LOWERING CAM SEGMENT
KI-164/2 | OEM: 171164

Lower Cam Tracks



FILL CAM 12.5MM-20MM - IPT D
KI-226 | OEM: 151226

Lower Cam Tracks



DOSING CAM
KI-229 | OEM: 108229

Lower Cam Tracks



FILL CAM 12MM - BRONZE
KI-323 | OEM: 108323

Lower Cam Tracks



FILL CAM 16 MM - BRONZE - IPT B
KI-324 | OEM: 108324

Lower Cam Tracks



FILL CAM 16 MM - STEEL
KI-324/1 | OEM: 108324

Lower Cam Tracks



CATCH RAIL
KI-343 | OEM: 108343

Lower Cam Tracks



CONTROL CAM
KI-348 | OEM: 108348

Lower Cam Tracks



EJECTION CAM
KI-459/6 | OEM: 108459/6

Lower Cam Tracks



TRANSITION PIECE - STEEL
KI-572 | OEM: 108572

Lower Cam Tracks



FILL CAM 20MM-BRONZE
KI-797 | OEM: 130797

Lower Cam Tracks



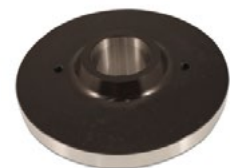
TRANSITION CAM
KI-11/KI-248 | OEM: C1-11

Pressure Rolls & Components



THRUST WASHER
KI-003 | OEM: RXC2-031, TXB2-003

Pressure Rolls & Components



PRESSURE ROLL
KI-225 | OEM: 108225

Pressure Rolls & Components



PRE-COMPRESSION ROLL
KI-233 | OEM: 108233, 10108233

Pressure Rolls & Components



LOWER ECCENTRIC PIN
KI-24 | OEM: 108224

Pressure Rolls & Components



MAIN PRESSURE ROLL
KI-705/1 | OEM: 125705

Pressure Rolls & Components

PHOTO NOT AVAILABLE

LOWER ROLL PIN BUSH
KI-588 | OEM: 144558

Product Control

PHOTO NOT AVAILABLE

BRONZE SEALING SEGMENT
KI-75 | OEM: 167775

Product Control

PHOTO NOT AVAILABLE

FILLSHOE
KI-774 | OEM: 167774

Product Control

PHOTO NOT AVAILABLE

SCRAPER RAIL
KI-503 | OEM: 108503

Product Control



SEAL SEGMENT FOR FILLING SHOE - PEEK
KI-75/P | OEM: N/A

Turret Hardware



INNER WEARING WASHER
KI-252 | OEM: 108252

Turret Hardware



TILT LEVER
KI-301 | OEM: 108301

Turret Hardware



BELLOWS RETAINER
KI-3510 | OEM: N/A

Turret Hardware

PHOTO NOT AVAILABLE

INNER BEARING BUSHING
KI-26 | OEM: 108226

Turret Hardware

PHOTO NOT AVAILABLE

OUTER BEARING BUSHING
KI-035 | OEM: 111035

Upper Cam Tracks



LOWERING CAM SEGMENT
KI-164/2 | OEM: 171164

Upper Cam Tracks



LOWERING CAM
KI-188 | OEM: 171188

Upper Cam Tracks



RAISING CAM
KI-875 | OEM: 169875/1

Lower Cam Tracks



STOP RAIL - IPT B
KI-009 | OEM: 119009

Lower Cam Tracks



FILL CAM 0.5-8MM - IPT B
KI-784 | OEM: 130784

Lower Cam Tracks



FILL CAM 4.5-12MM - IPT B
KI-785 | OEM: 130785

Lower Cam Tracks



FILL CAM 8.5-16MM - IPT B
KI-786 | OEM: 130786

Upper Cam Tracks



PUNCH ASCENDING SEGMENT - IPT B
K11-861 | OEM: 169861

Upper Cam Tracks



CAM TRACK SEGMENT - IPT B
K11-862 | OEM: 169862

Upper Cam Tracks



PUNCH DESCENDING SEGMENT - IPT B
K11-863 | OEM: 169863

Upper Cam Tracks

PHOTO NOT AVAILABLE

LOWERING CAM IPT
KI-174 | OEM: 167174

Lower Cam Tracks



CONTROL CAM - IPT D
KI-577 | OEM: 157577

Lower Cam Tracks

PHOTO NOT AVAILABLE

CATCH RAIL - IPT D
KI-576 | OEM: 157576

Lower Cam Tracks

PHOTO NOT AVAILABLE

SAFETY CAM - IPT D
KI-579 | OEM: 157579

Lower Cam Tracks



FILL CAM .5-8MM - IPT D
KI-682 | OEM: 157682

Lower Cam Tracks



FILL CAM 4.5-12MM - IPT D
KI-590 | OEM: 157590

Lower Cam Tracks



FILL CAM 8.5-16MM - IPT D
KI-685 | OEM: 157685

Upper Cam Tracks



PUNCH DESCENDING SEGMENT - IPT B
K11-863 | OEM: 169863

Lower Cam Tracks



DOSING CAM
KI-747 | OEM: 127747

Lower Cam Tracks



FILL CAM 20MM - IPT B
KI-962 | OEM: 10219962

Lower Cam Tracks



WEAR CAM
KI-975 | OEM: 10195975

Pressure Rolls & Components



MAIN PRESSURE ROLL
KI-705/1 | OEM: 125705

Product Control



PRE-COMPRESSION ROLLER
KI-120 | OEM: 195120

Product Control



GRAVITY FILL SHOE INSERT - WHITE NYLATRON
KI-183 | OEM: 206183

Product Control



SIGHT GLASS
KI-536 | OEM: 107536

Upper Cam Tracks



PUSH DOWN SEGMENT - IPT B
KI-331 | OEM: 221331/1

Upper Cam Tracks



UPPER RAISING CAM - IPT B
KI-567 | OEM: 219567-1

Lower Cam Tracks



FILL CAM SET 20MM - IPT D
KI-238 | OEM: 225238

Lower Cam Tracks



CATCH CAM - IPT B
KI-928/2 | OEM: N/A

Lower Cam Tracks



CATCH CAM - IPT D
KI-929/2 | OEM: 444929

Lower Cam Tracks

PHOTO NOT AVAILABLE

FILL CAM INNER HALF 20 MM - IPT D
KI-171 | OEM: 10221171

Lower Cam Tracks



CAM OUTER HALF 20MM -IPT D
KI-170 | OEM: 10221170

Lower Cam Tracks

PHOTO NOT AVAILABLE

EJECTION CAM
KI-919 | OEM: N/A

Pressure Rolls & Components



PRESSURE ROLLER
KI-611 | OEM: 211611

Product Control



SCRAPER
KI-894 | OEM: 226894

Turret Hardware



PUNCH SCRAPER SEAL-"B"
KI-193 | OEM: N/A

Upper Cam Tracks



CONTROL CAM - IPT B
KI-751 | OEM: 250751

Upper Cam Tracks



CONTROL CAM - IPT D
KI-752 | OEM: 250752

Pressure Rolls & Components



PRESSURE ROLL - NEW STYLE
KI-067 | OEM: 257067

Pressure Rolls & Components



PRESSURE ROLLER
KI-611 | OEM: 211611

Product Control



SEALING SEGMENT
KI-804 | OEM: 231804

KILIAN

SYN 700

Lower Cams

Pressure Roll

Product Control



EJECTION CAM
KI-388 | OEM: 180388



PRESSURE ROLLER
KI-956 | OEM: 10190956



FEEDER ASSEMBLY
KI-100/A | OEM: N/A

Pressure Rolls & Components



MAIN PRESSURE ROLL
KI-705/1 | OEM: 125705

Product Control



ADJUSTING SCREW
KI-529-2 | OEM: N/A

Lower Cam Tracks



FILL CAM 20MM - IPT B
KI-962 | OEM: 10219962

Lower Cam Tracks



FILL CAM 0.5-8MM - IPT B
KI-660 | OEM: 153660

Lower Cam Tracks



FILL CAM 4.5 - 12MM - IPT B
KI-661 | OEM: 153661

Lower Cam Tracks



FILL CAM 8.5 - 16MM - IPT B
KI-662 | OEM: 153662

Lower Cam Tracks



CATCH RAIL - IPT D
KI-6 | OEM: N/A

Lower Cam Tracks



CATCH RAIL - EU D
KI-210 | OEM: 157210

Lower Cam Tracks



CONTROL RAIL - EU D
KI-212 | OEM: 157212

Lower Cams

PHOTO NOT AVAILABLE

DRIVE RAIL
KI-726 | OEM: 127726

Product Control



HOPPER WINDOW
KI-01 | OEM: 189001

Product Control



PRE-COMPRESSION ROLLER
KI-120 | OEM: 195120

Product Control

PHOTO NOT AVAILABLE

BRONZE SEAL
KI-249 | OEM: 168249

Lower Cams



DOSING CAM
K4-214 | OEM: 140214

Lower Cams



CATCH CAM - IPT-B
KI-083 | OEM: 163083

Pressure Rolls & Components



PRESSURE ROLL BEARING
K15-C2200 | OEM: C2200, TXC2-200

Pressure Rolls & Components



PRESSURE ROLL
KI-286 | OEM: 183286

Pressure Rolls & Components



MAIN PRESSURE ROLLER
KI-705 | OEM: 125705

Pressure Rolls & Components



MAIN PRESSURE ROLL
KI-705/1 | OEM: 125705

Pressure Rolls & Components

PHOTO NOT AVAILABLE

COMPRESSION ROLLER (MINUS
HARDWARE)
K4-543 | OEM: N/A

Product Control



FEED FRAME INSERT
K4-167 | OEM: N/A

Turret Hardware



DIE LOCK SCREW
DL-15 | OEM: 108164

Turret Hardware



PUNCH GUIDE SEAL "D-TYPE"
KI-416 | OEM: 126416

Turret Hardware



PUNCH GUIDE SEAL "B-TYPE"
KI-418 | OEM: 126418

Turret Hardware



PUNCH GUIDE SEAL "B" - DOUBLE LIP
KI-418/1 | OEM: N/A

Turret Hardware



PUNCH GUIDE SEAL "B-TYPE"
KI-419 | OEM: 126419

Turrets



67 STATION TURRET ASSEMBLY*
K4-67T | OEM: N/A

Upper Cams



CONTROL CAM - IPT-B
KI-613 | OEM: 164613

*See page 31

Lower Cams

Lower Cams

Lower Cams



FILL CAM 8MM - IPT-B
KI-426 | OEM: 162426



FILL CAM 12MM - IPT-B
KI-427 | OEM: 162427



FILL CAM 16MM - IPT-B
KI-428 | OEM: 162428

*Turret Assemblies come with Die Locks, Seals, Retainers with hardware, Die Driving Rod, Die Seat Cleaner, Die Insertion Ring, and Cleaning Brush

Drive Components



DRIVE PULLEY BEARING
K15-G2200 | OEM: TXG2-200

Hydraulic & Components



OUTER STOP RING
K15-C2009 | OEM: TXC2-009

Hydraulic & Components



UPPER CAM CARRIER SEAL
K15-F001/1 | OEM: TXF-001/1

Hydraulic & Components



PRESSURE CYLINDER BUSHING
K15-H1001/2 | OEM: TXH1-001/2

Lower Cam Tracks



EXTENSION PIECE
K15-B1011 | OEM: TXB1-001

Lower Cam Tracks



LINK TRACK
K15-B1014 | OEM: TXB1-014

Lower Cam Tracks



INTERMEDIATE CAM
K15-B1016 | OEM: TXB1-016

Lower Cam Tracks



TRANSFER CAM
K15-B1017 | OEM: TXB1-017

Lower Cam Tracks



DOSING CAM CARRIER
K15-B6001 | OEM: TXB6-001

Lower Cam Tracks



DOSING CAM
K15-B6010 | OEM: TXB6-010

Lower Cam Tracks



DOSING CONTROL TRACK - IPT B
K15-F003 | OEM: TXF-003

Lower Cam Tracks



0.5 - 8MM FILL LOWER PULLDOWN CAM - EU B
K15-S21001/EU | OEM: TX-S21-001

Lower Cam Tracks



FILL CAM 12.5-20MM - LUBRICATED - IPT D
KI-007 | OEM: 158007

Lower Cam Tracks



FILL CAM 12.5MM - 20MM - EU B
KI-099 | OEM: 145099

Lower Cam Tracks



FILL CAM 12.5MM - 20MM - IPT B
KI-099-1 | OEM: N/A

Lower Cam Tracks



FILL CAM 8.5-16MM - EU D
KI-209/3 | OEM: 157209/3

Lower Cam Tracks



FILL CAM 4.5-12MM - IPT D LUBRICATED
KI-223 | OEM: 157223

Lower Cam Tracks



FILL CAM 8.5-16MM - IPT D LUBRICATED
KI-224 | OEM: 157224

Lower Cam Tracks



FILL CAM 0.5-8MM - IPT B LUBRICATED
KI-660 | OEM: 153660

Lower Cam Tracks



FILL CAM 4.5 - 12MM - IPT B LUBRICATED
KI-661 | OEM: 153661

Lower Cam Tracks



FILL CAM 8.5 16MM - IPT B LUBRICATED
KI-662 | OEM: 153662

Lower Cam Tracks



FILL CAM 4.5-12MM - IPT B
KI-712 | OEM: 130712

Lower Cam Tracks



FILL CAM 8.5MM - 16MM - IPT B
KI-713 | OEM: 130713

Lower Cam Tracks



FILL CAM 4.5MM - 12MM - EU D
KI-716 | OEM: 130716

Lower Cam Tracks



DOSING CAM SAFETY RAIL US "B" TOOLING
KI-830 | OEM: 108830

Lower Cam Tracks



CATCH RAIL IPT "B" - EJECTION
KI-831 | OEM: 108831

Lower Cam Tracks



CATCH RAIL EU "B" - EJECTION
KI-831/1 | OEM: N/A

Lower Cam Tracks



CATCH RAIL IPT "D" - EJECTION
KI-847 | OEM: 108847

Lower Cam Tracks



CATCH RAIL EU "D" - EJECTION
KI-847/1 | OEM: N/A

Lower Cam Tracks



EJECTION CAM "B"
KI-931 | OEM: 108931

Lower Cam Tracks



FILL CAM .5-8MM - IPT D LUBRICATED
KI-221 | OEM: 157221

Lower Cam Tracks



EJECTION CAM - "B" - STEEL
KI-931/S | OEM: 108931

Pressure Rolls & Components



LOWER PRECOMPRESSION PIN
K15-B5002 | OEM: TXB5-002

Pressure Rolls & Components



LOWER PRECOMP CYLINDER SEAL
K15-B5202 | OEM: TXB5-202

Pressure Rolls & Components



PRECOMPRESSION ROLL BEARING
K15-B5203 | OEM: TXB5-203

Pressure Rolls & Components



UPPER YOKE SPINDLE BEARING
K15-C1200 | OEM: TXC1-200

Pressure Rolls & Components



NEEDLE BEARING FOR UPPER ROLL PIN
K15-C1202 | OEM: TXC1-202

Pressure Rolls & Components



NEEDLE BEARING
K15-C1203 | OEM: TXC1-203

Pressure Rolls & Components



THRUST BEARING WASHER
K15-C2007 | OEM: TXC2-007

Pressure Rolls & Components



PRESSURE ROLL BEARING
K15-C2200 | OEM: C2200, TXC2-200

Pressure Rolls & Components



THRUST BEARING
K15-C2208 | OEM: TXC2-208

Pressure Rolls & Components



UPPER PRE-COMP ROLL PIN BEARING
K15-C5212 | OEM: TXC5-212

Pressure Rolls & Components



UPPER PRE COMP ROLL PIN NEEDLE BEARING
K15-C5213 | OEM: TXC5-213

Pressure Rolls & Components



UPPER PRE COMP ROLL PIN SEAL
K15-C5215 | OEM: TXC5-215

Pressure Rolls & Components



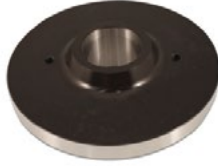
UPPER PRECOMPRESSION ROLL SEAL
K15-C5216 | OEM: TXC5-216

Pressure Rolls & Components



THRUST WASHER
KI-003 | OEM: RXC2-031, TXB2-003

Pressure Rolls & Components



PRESSURE ROLL SEE KI-705/1
KI-225 | OEM: 108225

Pressure Rolls & Components



PRE-COMPRESSION ROLL
KI-233 | OEM: 108233, 10108233

Pressure Rolls & Components



ECCENTRIC PIN - UPPER PRECOMP - EARLY MODEL
KI-369 | OEM: N/A

Pressure Rolls & Components



ECCENTRIC PIN - UPPER PRECOMP - LATE MODEL (HEX)
KI-369/1 | OEM: 144369

Pressure Rolls & Components



UPPER ECCENTRIC ROLL PIN
K15-B2002 | OEM: TXB2-002

Pressure Rolls & Components



MAIN PRESSURE ROLL
KI-705/1 | OEM: 125705

Pressure Rolls & Components

PHOTO NOT AVAILABLE

UPPER ECCENTRIC ROLL PIN
K15-C2002 | OEM: TXC2-002

Pressure Rolls & Components

PHOTO NOT AVAILABLE

LOWER ROLL PIN BUSH
KI-588 | OEM: 144558

Product Control



TABLET STRIPPER (TAKEOFF)
K15-B1001 | OEM: 148169/1

Product Control



COVERINA SEGMENT (TAIL OVER DIE)
FROM SERIES 32014
K15-C440 | OEM: TXFIC-440

Product Control



SCRAPER
K15-C442 | OEM: TXFIC-442

Product Control



TABLET CHUTE
KI-184 | OEM: 158184

Product Control



PUNCH GUIDE SEAL "B" - DOUBLE LIP
KI-418/1 | OEM: N/A

Product Control



FILL SHOE
KI-C001 | OEM: TX FIC-001

Product Control



FEEDER PAN COVER
KI-C002 | OEM: TX FIIC-002

Product Control



LOWER GEAR HOUSING
KI-C003 | OEM: TX FIIC-003

Product Control



UPPER GEAR HOUSING
KI-C004 | OEM: TX FIIC-004

Product Control



SCRAPER RAIL - SERIES32010
KI-C009 | OEM: TXFIIC-009

Product Control



DRIVE SHAFT - LONG
KI-C020 | OEM: TXFIIC-020

Product Control



DRIVE SHAFT - SHORT
KI-C021 | OEM: TXFIIC-021

Product Control



FEEDER GEAR
KI-C023 | OEM: TX-FIIC-023

Product Control



VERTICAL SHAFT
KI-C024 | OEM: TXFIIC-024

Product Control



FEEDER GEAR
KI-C025 | OEM: TX-FIIC-025

Product Control



COUPLING BOX
KI-C027 | OEM: TXFIIC-027

Product Control



LOWER ADJUSTER
KI-C028 | OEM: TXFIIC-028

Product Control



LEVEL ADJUSTER
KI-C029 | OEM: TXFIIC-029

Product Control



BEARING HOUSING
KI-C030 | OEM: TXFIIC-030

Product Control



LARGE AGITATOR
KI-C051 | OEM: 154232

Product Control



SMALL AGITATOR
KI-C052 | OEM: 154234

Product Control



SEALING RING FOR FEEDER DRIVE SHAFT
KI-C070 | OEM: N/A

Product Control



FILL SHOE BEARING
KI-C071 | OEM: TX-FIIC-071

Product Control



BUSHING
KI-C076 | OEM: TXFIIC-076

Product Control



MOTOR PULLEY BEARING
KI-G203/1 | OEM: N/A

Product Control



TILT LEVER AT LOWER PUNCH BODY
KI-NRDD81 | OEM: NRD-D81

Product Control



SEAL FOR BEARING HOUSING
KI-C030/1 | OEM: TXFIIC-030

Turret Hardware



DIE LOCK SCREW
DL-109 | OEM: 102109

Turret Hardware



DIE LOCK SCREW
DL-115 | OEM: 102115

Turret Hardware



DIE LOCK SCREW
DL-137 | OEM: 136137

Turret Hardware



DIE LOCK SCREW
DL-15 | OEM: 108164

Turret Hardware



SPRING FOR BRAKE LEVER PIN
KI-051 | OEM: 15030051

Turret Hardware



PUNCH BUSHING
KI-129 | OEM: N/A

Turret Hardware



BRAKE PIN AT LOWER PUNCH BODY
KI-293 | OEM: 108293

Turret Hardware



BRAKE PIN - VIVIDUR PVC - U - GREY
KI-293-P | OEM: 108293

Turret Hardware



TILT LEVER
KI-301 | OEM: 108301

Turret Hardware



PUNCH GUIDE SEAL "D-TYPE" (UNKEYED)
KI-416 | OEM: 126416

Turret Hardware



PUNCH GUIDE SEAL "B-TYPE"
KI-418 | OEM: 126418

Turret Hardware



PUNCH GUIDE SEAL "B-TYPE"
KI-419 | OEM: 126419

Turret Hardware



TILT LEVER AT LOWER PUNCH BODY
KI-623 | OEM: 110623

Turret Hardware



MAIN SPINDLE
KI-888 | OEM: 108888

Turrets



21 STATION TURRET ASSEMBLY*
K15-21T | OEM: N/A

Turrets



26 STATION TURRET ASSEMBLY*
K15-26T | OEM: N/A

Turrets



32 STATION TURRET ASSEMBLY*
K15-32T | OEM: N/A

Turrets



40 STATION TURRET ASSEMBLY*
K15-40T | OEM: N/A

Upper Cam Tracks



UPPER CAM TRACK - BRONZE - IPT B
K15-F17002 | OEM: TXF-17002

*Turret Assemblies come with Die Locks, Seals, Retainers with hardware, Die Driving Rod, Die Seat Cleaner, Die Insertion Ring, and Cleaning Brush

Get Our Latest Accessories Catalog



The industry's most comprehensive accessories catalog.

Our 6th edition catalog features everything you need to clean, polish, maintain, store and analyze your equipment to prolong tool life, support your investment and increase productivity.

Printed, digital and interactive online catalogs are available at no charge at natoli.com.





natoli.com

Natoli Engineering Company, Inc.

28 Research Park Circle, St. Charles, MO 63304 • 636.926.8900 • info@natoli.com